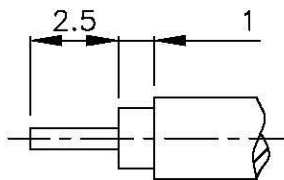
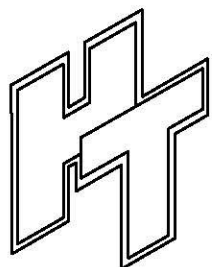
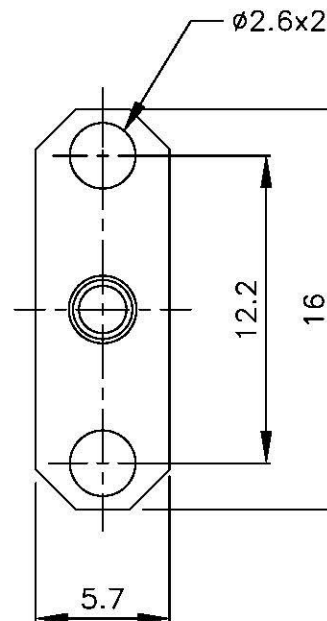
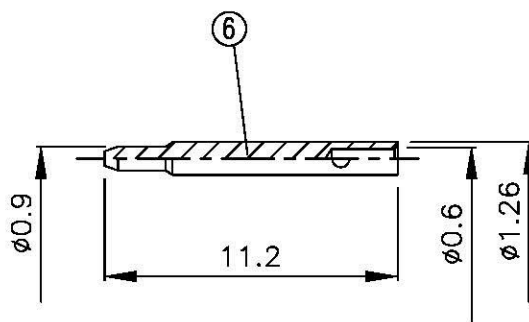
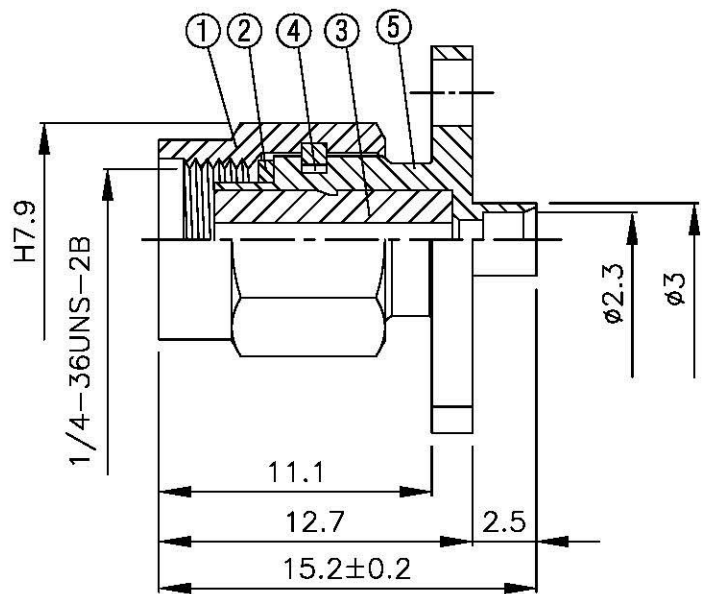
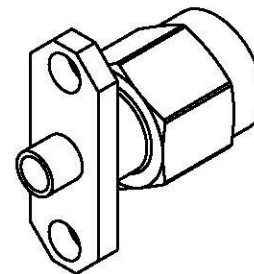


NO	DESCRIPTION	MATERIAL	Q'TY	FINISH	REMARK
1	SHELL	BRASS	1	GOLD	B-SMA0043-G
2	GASKET	SI RUBBER	1	RUBBER	RU-0008
3	INSULATION	TEFLON	1	TEFLON	I-0235T
4	WASHER	PH.BRONZE	1	GOLD	W-0012
5	BODY	BRASS	1	GOLD	B-SMA0105-G
6	PIN	BRASS	1	GOLD	P-SMA0059-G



(Recommended Stripping Dimension)



**All Connectors**

www.allconnectors.de  
 info@allconnectors.de  
 Tel: 0349 711 709503  
 70794 Filzschnee, Germany  
 Fax: 0349 711 709504  
 kett@vtr.zf

TITLE SMA MALE PANEL SOLDER FOR  
 RG 405/U (.085)

PART NO. SMA-06V1-TGG

DRAWING NO. SMA 06V1 TGG

DRAWN MARY DATE 96.03.15

CHECKED 黄巧君 DATE

Q.A. 蘇姿潔 DATE

APPROVAL 徐燦霖 DATE

REVISION DATE

DIMENSIONS ARE IN MILLIMETERS

UNLESS OTHERWISE SPECIFIED  
 TOLERANCE  
 0.5-5=±0.2 120-315=±1  
 5-30=±0.4 315-1000=±1.6  
 30-120±0.6 1000-2000=±2.4

SCALE 4:1 SIZE A

REVISION

REVISION	DESCRIPTION	ENGINEER