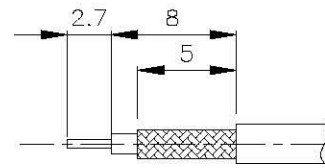
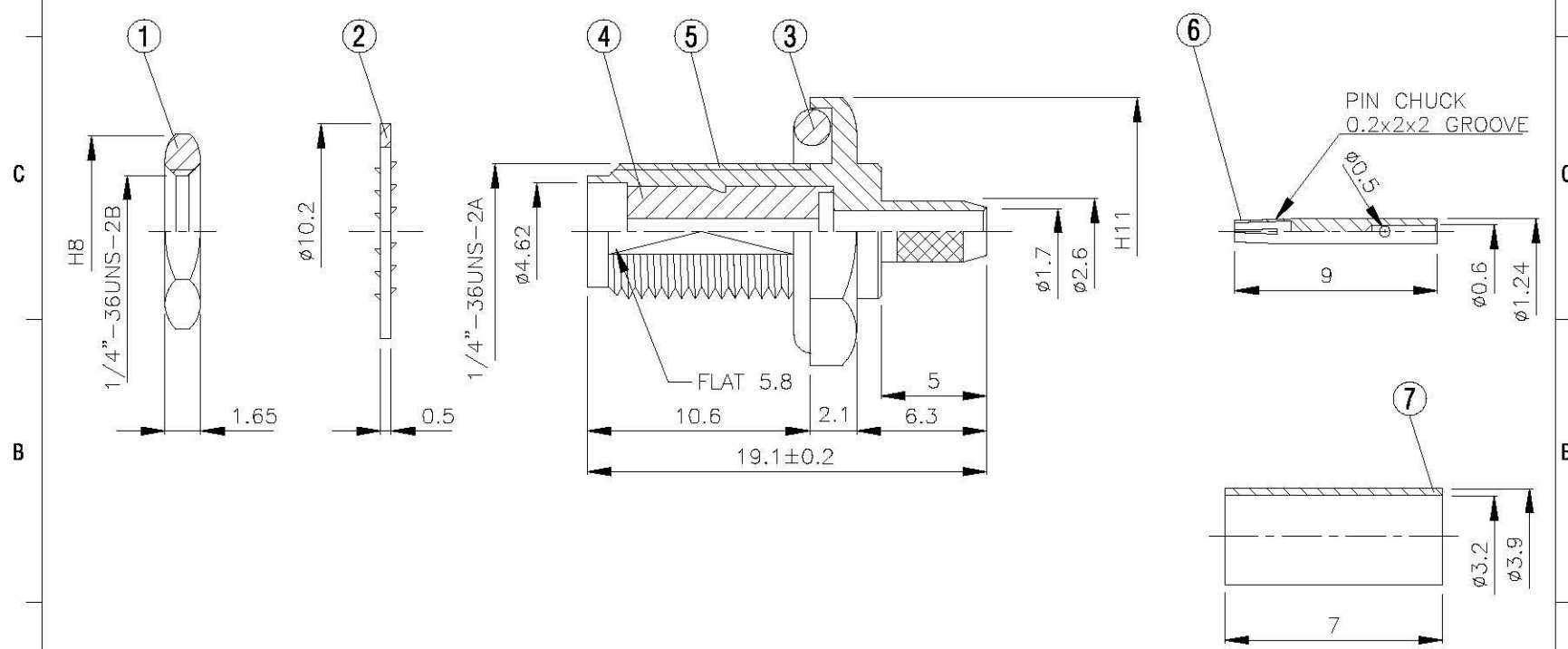
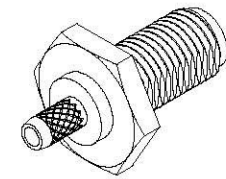
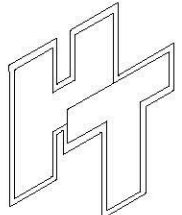


NO	DESCRIPTION	MATERIAL	Q'TY	FINISH	REMARK
1	NUT	BRASS	1	NICKEL	N-0006
2	WASHER	BRASS	1	NICKEL	W-0016
3	GASKET	SI RUBBER	1	RUBBER	RU-0014
4	INSULATION	TEFLON	1	TEFLON	I-0131T
5	BODY	BRASS	1	NICKEL	B-SMA0090-N
6	PIN	BE CU	1	GOLD	P-SMA0056-G
7	RING	BRASS	NICKEL	R-0002	



(Recommended Stripping Dimension)



	<b>All Connectors</b> <small>www.allconnectors.com    info@allconnectors.de</small> <small>Kellernstr. 25, 70734 Stuttgart, Germany    Kellernstr. 25</small>	DRAWN <b>MARY</b> DATE <b>90.01.22</b> CHECKED <b>蘇志欣</b> DATE <b>97.07.08</b> Q.A. <b>蘇姿潔</b> DATE APPROVAL <b>徐慶霖</b> DATE REVISION    DATE	<b>DIMENSIONS ARE IN MILLIMETERS</b> <b>UNLESS OTHERWISE SPECIFIED TOLERANCE</b> 0.5-5=±0.2    120-315=±1 5-30=±0.4    315-1000=±1.6 30-120=±0.6    1000-2000=±2.4	<b>REVISION</b> DESCRIPTION    ENGINEER
	<b>TITLE</b> SMA FEMALE CRIMP FOR RG-316/U	SCALE    4:1    SIZE    A		
	<b>PART NO.</b> SMA-05LV1-TGN			
	<b>DRAWING NO.</b> SMA 05LV1 TGN			