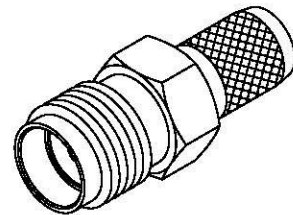
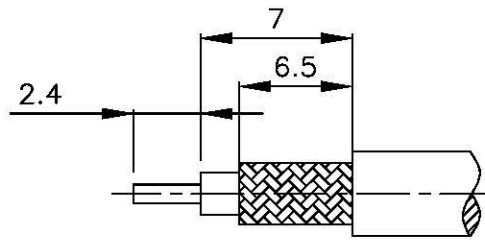
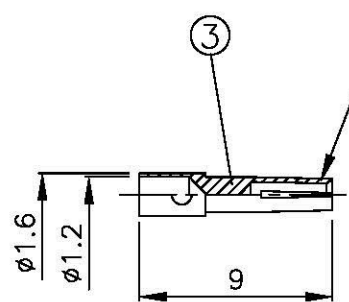
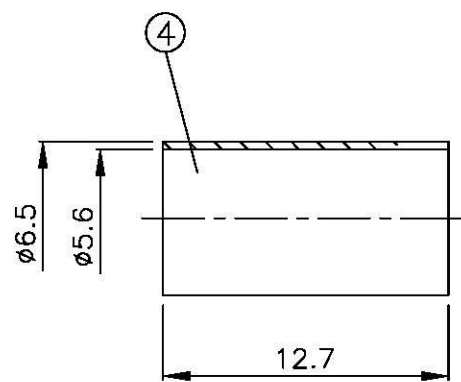


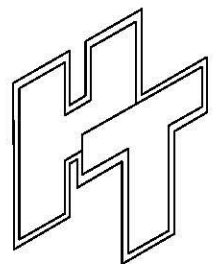
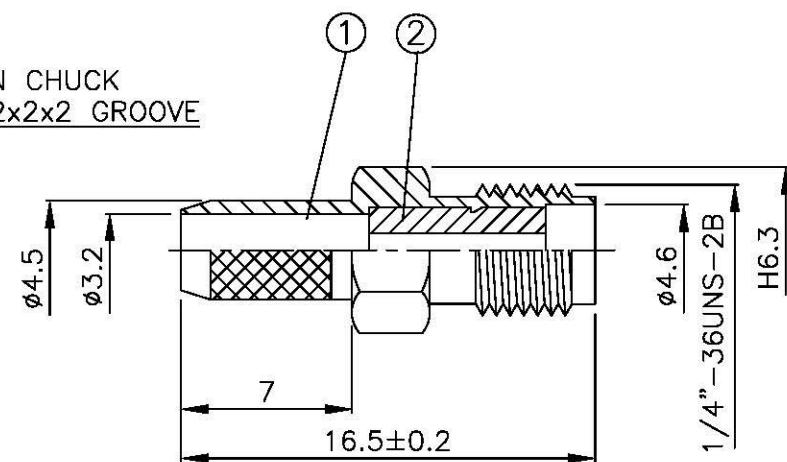
NO	DESCRIPTION	MATERIAL	Q'TY	FINISH	REMARK
1	BODY	BRASS	1	GOLD	B-SMA0061-G
2	INSULATION	TEFLON	1	TEFLON	I-0547T
3	PIN	Be Cu	1	GOLD	P-SMA0288-G
4	RING	BRASS	1	GOLD	R-0007-N



(Recommended Stripping Dimension)



PIN CHUCK
0.2x2x2 GROOVE



All Connectors
www.allconnectors.de
Innovative connectors.de
TELE: 0049 711 7009501
70724 Eilderstadt - Germany
FAX: 0049 711 7009504
Kontaktform. 25

TITLE SMA FEMALE CRIMP FOR LMR-200

PART NO. SMA-04S1-TGG

DRAWING NO. SMA 04S1 TGG

DRAWN	MARY	DATE	94.12.12
CHECKED	沈佳博	DATE	94.12.12
Q.A.	蘇姿潔	DATE	
APPROVAL	徐燦霖	DATE	
REVISION		DATE	

DIMENSIONS ARE IN MILLIMETERS			
UNLESS OTHERWISE SPECIFIED TOLERANCES			
0.5-5=±0.2	120-315=±1		
5-30=±0.4	315-1000=±1.6		
30-120=±0.6	1000-2000=±2.4		
SCALE	4:1	SIZE	A

REVISION	
DESCRIPTION	ENGINEER