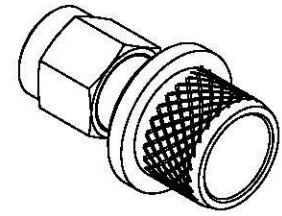
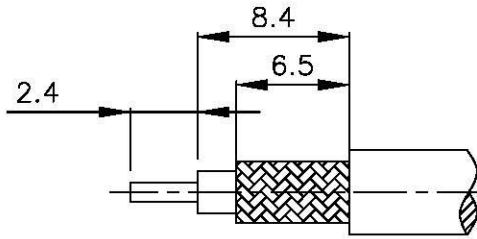


| NO | DESCRIPTION | MATERIAL | Q'TY | FINISH | REMARK |
|----|-------------|-----------|------|--------|-------------|
| 1 | SHELL | BRASS | 1 | NICKEL | B-SMA0043-N |
| 2 | GASKET | SI RUBBER | 1 | RUBBER | RU-0008 |
| 3 | WASHER | BRASS | 1 | NICKEL | W-0012 |
| 4 | INSULATION | TEFLON | 1 | TEFLON | I-0115T |
| 5 | BODY | BRASS | 1 | NICKEL | B-SMA1036-N |
| 6 | PIN | BRASS | 1 | GOLD | P-SMA0717-G |
| 7 | RING | BRASS | 1 | NICKEL | R-0010-N |



D

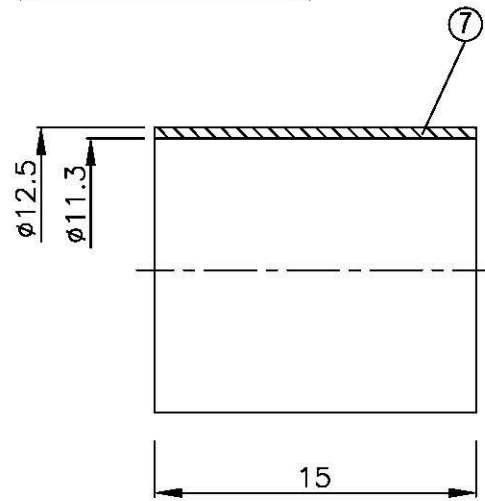
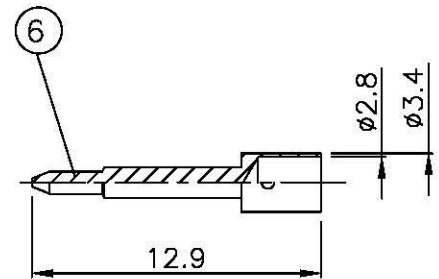
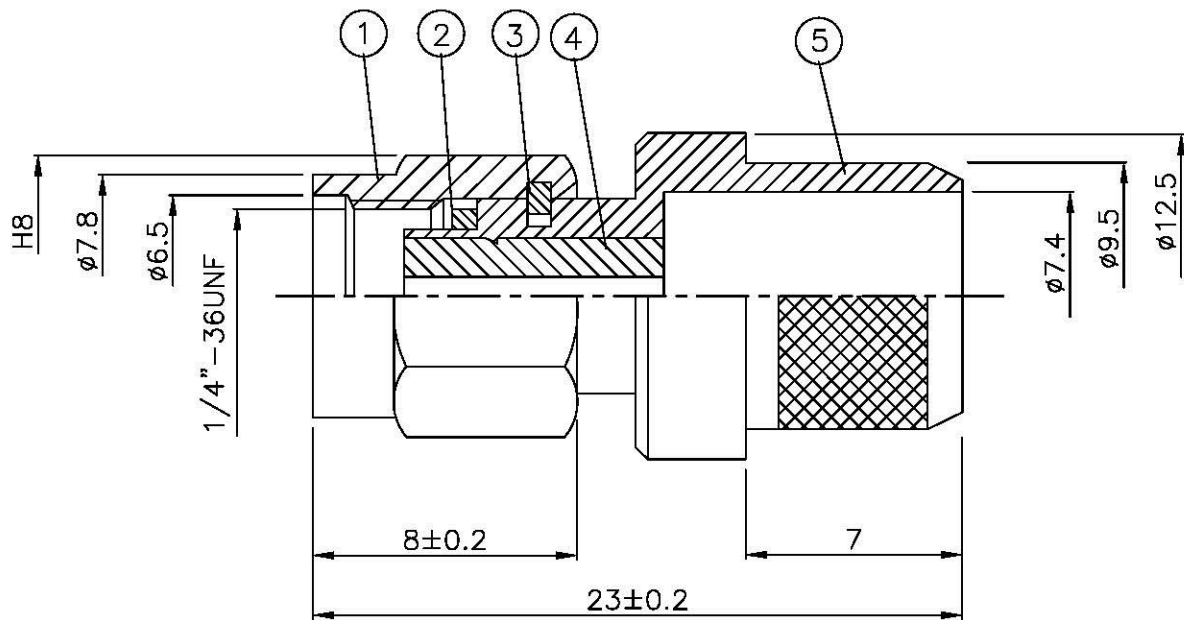
D

C

C

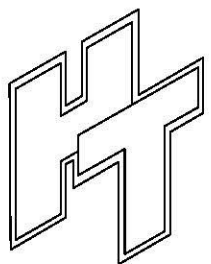
B

B



A

A



Allconnectors
 info@allconnectors.de
 Tel.: 0049 711 3004304
 70724ilderstadt - Germany
 info@allconnectors.de
 Fax: 0049 711 3004305
 Ketteimerstr. 25

TITLE SMA MALE CRIMP FOR LMR-400
PART NO. SMA-03S-TGN
DRAWING NO. SMA-03S-TGN

DRAWN MARY
CHECKED 蘇志欣
Q.A. 蘇姿潔
APPROVAL 徐燦霖
REVISION

DATE 96.06.21
DATE
DATE
DATE

DIMENSIONS ARE IN MILLIMETERS
UNLESS OTHERWISE SPECIFIED TOLERANCES
 0.5-5=±0.2 120-315=±1
 5-30=±0.4 315-1000=±1.6
 30-120=±0.6 1000-2000=±2.4

SCALE 4:1 **SIZE** A

| REVISION | |
|-------------|----------|
| DESCRIPTION | ENGINEER |
| | |
| | |
| | |

4

3

2

1