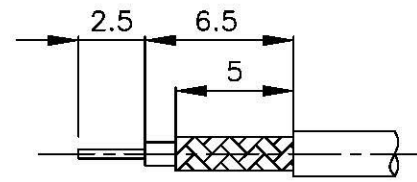
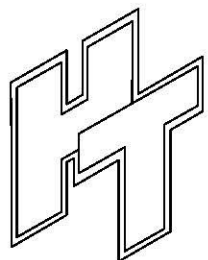
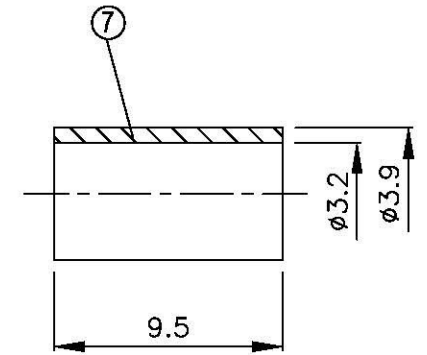
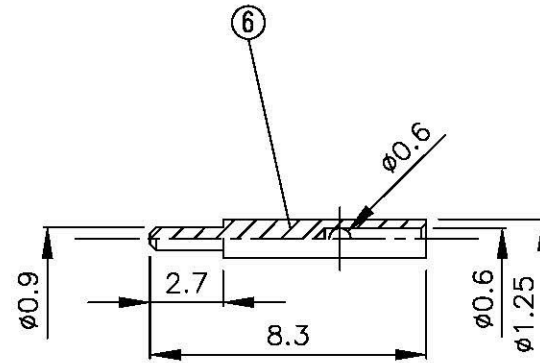
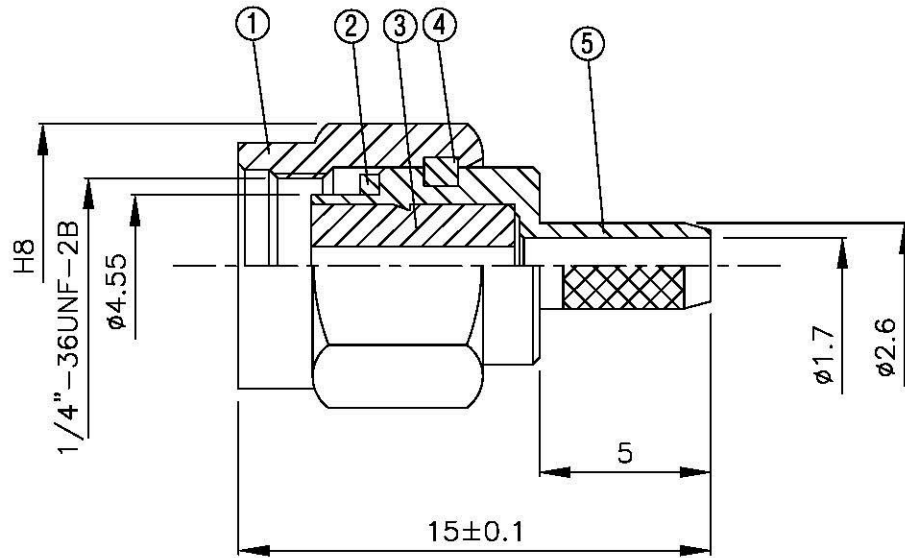
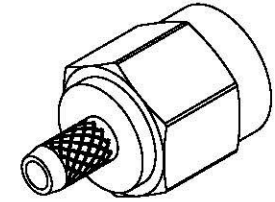


NO	DESCRIPTION	MATERIAL	Q'TY	FINISH	REMARK
1	SHELL	BRASS	1	GOLD	B-SMA0043-G
2	GASKET	SI RUBBER	1	RUBBER	RU-0008
3	INSULATION	TEFLON	1	TEFLON	I-0115T
4	WASHER	PH.BRONZE	1	GOLD	W-0012
5	BODY	BRASS	1	GOLD	B-SMA0045-G
6	PIN	BRASS	1	GOLD	P-SMA0040-G
7	RING	BRASS	1	GOLD	R-0002-G



(Recommended Stripping Dimension)



**All Connectors**

www.allconnectors.de  
Tel.: 0049 711 7009300  
All Connectors - Germany

info@allconnectors.de  
Fax: 0049 711 7009304  
Rolfmannstr. 25

TITLE SMA MALE CRIMP FOR  
RG174U, RG316U

PART NO. SMA-03LV1-TGG

DRAWING NO. SMA-03LV1-TGG

DRAWN MARY DATE 96.03.15

CHECKED 蘇志欣 DATE 97.05.20

Q.A. 蘇姿潔 DATE

APPROVAL 徐燦霖 DATE

REVISION DATE

DIMENSIONS ARE IN MILLIMETERS

UNLESS OTHERWISE SPECIFIED  
TOLERANCE

0.5-5=±0.2 120-315=±1

5-30=±0.4 315-1000=±1.6

30-120±0.6 1000-2000=±2.4

SCALE 4:1 SIZE A

REVISION

DESCRIPTION	ENGINEER

D

C

B

A

D

C

B

A