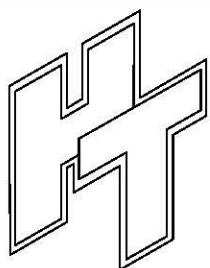
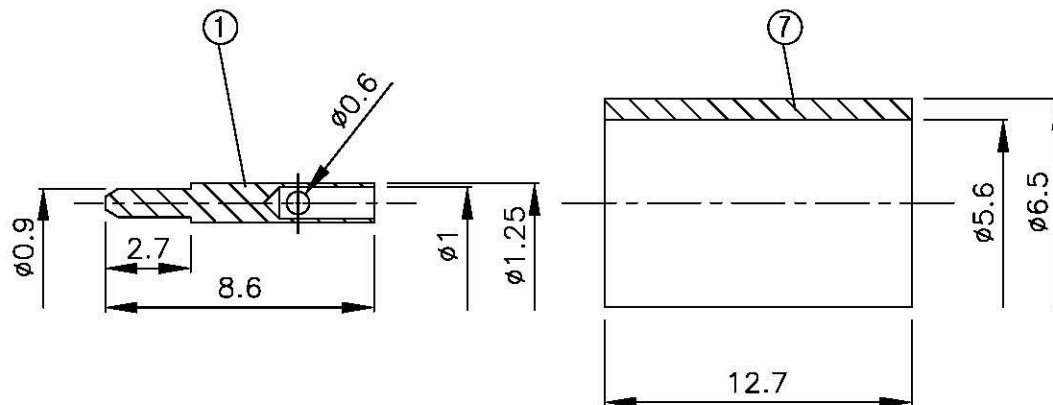
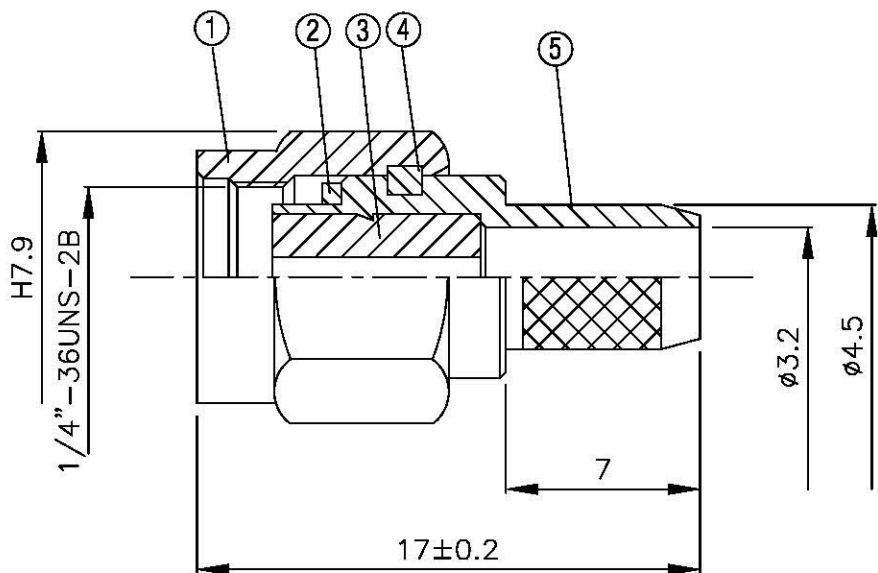
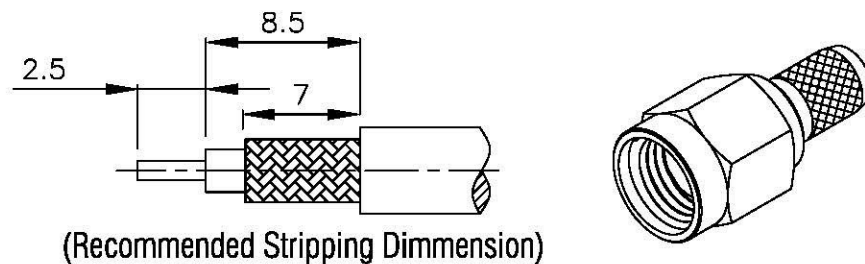


| NO | DESCRIPTION | MATERIAL  | Q'TY | FINISH | REMARK      |
|----|-------------|-----------|------|--------|-------------|
| 1  | SHELL       | BRASS     | 1    | GOLD   | B-SMA0043-G |
| 2  | GASKET      | SI RUBBER | 1    | RUBBER | RU-0008     |
| 3  | INSULATION  | TEFLON    | 1    | TEFLON | I-0115T     |
| 4  | WASHER      | PH.BRONZE | 1    | GOLD   | W-0012      |
| 5  | BODY        | BRASS     | 1    | GOLD   | B-SMA0046-G |
| 6  | PIN         | BRASS     | 1    | GOLD   | P-SMA0037-G |
| 7  | RING        | BRASS     | 1    | GOLD   | R-0007-G    |



**All Connectors**

www.allconnectors.de  
Tel.: 0049 711 7009203  
70728 Talheimstadt - Germany

info@allconnectors.de  
Fax: 0049 711 7009204  
Kellernstr. 2b

TITLE SMA MALE CRIMP  
FOR RG58U,141AU

PART NO. SMA-03F-TGG

DRAWING NO. SMA-03F-TGG

DRAWN MARY DATE 96.03.19

CHECKED 沈佳憶 DATE

Q.A. 蘇姿潔 DATE

APPROVAL 徐燦霖 DATE

REVISION DATE

DIMENSIONS ARE IN MILLIMETERS

UNLESS OTHERWISE SPECIFIED  
TOLERANCE

0.5-5=±0.2 120-315=±1

5-30=±0.4 315-1000=±1.6

30-120±0.6 1000-2000=±2.4

SCALE 4:1 SIZE A

REVISION

DESCRIPTION ENGINEER