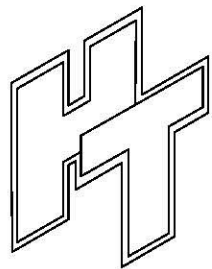
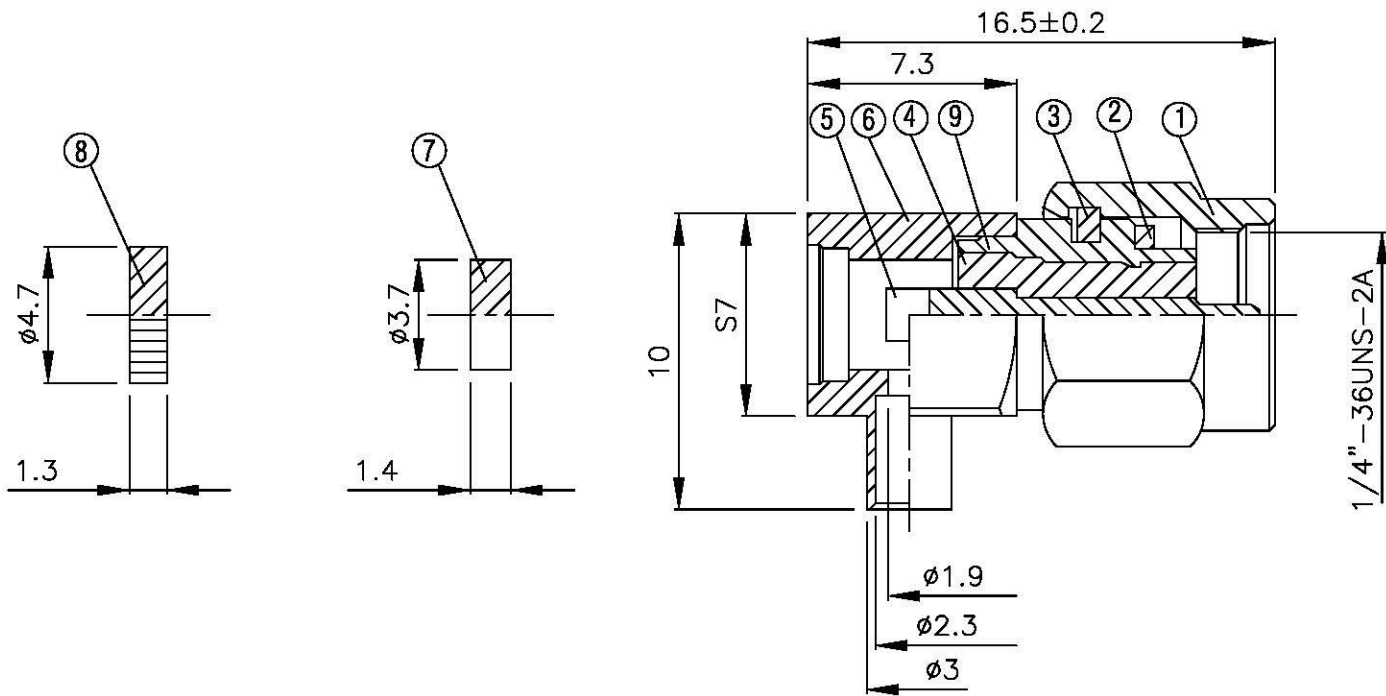
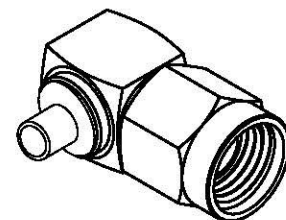
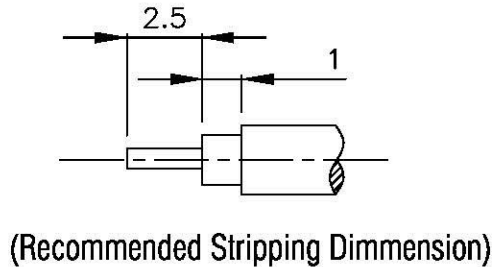


NO	DESCRIPTION	MATERIAL	Q'TY	FINISH	REMARK
1	SHELL	BRASS	1	GOLD	B-SMA0043-G
2	GASKET	SI RUBBER	1	GOLD	RU-0008
3	WASHER	PH.BRONZE	1	GOLD	W-0012-G
4	INSULATION	TEFLON	1	TEFLON	I-0138T
5	PIN	BE CU	1	GOLD	P-SMA0065-G
6	BODY	BRASS	1	GOLD	B-SMB0253-G
7	INSULATION	TEFLON	1	TEFLON	I-0136T
8	WASHER	BRASS	1	GOLD	W-0023-G
9	BODY	BRASS	1	GOLD	B-SMA0154-G



All Connectors
 www.allconnectors.de
 in for allconnectors.de
 tel.: 0049 (0) 21 2003002
 20794 F3 Elmstedt • Germany
 f. no: 0049 (0) 21 2003001
 f. no: 0049 (0) 21 2003001
 f. no: 0049 (0) 21 2003001

TITLE: SMA MALE SLIDER FOR RG 405 (.085)
 PART NO.: SMA-02V1-TGG
 DRAWING NO.: SMA-02V1-TGG

DRAWN: MARY
 CHECKED: 黄巧君
 Q.A.: 蘇姿潔
 APPROVAL: 徐燦霖
 REVISION: _____
 DATE: 96.03.27
 DATE: 96.03.27
 DATE: _____
 DATE: _____

DIMENSIONS ARE IN MILLIMETERS
 UNLESS OTHERWISE SPECIFIED TOLERANCE
 0.5-5=±0.2 120-315=±1
 5-30=±0.4 315-1000=±1.6
 30-120±0.6 1000-2000=±2.4
 SCALE: 4:1 SIZE: A

REVISION	
DESCRIPTION	ENGINEER