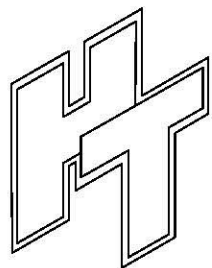
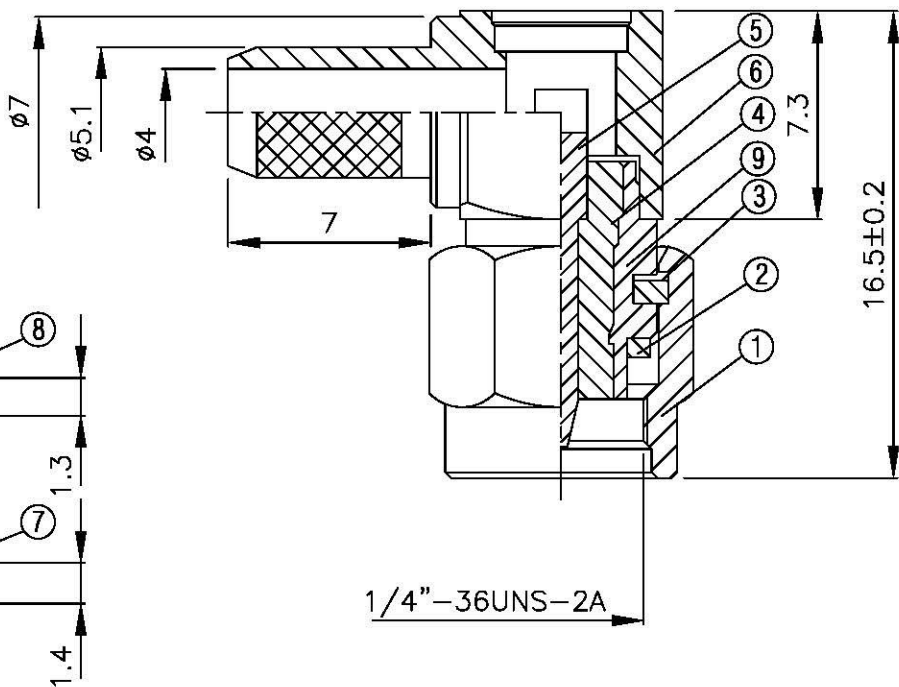
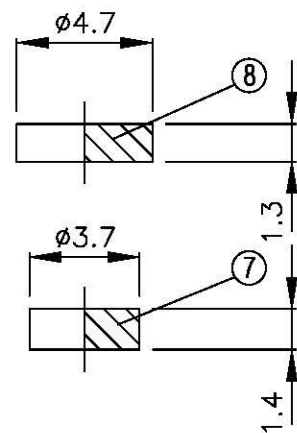
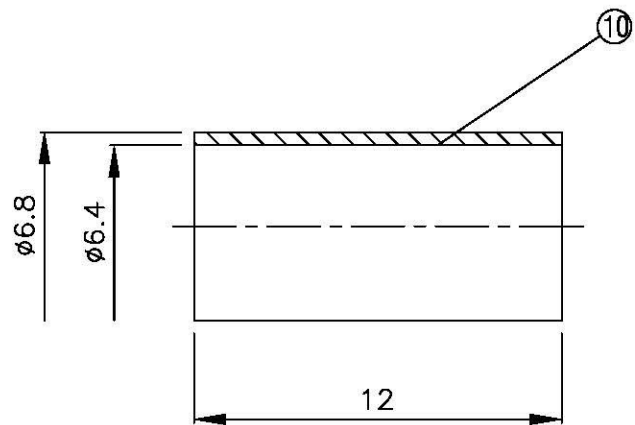
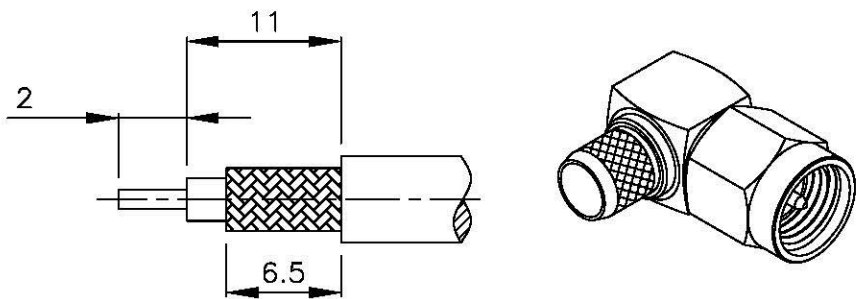


NO	DESCRIPTION	MATERIAL	Q'TY	FINISH	REMARK
1	SHELL	BRASS	1	NICKEL	B-SMA0043-N
2	GASKET	SI RUBBER	1	RUBBER	RU-0008
3	WASHER	PH.BRONZE	1	NICKEL	W-0012
4	INSULATION	TEFLON	1	TEFLON	I-0138T
5	PIN	BE CU	1	GOLD	P-SMA0718-G
6	BODY	BRASS	1	NICKEL	B-SMA0808-N
7	INSULATION	TEFLON	1	TEFLON	I-0136T
8	WASHER	BRASS	1	NICKEL	W-0023-N
9	BODY	BRASS	1	NICKEL	B-SMA0154-N
10	RING	BRASS	1	NICKEL	R-0064-N



**All Connectors**  
 www.allconnectors.com  
 Tel: 0049 711 7099709 Fax: 0049 711 7099704  
 70754 Rillwipstadt, Germany Kettenvorstr. 25

TITLE SMA MALE ANGLE CRIMP  
 FOR LMR-240

PART NO. SMA-02R-TGN

DRAWING NO. SMA-02R-TGN

DRAWN	MARY	DATE	94.12.10
CHECKED	沈佳憶	DATE	94.12.10
Q.A.	蘇姿潔	DATE	
APPROVAL	徐燦霖	DATE	
REVISION		DATE	

DIMENSIONS ARE IN MILLIMETERS			
UNLESS OTHERWISE SPECIFIED TOLERANCE			
0.5-5=±0.2	120-315=±1		
5-30=±0.4	315-1000=±1.6		
30-120±0.6	1000-2000=±2.4		
SCALE	4:1	SIZE	A

REVISION	
DESCRIPTION	ENGINEER