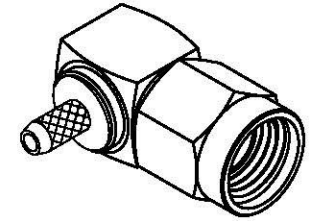
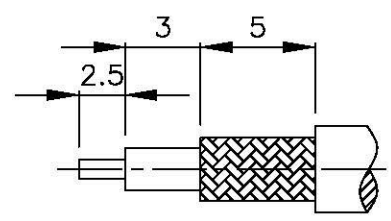
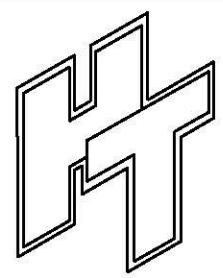
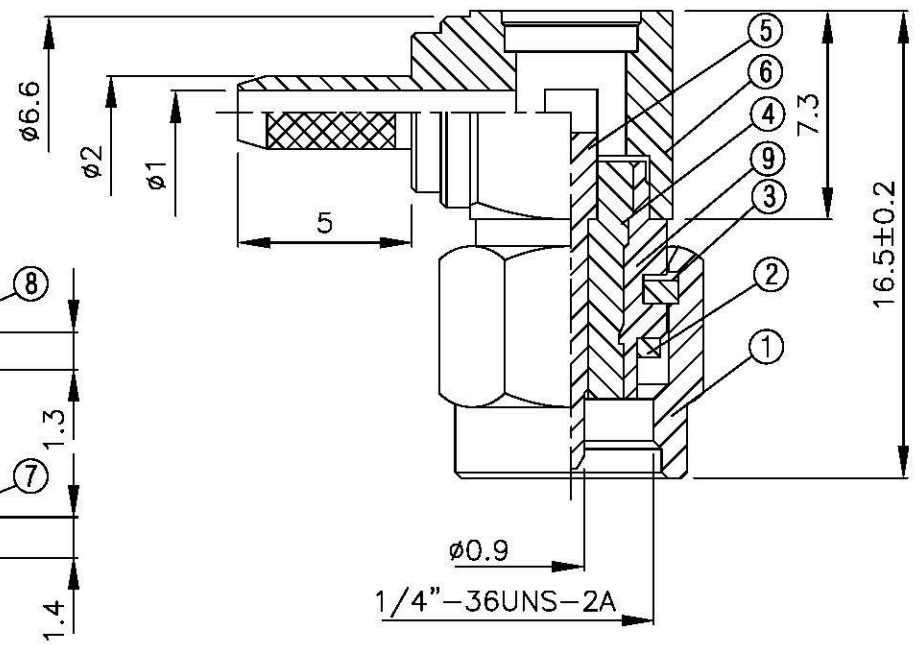
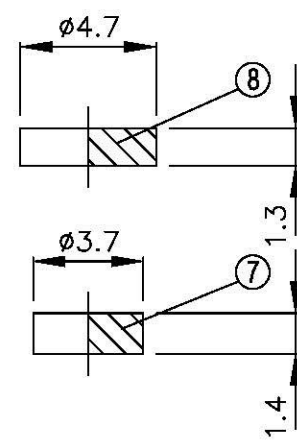
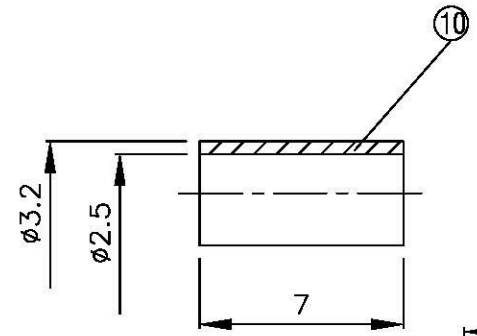


NO	DESCRIPTION	MATERIAL	Q'TY	FINISH	REMARK
1	SHELL	BRASS	1	GOLD	B-SMA0043-G
2	GASKET	SI RUBBER	1	GOLD	RU-0008
3	WASHER	PH.BRONZE	1	GOLD	W-0012-G
4	INSULATION	TEFLON	1	TEFLON	I-0138T
5	PIN	BRASS	1	GOLD	P-SMA0065-G
6	BODY	BRASS	1	GOLD	B-SMA0214-G
7	INSULATION	TEFLON	1	TEFLON	I-0136T
8	WASHER	BRASS	1	GOLD	W-0023-G
9	BODY	BRASS	1	GOLD	B-SMA0154-G
10	RING	BRASS	1	GOLD	R-0038-G



(Recommended Stripping Dimension)



All Connectors
 www.allconnectors.de info@allconnectors.de
 TEL: +49 44 711 20000 FAX: +49 44 711 20000
 30734 Wildorf, Germany KALLUNGEN 11 22

TITLE: SMA MALE CRIMP FOR RG 178U

PART NO. SMA-02M-TGG

DRAWING NO. SMA 02M TGG

DRAWN MARY DATE 90.11.02

CHECKED 蘇姿潔 DATE

Q.A. 馮健華 DATE

APPROVAL 徐燦霖 DATE

REVISION DATE

DIMENSIONS ARE IN MILLIMETERS

UNLESS OTHERWISE SPECIFIED TOLERANCE

0.5-5=±0.2	120-315=±1
5-30=±0.4	315-1000=±1.6
30-120±0.6	1000-2000=±2.4

SCALE 4:1 SIZE A

REVISION	
DESCRIPTION	ENGINEER