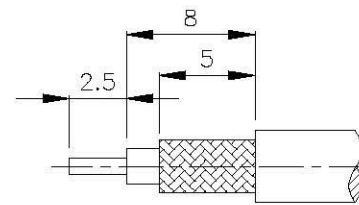
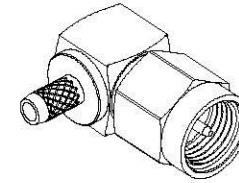


NO	DESCRIPTION	MATERIAL	Q'TY	FINISH	REMARK
1	SHELL	BRASS	1	NICKEL	B-SMA0043-N
2	GASKET	SI RUBBER	1	RUBBER	RU-0008
3	WASHER	PH.BRONZE	1	NICKEL	W-0012
4	INSULATION	TEFLON	1	TEFLON	I-0138T
5	PIN	BRASS	1	GOLD	P-SMA0065-G
6	BODY	BRASS	1	NICKEL	B-SMA0155-N
7	INSULATION	TEFLON	1	TEFLON	I-0136T
8	WASHER	BRASS	1	NICKEL	W-0023-N
9	BODY	BRASS	1	NICKEL	B-SMA0154-N
10	RING	BRASS	1	NICKEL	R-0002-N



(Recommended Stripping Dimension)



D

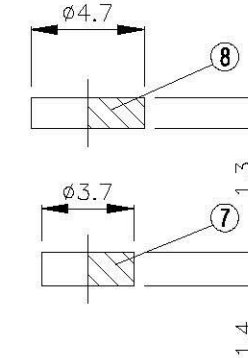
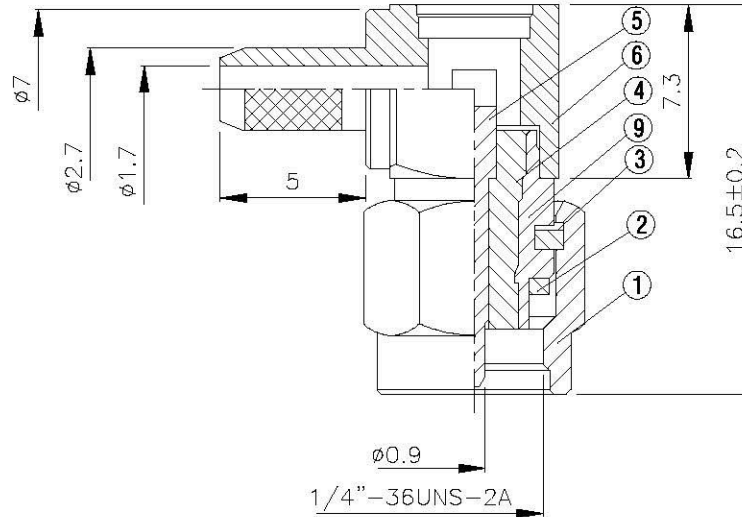
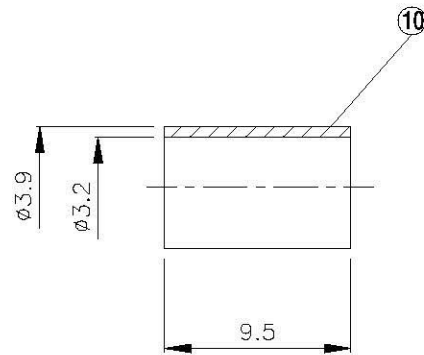
D

C

C

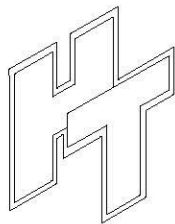
B

B



A

A



**All Connectors**

www.allconnectors.com info@allconnectors.com  
TEL: 0086 711 7996663 FAX: 0086 711 7996664  
20/54 Hibernia St. Summary Kolbenmarkt, 25

TITLE **SMA MALE CRIMP FOR RG 174U**

PART NO. **SMA-02LV1-TGN**

DRAWING NO. **SMA 02LV1 TGN**

DRAWN **MARY** DATE **96.03.27**

CHECKED **蘇志欣** DATE **97.04.29**

Q.A. **蘇姿潔** DATE

APPROVAL **徐燦霖** DATE

REVISION DATE

DIMENSIONS ARE IN MILLIMETERS

UNLESS OTHERWISE SPECIFIED TOLERANCE

0.5-5=±0.2	120-315=±1
5-30=±0.4	315-1000=±1.6
30-120=±0.6	1000-2000=±2.4

SCALE 4:1 SIZE A

REVISION

DESCRIPTION	ENGINEER

4

3

2

1