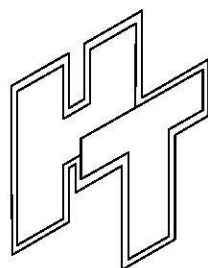
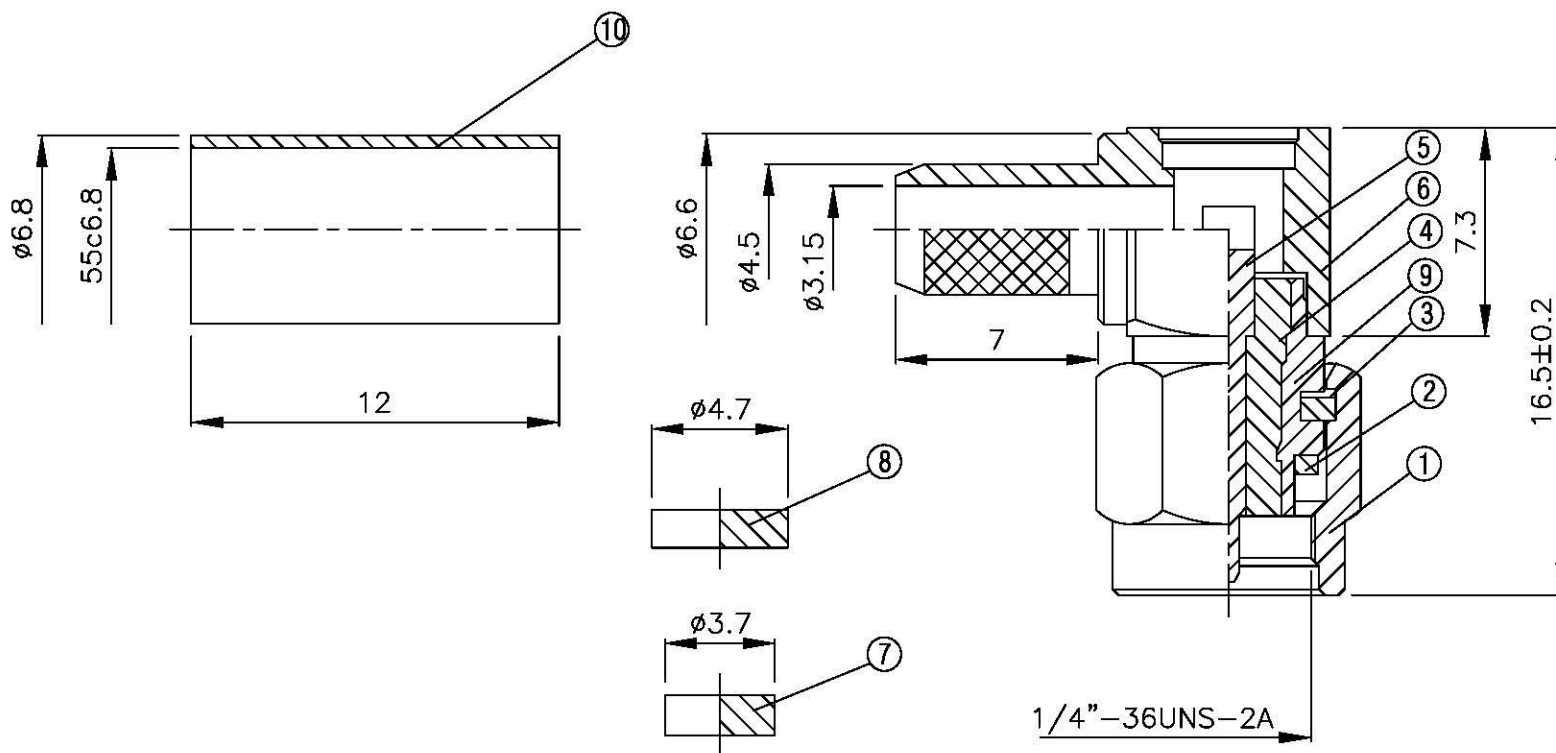
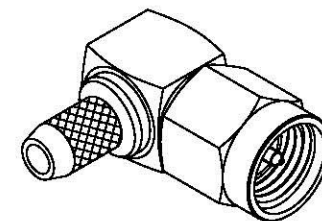
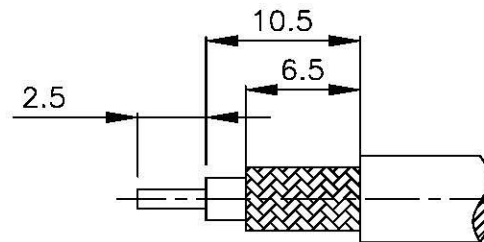


NO	DESCRIPTION	MATERIAL	Q'TY	FINISH	REMARK
1	SHELL	BRASS	1	GOLD	B-SMA0043-G
2	GASKET	SI RUBBER	1	GOLD	RU-0008
3	WASHER	PH.BRONZE	1	GOLD	W-0012
4	INSULATION	TEFLON	1	TEFLON	I-0138T
5	PIN	BE CU	1	GOLD	P-SMA0065-G
6	BODY	BRASS	1	GOLD	B-SMA0140-G
7	INSULATION	TEFLON	1	TEFLON	I-0136T
8	WASHER	BRASS	1	GOLD	W-0023-G
9	BODY	BRASS	1	GOLD	B-SMA0154-G
10	RING	BRASS	1	GOLD	R-0008-G



**All Connectors**  
www.allconnectors.de    info@allconnectors.de  
 TEL: 0049 711 7091561    Fax: 0049 711 7091569  
 20294 Hildesheim - Germany    Kallmeyerstr. 25

TITLE SMA MALE CRIMP  
 FOR LOW LOSS RG 58/U

PART NO. SMA-02LL-TGG

DRAWING NO. SMA 02LL TGG

DRAWN	MARY	DATE	96.03.15
CHECKED	蘇姿潔	DATE	
Q.A.	馮健華	DATE	
APPROVAL	徐燦霖	DATE	
REVISION		DATE	

DIMENSIONS ARE IN MILLIMETERS			
UNLESS OTHERWISE SPECIFIED TOLERANCE			
0.5-5=±0.2	120-315=±1		
5-30=±0.4	315-1000=±1.6		
30-120±0.6	1000-2000=±2.4		
SCALE	4:1	SIZE	A

REVISION	
DESCRIPTION	ENGINEER