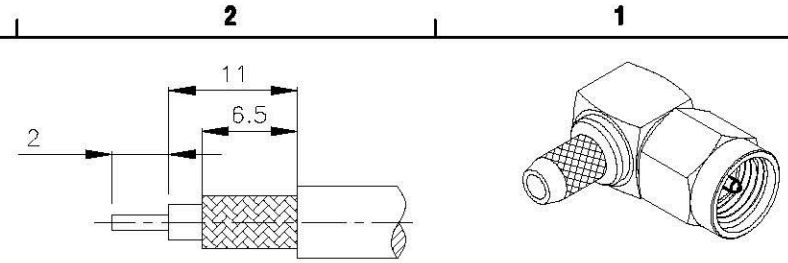


NO	DESCRIPTION	MATERIAL	Q'TY	FINISH	REMARK
1	SHELL	BRASS	1	GOLD	B-SMA0043-G
2	GASKET	SI RUBBER	1	GOLD	RU-0008
3	WASHER	PH.BRONZE	1	GOLD	W-0012
4	INSULATION	TEFLON	1	TEFLON	I-0138T
5	PIN	BE CU	1	GOLD	P-SMA0065-G
6	BODY	BRASS	1	GOLD	B-SMA0140-G
7	INSULATION	TEFLON	1	TEFLON	I-0136T
8	WASHER	BRASS	1	GOLD	W-0023-G
9	BODY	BRASS	1	GOLD	B-SMA0154-G
10	RING	BRASS	1	GOLD	R-0047-G



D

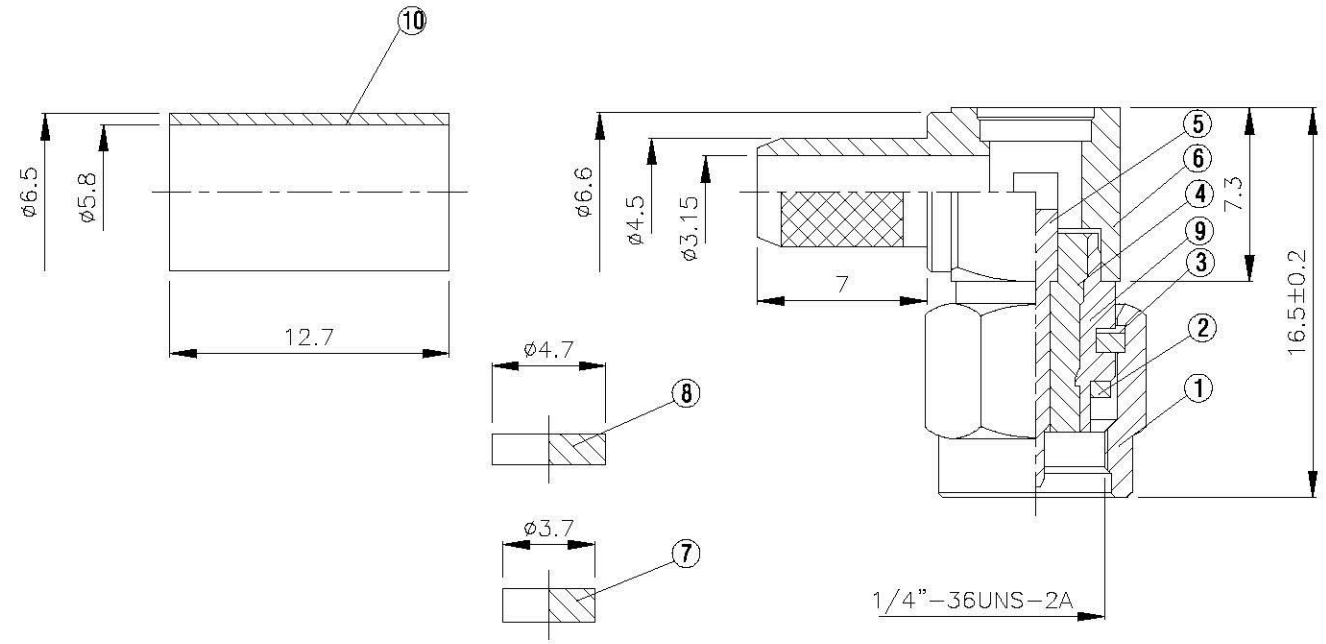
D

C

C

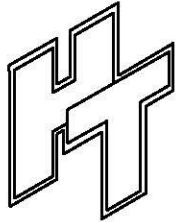
B

B



A

A



All Connectors
 www.allconnectors.de info@allconnectors.de
 Tel.: +49 30 91 91 91 91 Fax: +49 30 91 91 91 91
 70734 Filderstadt - Germany Bellenbergstr. 25

TITLE SMA MALE CRIMP FOR RG-400
PART NO. SMA-02FA-TGG
DRAWING NO. SMA 02FA TGG

DRAWN MARY	DATE 97.05.08
CHECKED 蘇志欣	DATE
Q.A. 蘇姿潔	DATE
APPROVAL 徐慶霖	DATE
REVISION	DATE

DIMENSIONS ARE IN MILLIMETERS			
UNLESS OTHERWISE SPECIFIED TOLERANCE			
0.5-5=±0.2	120-315=±1		
5-30=±0.4	315-1000=±1.6		
30-120±0.6	1000-2000=±2.4		
SCALE 4:1	SIZE A		

REVISION	
DESCRIPTION	ENGINEER

4

3

2

1