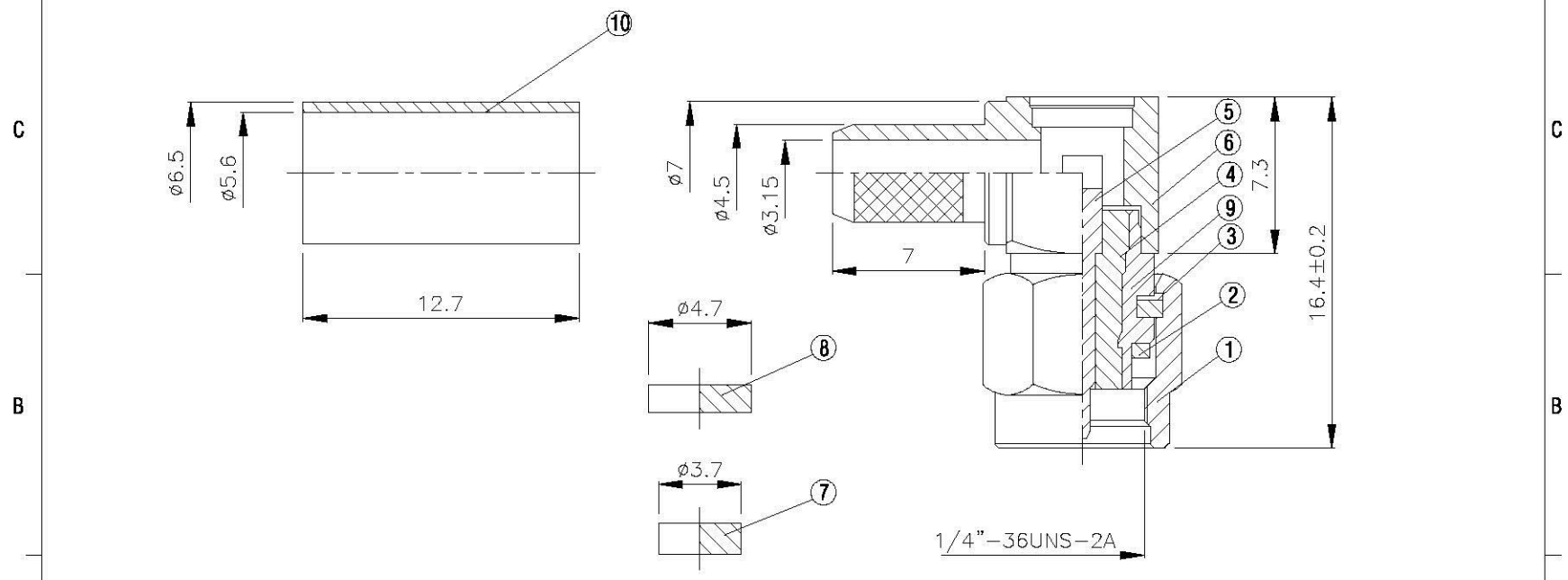
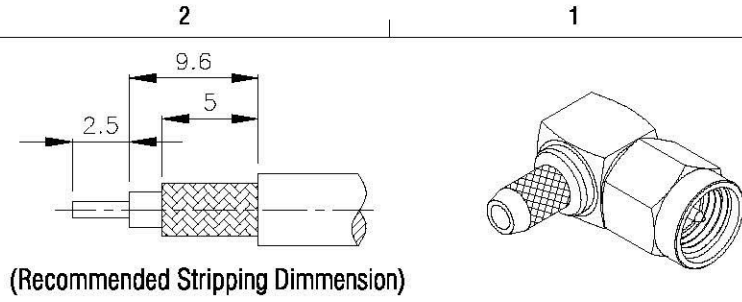
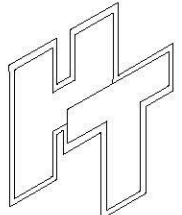


NO	DESCRIPTION	MATERIAL	Q'TY	FINISH	REMARK
1	SHELL	BRASS	1	GOLD	B-SMA0043-G
2	GASKET	SI RUBBER	1	GOLD	RU-0008
3	WASHER	PH.BRONZE	1	GOLD	W-0012
4	INSULATION	TEFLON	1	TEFLON	I-0138T
5	PIN	BE CU	1	GOLD	P-SMA0065-G
6	BODY	BRASS	1	GOLD	B-SMA0140-G
7	INSULATION	TEFLON	1	TEFLON	I-0136T
8	WASHER	BRASS	1	GOLD	W-0023-G
9	BODY	BRASS	1	GOLD	B-SMA0154-G
10	RING	BRASS	1	GOLD	R-0007-G



	All Connectors <small>www.allconnectors.com in Foshan, Guangdong Tel: +86 (0) 757 8552419 Fax: +86 (0) 757 8555547 227064 Foshan, Guilan, Germany Kailiemansh, 28</small>	DRAWN MARY DATE 96.03.15	DIMENSIONS ARE IN MILLIMETERS			REVISION	
	TITLE SMA MALE CRIMP FOR RG 58/U	CHECKED 蘇志欣 DATE 97.05.30	UNLESS OTHERWISE SPECIFIED TOLERANCE			DESCRIPTION	ENGINEER
	PART NO. SMA-02F-TGG	Q.A. 蘇姿潔 DATE	0.5-5=±0.2 120-315=±1				
	DRAWING NO. SMA 02F TGG	APPROVAL 徐慶霖 DATE	5-30=±0.4 315-1000=±1.6				
		REVISION DATE	30-120±0.6 1000-2000=±2.4	SCALE 4:1	SIZE A		