

SMA Series



SMA Series

SMA (Sub-Miniature-A) series is a very popular coaxial connector, which is supplied with a threaded coupling interface. The impedance of the SMA is controlled at 50 ohms, and this series can be used up to frequencies of over 18GHz (depending on type). This connector is suitable for the standard ranges of flexible & semi-rigid cables, and it is also available as a flange or PCB mounted version.

Applications:

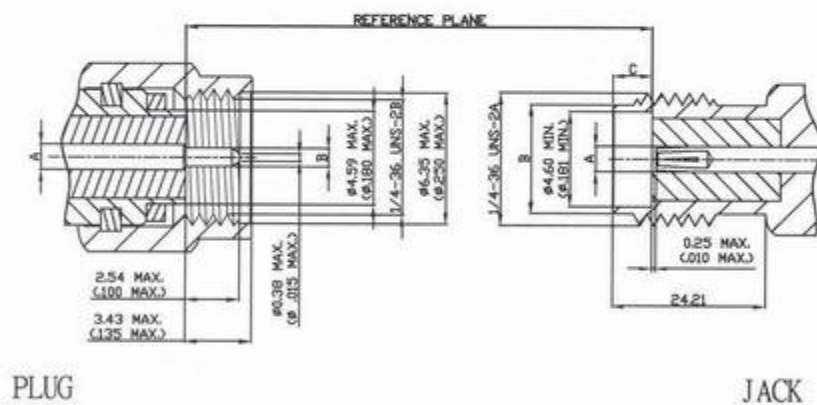
*telecommunications *testing equipment *PC/LAN *microwave components *wireless *instrumentation

Interface dimensions conformable to the Standards:

International: IEC 169-15

USA: MIL-C-39012

SMA Interface Dimensions:



SMA Series					
PLUG			JACK		
	Minimum	Maximum	Minimum	Maximum	
A	1.24(.049)	1.30(.051)	1.24(.049)	1.30(.051)	A
B	0.90(.035)	0.94(.037)	5.28(.208)	5.49(.216)	B
			1.88(.074)	1.98(.078)	C

*Millimeters(Inches)