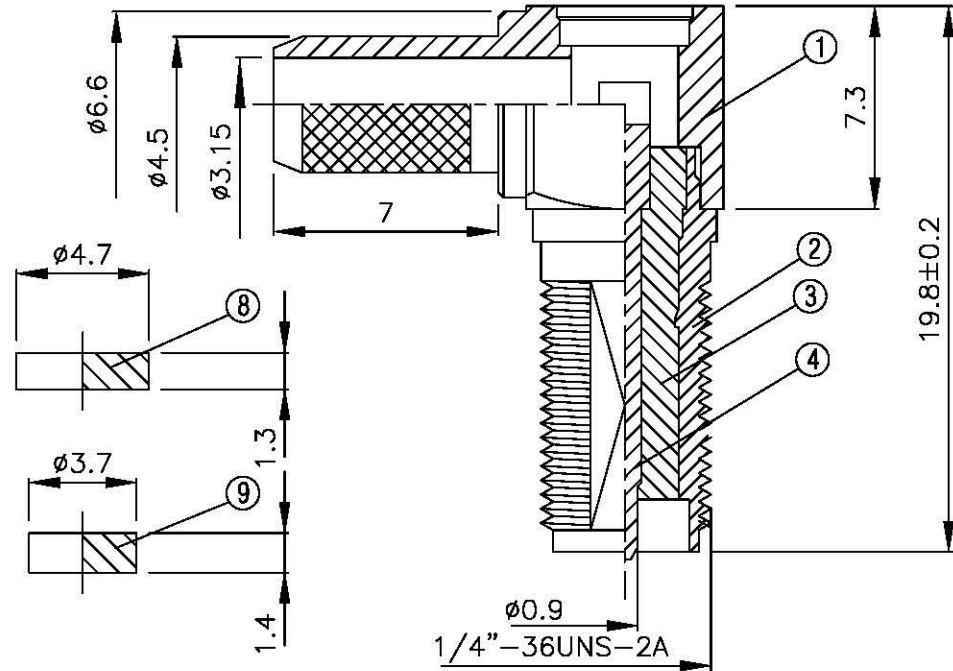
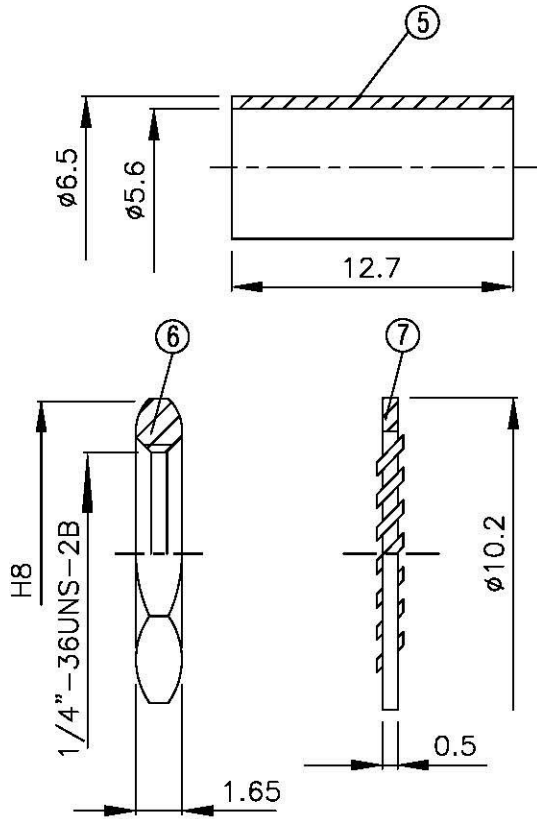
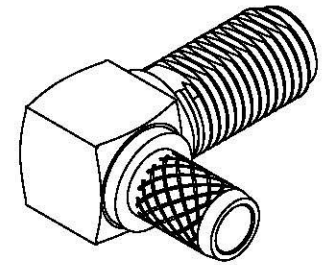
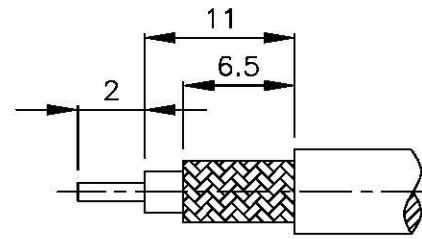


NO	DESCRIPTION	MATERIAL	Q'TY	FINISH	REMARK
1	BODY	BRASS	1	NICKEL	B-SMA0140-N
2	BODY	BRASS	1	NICKEL	B-SMA0145-N
3	INSULATION	TEFLON	1	TEFLON	I-0198T
4	PIN	BRASS	1	GOLD	P-SMA0817-G
5	RING	BRASS	1	NICKEL	R-0007-N
6	NUT	BRASS	2	GOLD	N-0006-N
7	WASHER	BRASS	2	GOLD	W-0016-N
8	WASHER	BRASS	1	GOLD	W-0023-N
9	INSULATION	TEFLON	1	TEFLON	I-0136T



	<b>All Connectors</b> <small>www.allconnectors.de    info@allconnectors.de          TEL: 0049 711 206308    Fax: 0049 711 206304          KUNZLEHILFENSTR. 25    KREUZWEIMAR, 72539</small>	DRAWN    MARY    DATE    96.02.12	DIMENSIONS ARE IN MILLIMETERS		REVISION	
	TITLE SMA MALE CRIMP FOR RG 58/U REVERSE POLARITY	CHECKED    黄巧君    DATE	UNLESS OTHERWISE SPECIFIED TOLERANCE		DESCRIPTION	ENGINEER
	PART NO.    SMA-93F-TGN-RP	Q.A.    蘇姿潔    DATE	0.5-5=±0.2	120-315=±1		
	DRAWING NO.    SMA 93F TGN RP	APPROVAL    徐燦霖    DATE	5-30=±0.4	315-1000=±1.6		
		REVISION    DATE	30-120±0.6	1000-2000=±2.4		
		SCALE    4:1    SIZE    A				