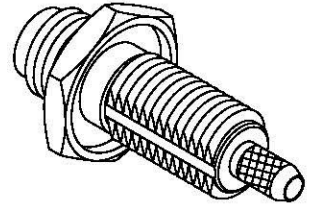
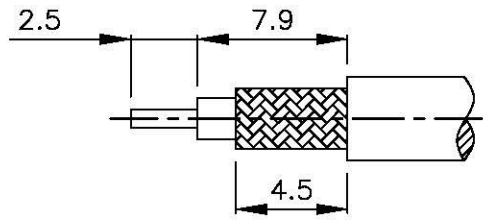
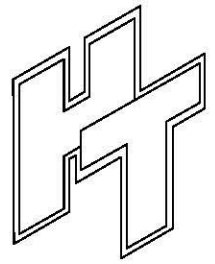
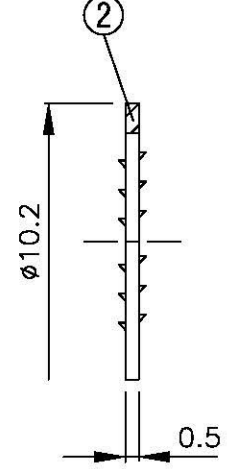
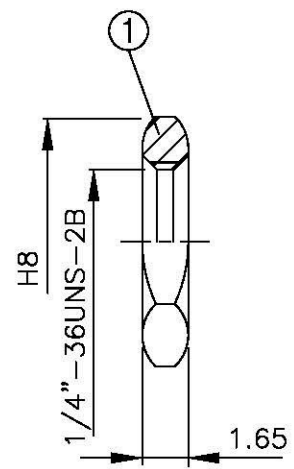
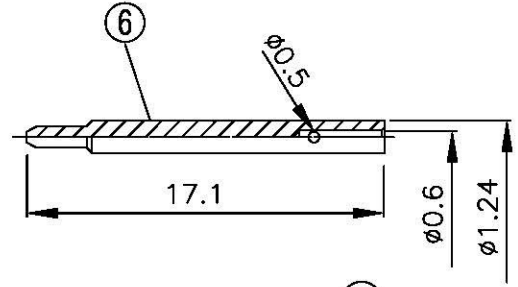
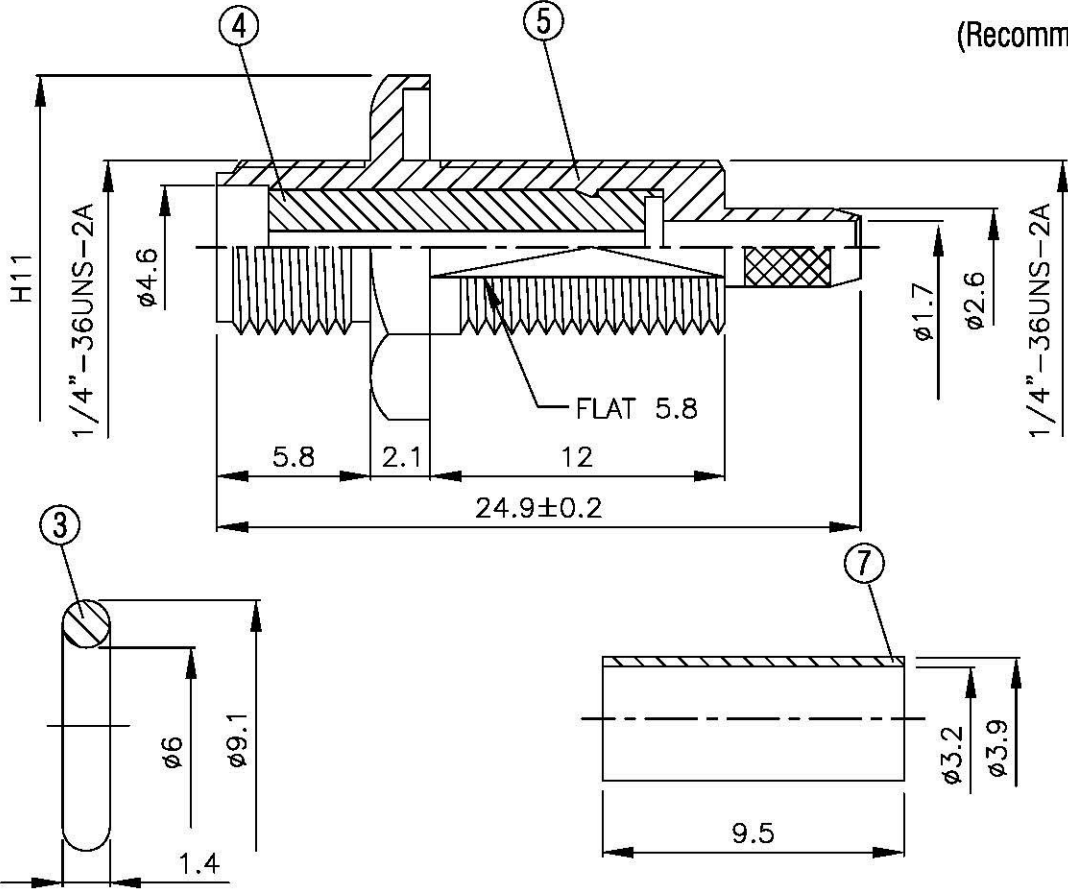


NO	DESCRIPTION	MATERIAL	Q'TY	FINISH	REMARK
1	NUT	BRASS	1	NICKEL	N-0006
2	WASHER	BRASS	1	NICKEL	W-0016
3	GASKET	SI RUBBER	1	RUBBER	RU-0014
4	INSULATION	TEFLON	1	TEFLON	I-0524T
5	BODY	BRASS	1	NICKEL	B-SMA1087-N
6	PIN	BRASS	1	GOLD	P-SMA0759-G
7	RING	BRASS	1	NICKEL	R-0002-N



(Recommended Stripping Dimension)



**All Connectors**  
 www.allconnectors.de  
 Tel.: 0049 711 7009300  
 70794 Gilderstadt - Germany  
 info@allconnectors.de  
 Fax: 0049 711 7009300  
 Kettenstr. 25

TITLE SMA FEMALE CRIMP FOR RG-316/U( REVERSE POLARITY )  
 PART NO. SMA-91LV1-TGN-RP  
 DRAWING NO. SMA-91LV1-TGN-RP

DRAWN	MARY	DATE	95.06.12
CHECKED	蘇姿潔	DATE	
Q.A.	馮健華	DATE	
APPROVAL	徐燦霖	DATE	
REVISION		DATE	

DIMENSIONS ARE IN MILLIMETERS			
UNLESS OTHERWISE SPECIFIED TOLERANCE			
0.5-5=±0.2	120-315=±1		
5-30=±0.4	315-1000=±1.6		
30-120±0.6	1000-2000=±2.4		
SCALE	4:1	SIZE	A

REVISION	
DESCRIPTION	ENGINEER