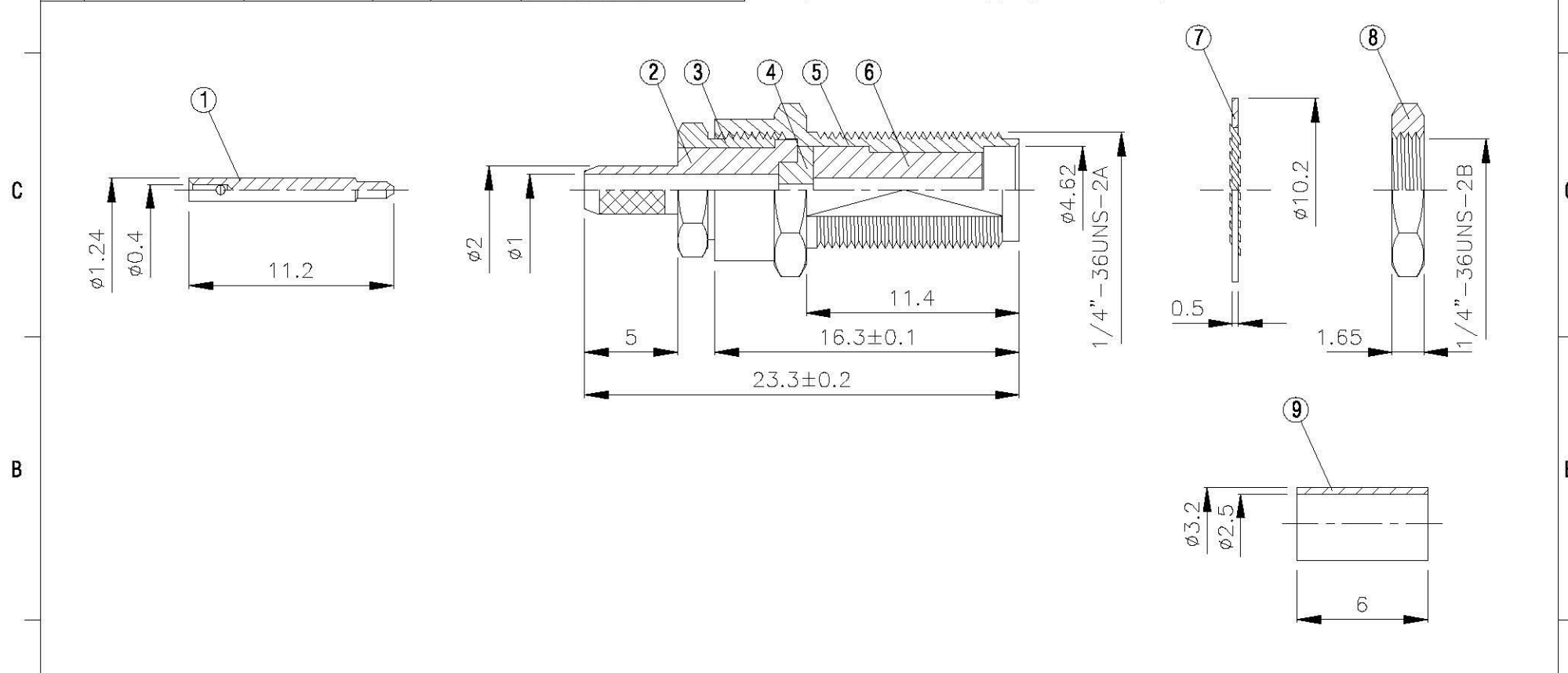
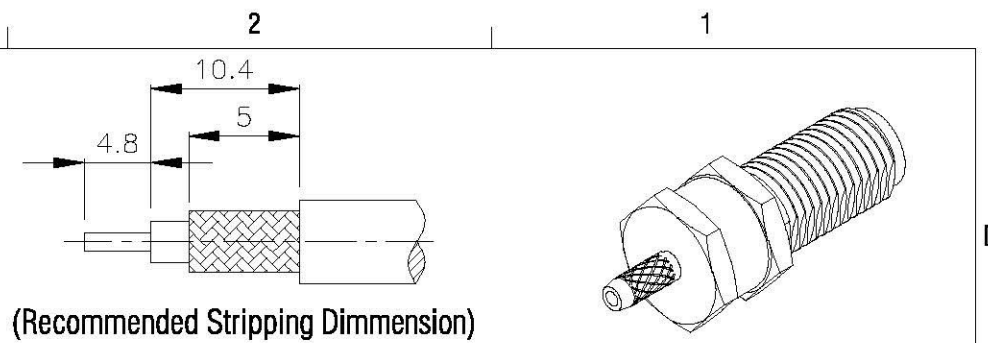


NO	DESCRIPTION	MATERIAL	Q'TY	FINISH	REMARK
1	PIN	BRASS	1	GOLD	P-SMA0095-G
2	BODY 1	BRASS	1	GOLD	B-SMA0233-G
3	NUT 1	BRASS	1	GOLD	N-0020-G
4	INSULATION 1	TEFLON	1	TEFLON	I-0047T
5	BODY 2	BRASS	1	GOLD	B-SMA0232-G
6	INSULATION 2	TEFLON	1	TEFLON	I-0046T
7	WASHER	BRASS	1	GOLD	W-0016
8	NUT 2	BRASS	1	GOLD	N-0006-G
9	RING	BRASS	1	GOLD	R-0022-G



	All Connectors <small>www.allconnectors.de info@allconnectors.de Tel: 0049 733 409045 Fax: 0049 733 7004504 70734 Eßlingen/ Germany Kellernersstr. 25</small>	DRAWN MARY DATE 98.07.12	DIMENSIONS ARE IN MILLIMETERS		REVISION	
	TITLE SMA FEMALE CRIMP FOR RG178/U (REVERSE POLARITY)	CHECKED 蘇志欣 DATE	UNLESS OTHERWISE SPECIFIED TOLERANCE		DESCRIPTION	ENGINEER
	PART NO. SMA-44M-TGG-RP	Q.A. 蘇姿潔 DATE	0.5-5=±0.2 120-315=±1			
	DRAWING NO. SMA 44M TGG RP	APPROVAL 徐燦霖 DATE	5-30=±0.4 315-1000=±1.6			
		REVISION DATE	30-120±0.6 1000-2000=±2.4	SCALE 4:1 SIZE A		