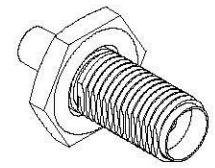
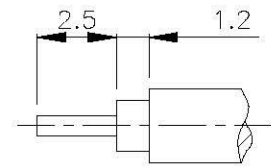
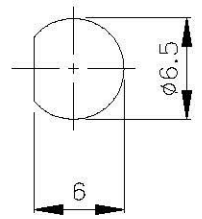
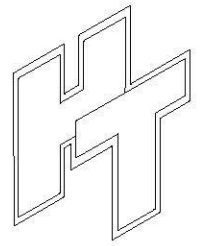
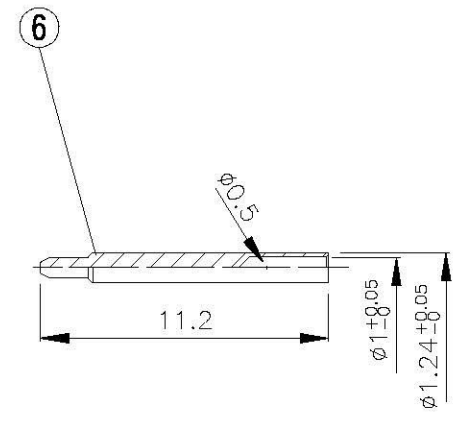
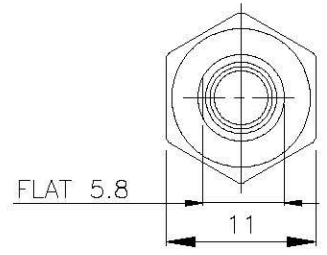
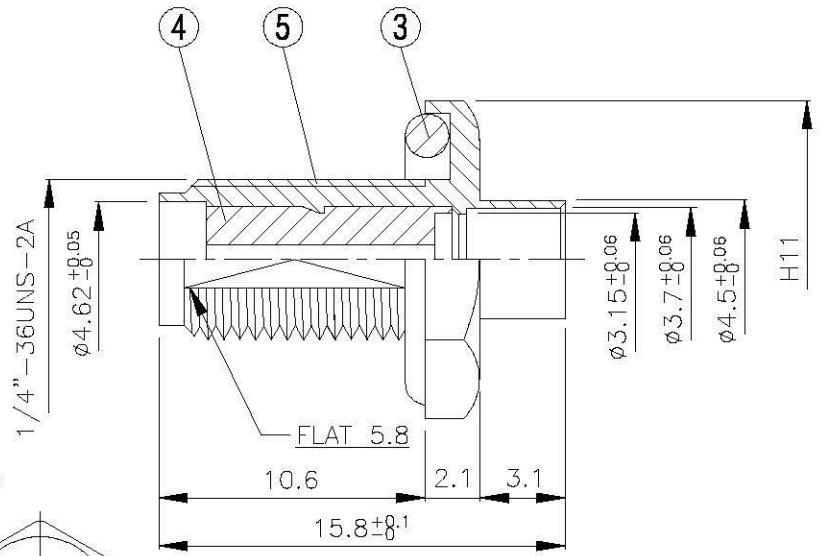
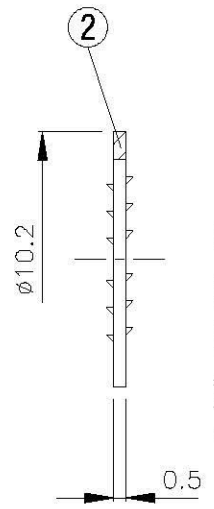
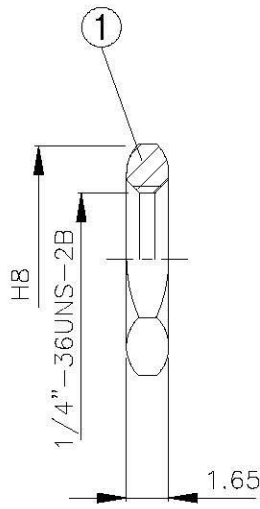


NO	DESCRIPTION	MATERIAL	Q'TY	FINISH	REMARK
1	NUT	BRASS	1	NICKEL	N-0006-G
2	WASHER	BRASS	1	NICKEL	W-0016-G
3	GASKET	SI RUBBER	1	RUBBER	RU-0014
4	INSULATION	TEFLON	1	TEFLON	I-0131T
5	BODY	BRASS	1	NICKEL	B-SMA0092-G
6	PIN	BRASS	1	GOLD	P-SMA0058-G



(Recommended Stripping Dimension)



**All Connectors**  
 www.allconnectors.de  
 Tel: 0049 711 7000503  
 70748 Hildesheim, Germany  
 info@allconnectors.de  
 Fax: 0049 711 7000504  
 klemm@allconnectors.de

**TITLE SMA FEMALE SOLDER REVERSE POLARITY FOR RG402U (.141)**

**PART NO. SMA-05V2-TGG-RP**

**DRAWING NO. SMA 05V2 TGG RP**

DRAWN	MARY	DATE	98.06.27
CHECKED	蘇志欣	DATE	
Q.A.	蘇姿潔	DATE	
APPROVAL	徐燦霖	DATE	
REVISION		DATE	

DIMENSIONS ARE IN MILLIMETERS			
UNLESS OTHERWISE SPECIFIED TOLERANCE			
0.5-5=±0.2	120-315=±1		
5-30=±0.4	315-1000=±1.6		
30-120=±0.6	1000-2000=±2.4		
SCALE	4:1	SIZE	A

REVISION	
DESCRIPTION	ENGINEER