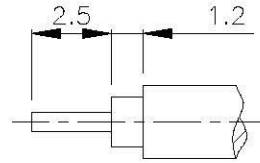
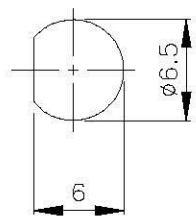
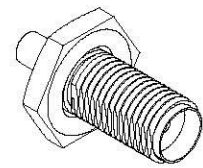


NO	DESCRIPTION	MATERIAL	Q'TY	FINISH	REMARK
1	NUT	BRASS	1	NICKEL	N-0006-G
2	WASHER	BRASS	1	NICKEL	W-0016-G
3	GASKET	SI RUBBER	1	RUBBER	RU-0014
4	INSULATION	TEFLON	1	TEFLON	I-0131T
5	BODY	BRASS	1	NICKEL	B-SMA0091-G
6	PIN	BRASS	GOLD	P-SMA0059-G	



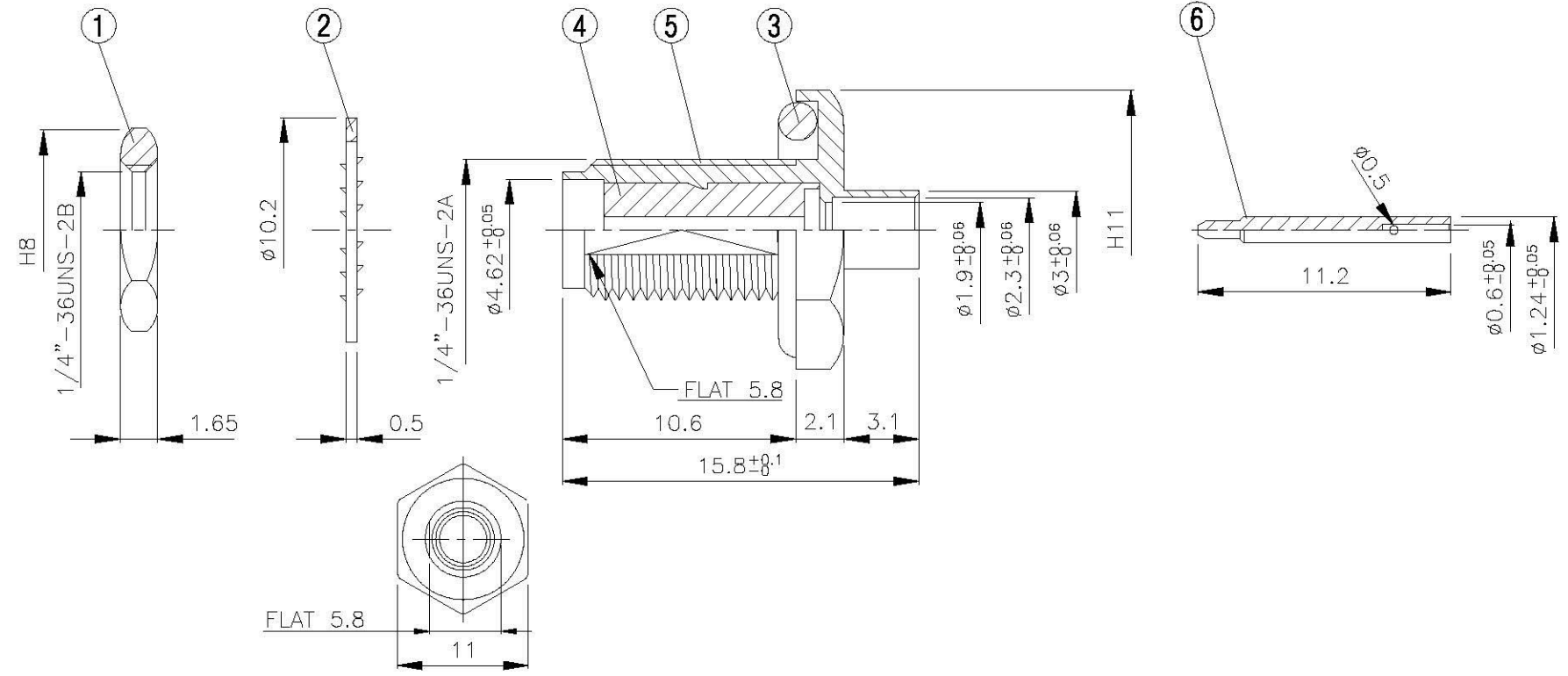
(Recommended Stripping Dimension)



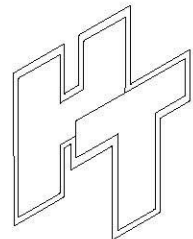
D

C

B



A



**All Connectors**

www.allconnectors.de  
Tel.: 0049 744 7092308  
info@allconnectors.de  
Fax: 0049 744 7092004  
info@allconnectors.de

DRAWN MARY DATE 96.07.12

CHECKED 蘇志欣 DATE

Q.A. 蘇姿潔 DATE

APPROVAL 徐燦霖 DATE

REVISION DATE

DIMENSIONS ARE IN MILLIMETERS

UNLESS OTHERWISE SPECIFIED TOLERANCE

0.5-5=±0.2 120-315=±1  
5-30=±0.4 315-1000=±1.6  
30-120=±0.6 1000-2000=±2.4

SCALE 4:1 SIZE A

REVISION

DESCRIPTION ENGINEER

TITLE SMA FEMALE SOLDER REVERSE POLARITY FOR RG405U (.085)

PART NO. SMA-05V1-TGG-RP

DRAWING NO. SMA 05V1 TGG RP

4

3

2

1

A