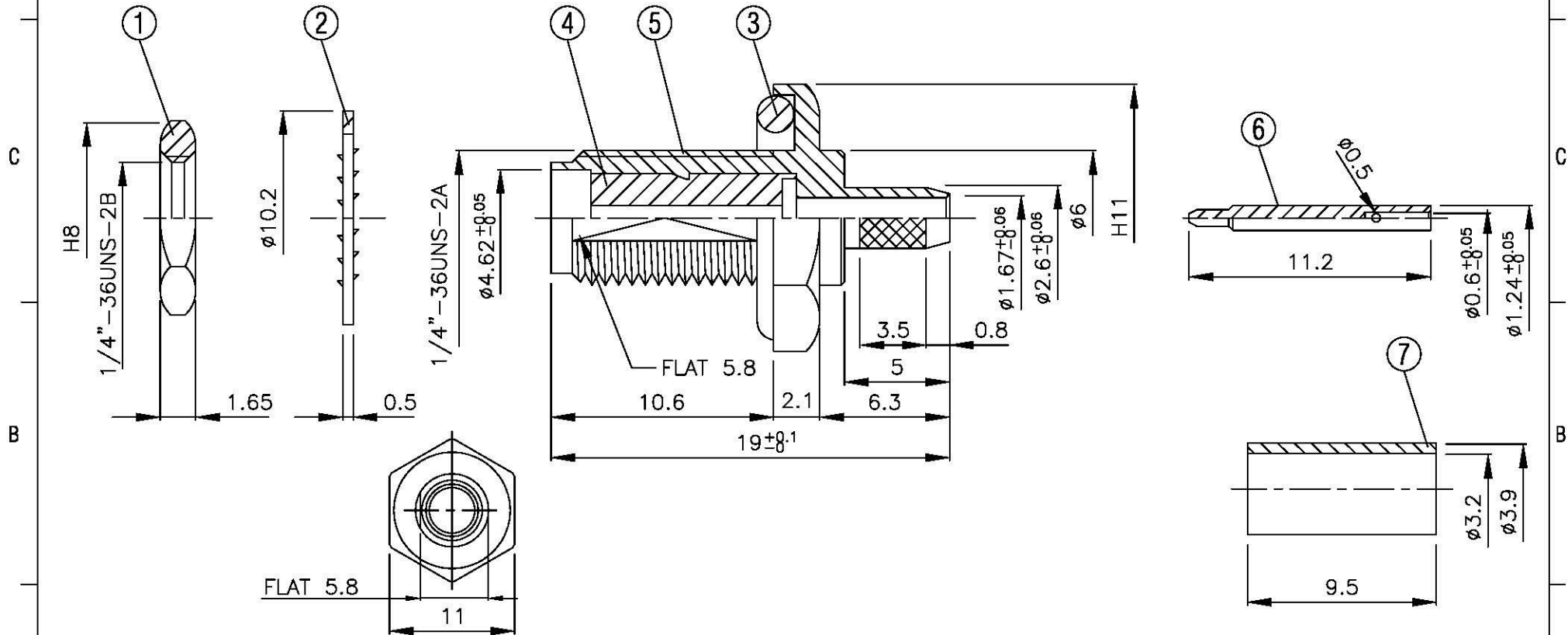
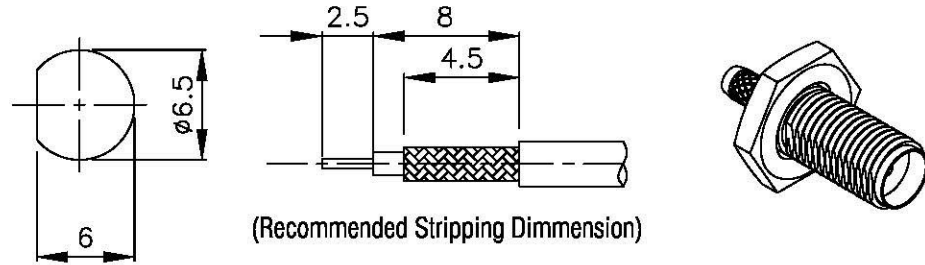
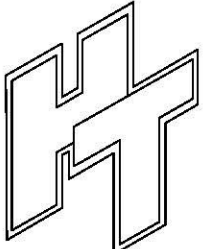


NO	DESCRIPTION	MATERIAL	Q'TY	FINISH	REMARK
1	NUT	BRASS	1	NICKEL	N-0006-G
2	WASHER	BRASS	1	NICKEL	W-0016
3	GASKET	SI RUBBER	1	RUBBER	RU-0014
4	INSULATION	TEFLON	1	TEFLON	I-0131T
5	BODY	BRASS	1	NICKEL	B-SMA0090-G
6	PIN	BRASS	1	GOLD	P-SAM0059-G
7	RING	BRASS	1	NICKEL	R-0002-G



	All Connectors <small>www.allconnectors.de Tel.: 0049 711 709503 20784 Hildesheim, Germany</small>		DRAWN MARY DATE 90.10.11	DIMENSIONS ARE IN MILLIMETERS		REVISION	
	<small>in: f@allconnectors.de Fax: 0049 711 709504 Kollumerstr. 25</small>		CHECKED 黃巧君 DATE 96.01.12	UNLESS OTHERWISE SPECIFIED TOLERANCE		DESCRIPTION	ENGINEER
	TITLE SMA FEMALE CRIMP REVERSE POLARITY FOR 174/U,316/U		Q.A. 蘇姿潔 DATE	0.5-5=±0.2	120-315=±1		
	PART NO. SMA-05LV1-TGG-RP		APPROVAL 徐燦霖 DATE	5-30=±0.4	315-1000=±1.6		
	DRAWING NO. SMA 05LV1 TGG RP		REVISION DATE	30-120±0.6	1000-2000=±2.4		
			SCALE 4:1	SIZE A			