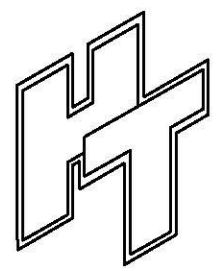
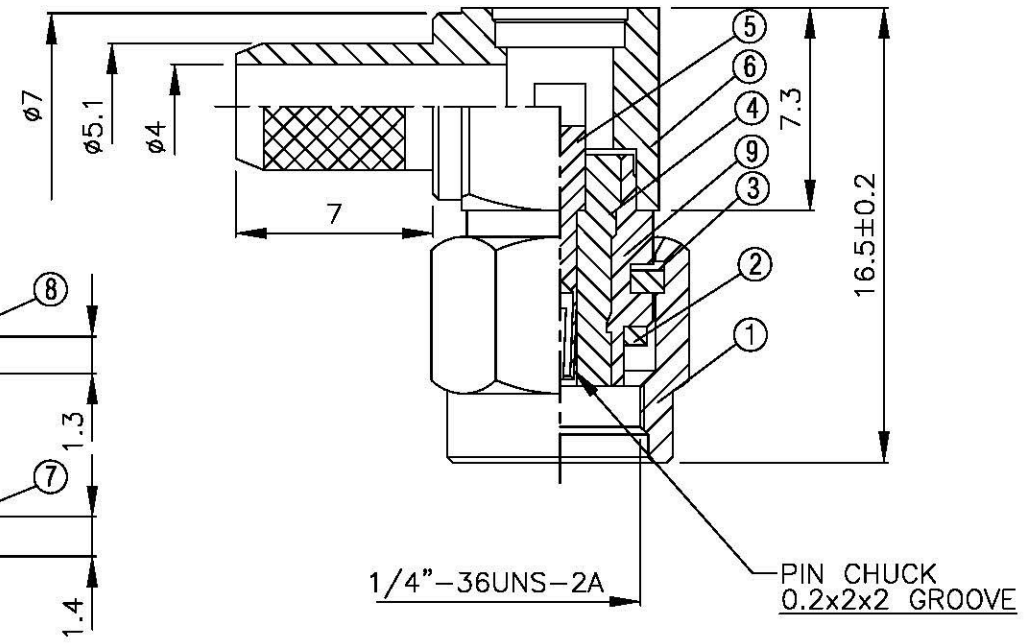
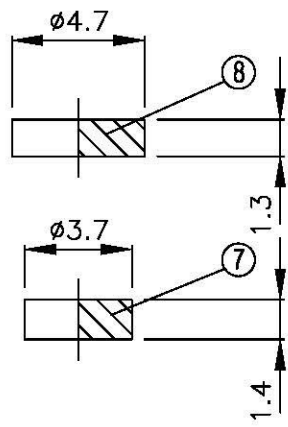
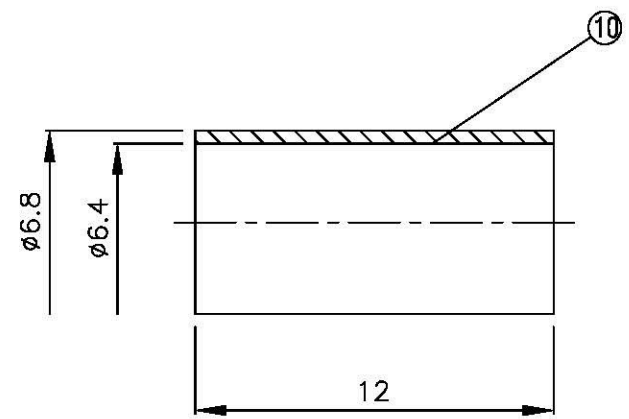
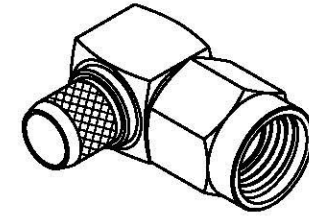
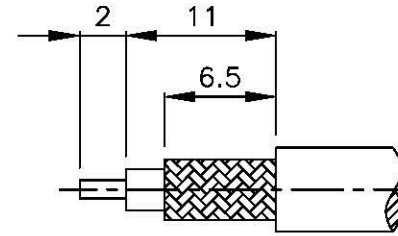


NO	DESCRIPTION	MATERIAL	Q'TY	FINISH	REMARK
1	SHELL	BRASS	1	NICKEL	B-SMA0043-G
2	GASKET	SI RUBBER	1	RUBBER	RU-0008
3	WASHER	PH.BRONZE	1	NICKEL	W-0012
4	INSULATION	TEFLON	1	TEFLON	I-0138T
5	PIN	BE CU	1	GOLD	P-SMA0562-G
6	BODY	BRASS	1	NICKEL	B-SMA0808-G
7	INSULATION	TEFLON	1	TEFLON	I-0136T
8	WASHER	BRASS	1	NICKEL	W-0023-G
9	BODY	BRASS	1	NICKEL	B-SMA0154-G
10	RING	BRASS	1	NICKEL	R-0064-G



**Allconnectors**  
 www.allconnectors.de  
 Tel.: 0049 711 7009508  
 71794 Ellbrunn, Germany  
 info@allconnectors.de  
 Fax: 0049 711 7009504  
 Kettnerstr. 25

TITLE SMA MALE ANGLE CRIMP REVERSE POLARITY FOR LMR-240  
 PART NO. SMA-02R-TGG-RP  
 DRAWING NO. SMA-02R-TGG-RP

DRAWN MARY DATE 93.10.28  
 CHECKED 黃巧君 DATE 96.04.20  
 Q.A. 蘇姿潔 DATE  
 APPROVAL 徐燦霖 DATE  
 REVISION DATE

DIMENSIONS ARE IN MILLIMETERS  
 UNLESS OTHERWISE SPECIFIED TOLERANCE  
 0.5-5=±0.2 120-315=±1  
 5-30=±0.4 315-1000=±1.6  
 30-120±0.6 1000-2000=±2.4  
 SCALE 4:1 SIZE A

REVISION	
DESCRIPTION	ENGINEER