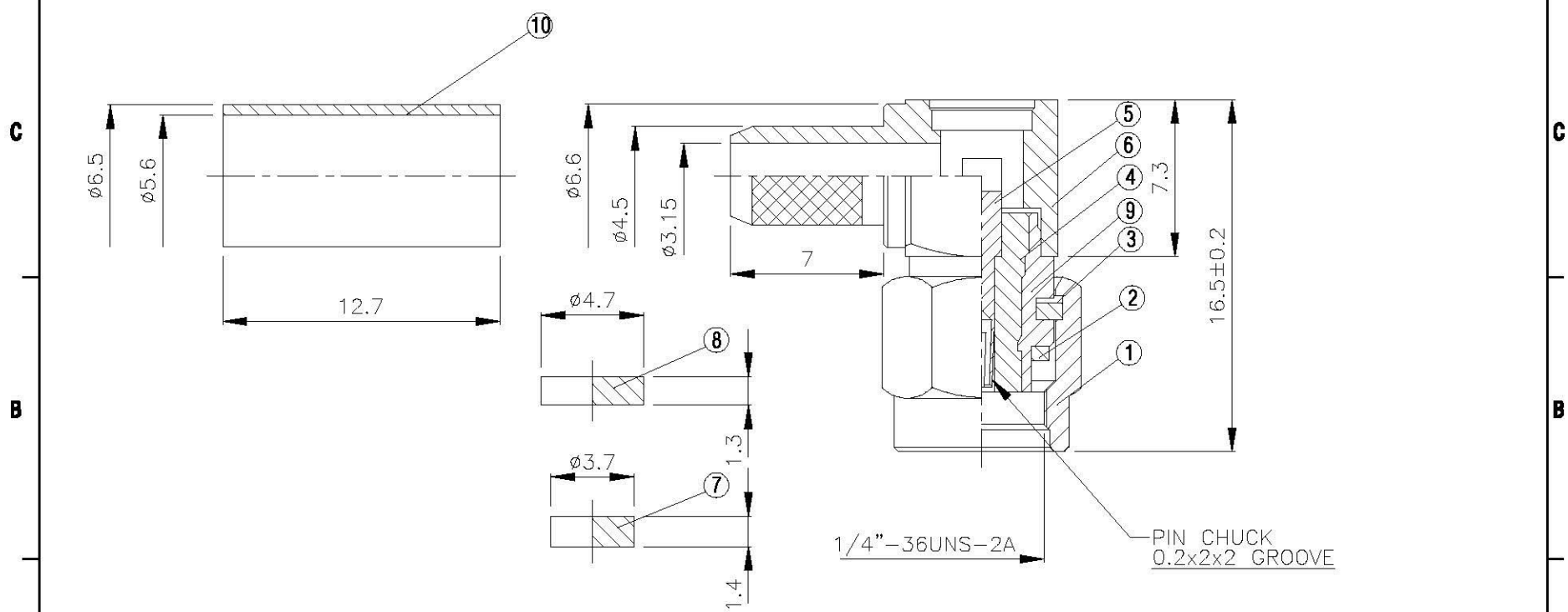
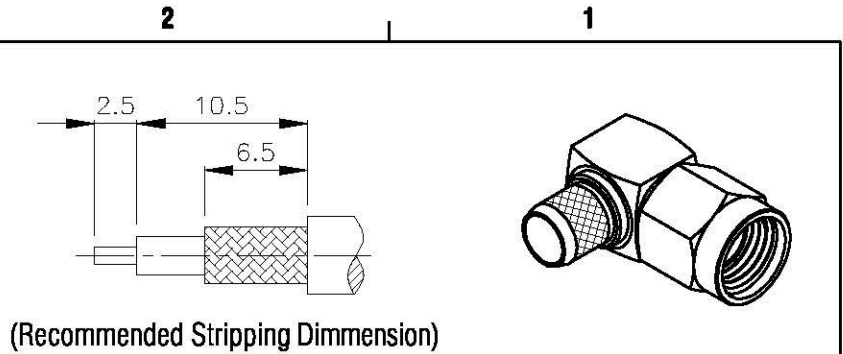


NO	DESCRIPTION	MATERIAL	Q'TY	FINISH	REMARK
1	SHELL	BRASS	1	GOLD	B-SMA0043-G
2	GASKET	SI RUBBER	1	GOLD	RU-0008
3	WASHER	PH.BRONZE	1	GOLD	W-0012
4	INSULATION	TEFLON	1	TEFLON	I-0138T
5	PIN	BE CU	1	GOLD	P-SMA0150-G
6	BODY	BRASS	1	GOLD	B-SMA0140-G
7	INSULATION	TEFLON	1	TEFLON	I-0136T
8	WASHER	BRASS	1	GOLD	W-0023-G
9	BODY	BRASS	1	GOLD	B-SMA0154-G
10	RING	BRASS	1	GOLD	R-0047-G



	All Connectors <small>www.allconnectors.de Tel: +0049 711 7095700 70794 Hildesfeld, Germany</small>	<small>Info@allconnectors.de Fax: +0049 711 7095704 Rüttelstraße, 25</small>	DRAWN MARY DATE 90.11.02	DIMENSIONS ARE IN MILLIMETERS			REVISION	
	TITLE SMA MALE CRIMP FOR RG 400/U REVERSE POLARITY		CHECKED 黄巧君 DATE 96.04.20	UNLESS OTHERWISE SPECIFIED TOLERANCE			DESCRIPTION	ENGINEER
	PART NO. SMA-02FA-TGG-RP		Q.A. 蘇姿潔 DATE	0.5-5=±0.2 120-315=±1 5-30= ±0.4 315-1000=±1.6 30-120±0.6 1000-2000=±2.4				
	DRAWING NO. SMA 02FA TGG-RP		APPROVAL 徐燦霖 DATE	SCALE 4:1 SIZE A				
			REVISION DATE					