



SMA-RP Series

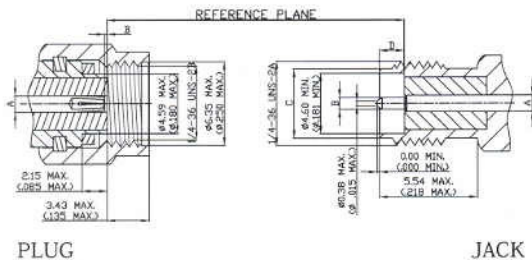
SMA-RP

SMA-RP series utilizes female contacts in the plug connector and male contacts in the jack connector. With such non-standard interface (which has been stipulated by the U.S. FCC -part 15.203), reverse polarity SMA is designed for uses in wireless applications. For connectors with 50 ohms impedance, RP SMA can be operated to frequencies 18GHz. The SMA-RP is suitable for the standard ranges of flexible cables, and also available as a PCB mounted version.

Applications:

- *spread spectrum wireless devices

SMA Interface Dimensions: Reverse Polarity



PLUG

JACK

SMA-RP Series					
PLUG			JACK		
	Minimum	Maximum		Minimum	Maximum
A	1.24(0.049)	1.30(0.051)		1.24(0.049)	1.30(0.051)
B	0.00(0.000)	0.25(0.010)		0.90(0.035)	0.94(0.037)
				5.28(0.208)	5.49(0.216)
				1.88(0.074)	1.98(0.078)

*Millimeters(Inches)