

MMCX Series

All Connectors

Simulation available
for 3D models
with electrical simulation

High speed available
for 3D models
with electrical simulation



MMCX

MMCX series is for use where the small dimensions have to be achieved. It's supplied with a snap on interface like SMB connectors, but in size is 45 % smaller. The impedance of MMCX is controlled at 50 ohms, and it can be operated up to the frequencies of 6GHz. The MMCX connector is suitable for the standard ranges of flexible & semi-rigid cables, and it is also available as a PCB mounted version.

Applications:

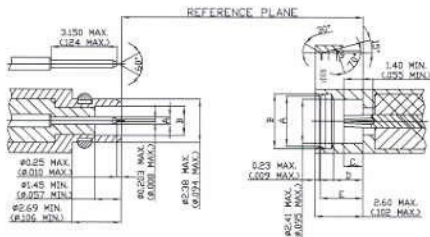
*antennas *wireless LANs *PCMCIA cards *instrumentation *GPS *cellular telephones

*satellite reception terminals *radio boards *RF test ports *broadband communications
*base stations

Interface dimensions conformable to the Standards:

European: CECC 22340

MMCX 50ohm Interface Dimensions:



PLUG

JACK

MMCX Series					
PLUG			JACK		
	Minimum	Maximum	Minimum	Maximum	
A	0.38(.015)	0.43(.017)	2.87(.113)	2.90(.114)	A
B	1.57(.057)	1.63(.064)	3.00(.118)	3.05(.120)	B
			0.89(.035)	1.20(.047)	C
			1.57(.062)	1.63(.064)	D
			2.30(.091)	2.34(.092)	E

*Millimeters(Inches)