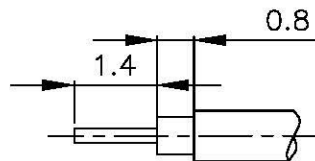
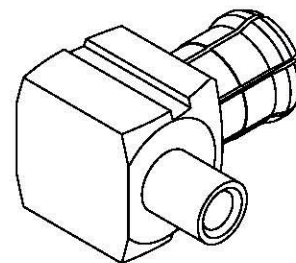


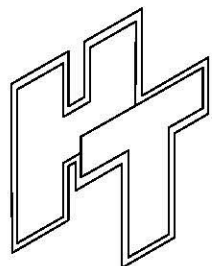
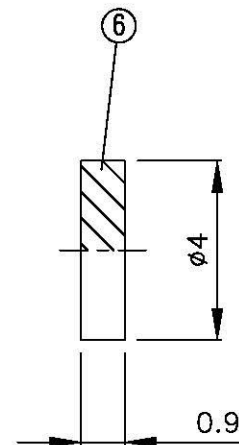
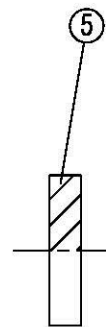
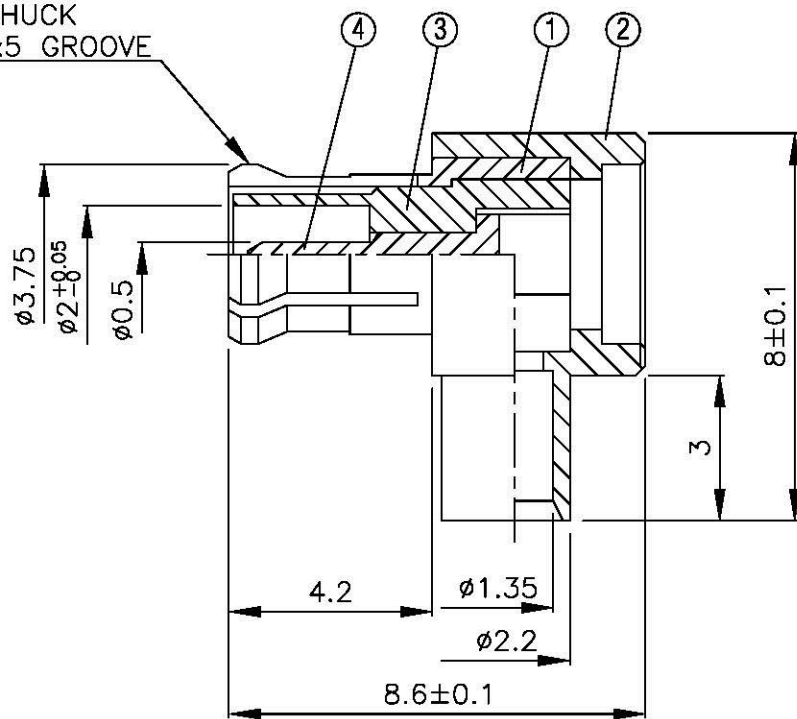
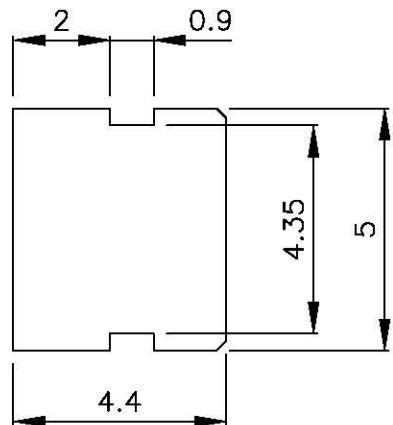
NO	DESCRIPTION	MATERIAL	QTY	FINISH	REMARK
1	BODY 1	BE CU	1	GOLD	B-MCX0129-G
2	BODY 2	BRASS	1	GOLD	B-MCX0132-G
3	INSULATION 1	TEFLON	1	TEFLON	I-0102T
4	PIN	BRASS	1	GOLD	P-MCX0018-G
5	INSULATION 2	TEFLON	1	TEFLON	I-0113T
6	WASHER	BRASS	1	GOLD	W-0017-G



(Recommended Stripping Dimension)



BODY CHUCK  
0.3x3.9x5 GROOVE



**All Connectors**

www.allconnectors.com info@allconnectors.de  
Tel: 0419 711 702501 Fax: 0419 711 702504  
70794 Filzschell - Germany E-Mail: connect@\_95

TITLE MCX MALE ANGLE  
SOLDER FOR RG402 (0.047)

PART NO. MCX-04V3-TGG

DRAWING NO. MCX 04V3 TGG

DRAWN	MARY	DATE	96.05.01
CHECKED	黄巧君	DATE	
Q.A.	蘇姿潔	DATE	
APPROVAL	徐燦霖	DATE	
REVISION		DATE	

DIMENSIONS ARE IN MILLIMETERS			
UNLESS OTHERWISE SPECIFIED TOLERANCE			
0.5-5=±0.2	120-315=±1		
5-30=±0.4	315-1000=±1.6		
30-120±0.6	1000-2000=±2.4		
SCALE	4:1	SIZE	A

REVISION	
DESCRIPTION	ENGINEER