

BMA Series

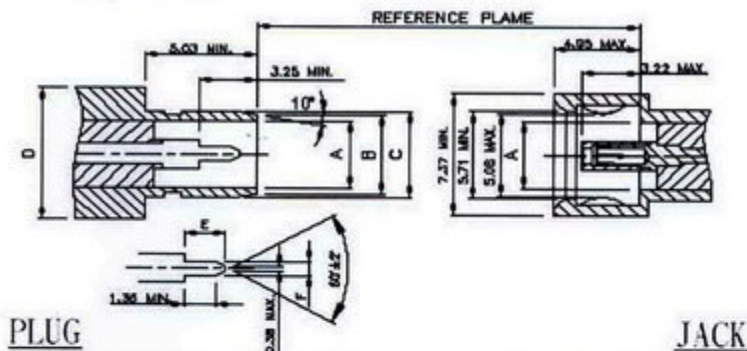
BMA Series

BMA series is blind-mate connector supplied with a slide-on coupling interface. This series presents an excellent range of products which features quick and reliable engagement. It is accessible in both fixed and float mount versions where any axial or radial are needed. BMA series can be operated to 18 GHz and its impedance is up to 50 ohms.

Applications:

*civil and military microwave circuits

BMA Interfacedimensions:



BMA Series					
PLUG			JACK		
	Minimum	Maximum	Minimum	Maximum	
A	4.08 nom.		4.08 nom.		A
B	4.88 nom.				
C	5.30	5.35			
D	7.62 nom.				
E	2.29 nom.				
F	0.90	0.94			