

1.6/5.6 Series

www.allconnectors.de
Tel: +49 (0) 39 31
E-Mail: info@all-connect.de

HW-Connectors LLC
Tel: +1 717 499 9494
info@allconnect.us

1.6/5.6

1.6/5.6 series is supplied with three different plug types: snap-on coupling (for rapid connections), threaded coupling (for vibration environments), and slide-in coupling (for rack and panel systems). Particularly, the jack for all types is the same, and will mate with all three plug types. This connector can be operated up to 1GHz, and its impedance is controlled at 75 ohms for all types. 1.6/5.6 connectors are suitable for the standard ranges of flexible cables, and also available as a PCB mounted version.

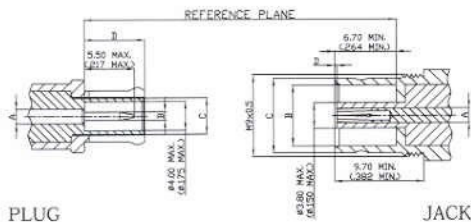
Applications:

*telecommunications *switching equipment and routers

Interface dimensions conformable to the Standards:

International: IEC 169-13

1.6/5.6 Interface Dimensions:



PLUG

JACK

1.6/5.6 Series					
PLUG			JACK		
	Minimum	Maximum		Minimum	Maximum
A	1.60	nom.		1.60	nom.
B	1.00(0.39)	1.06(0.42)		5.60	nom.
C	5.60	nom.		8.10(3.19)	8.25(3.25)
D	6.40(0.252)	6.60(0.260)		0.25(0.010)	0.75(0.030)

*Millimeters(Inches)