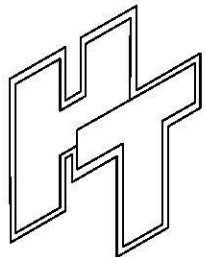
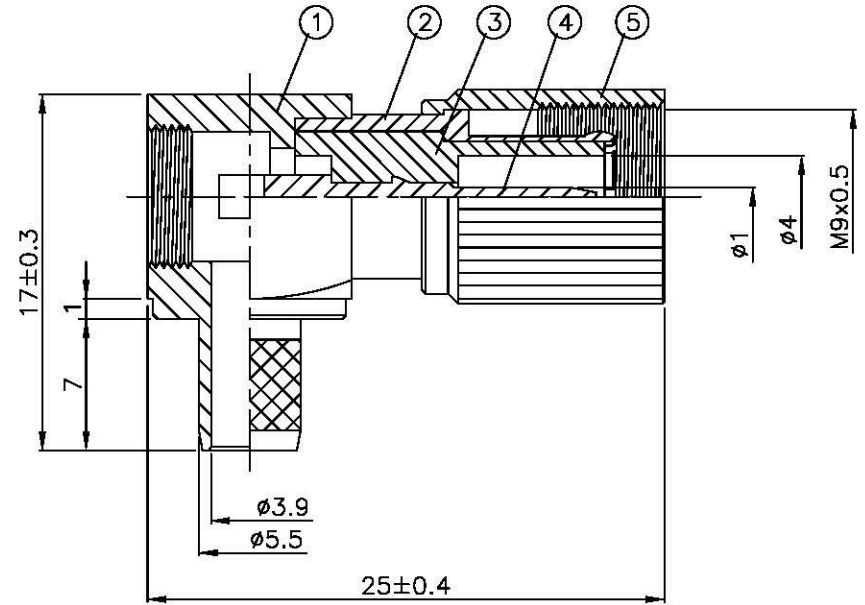
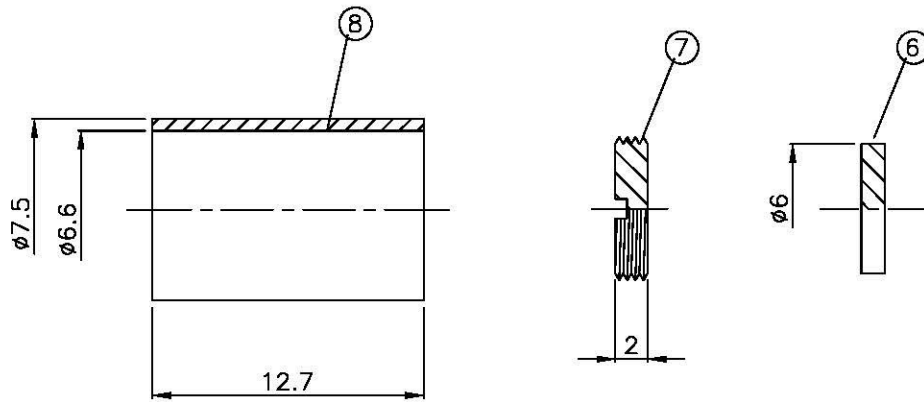
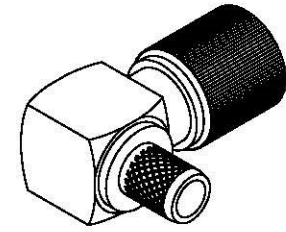
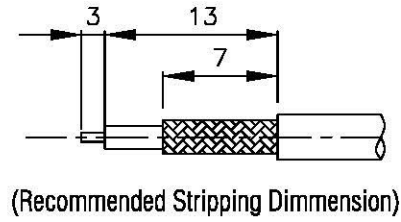


NO	DESCRIPTION	MATERIAL	Q'TY	FINISH	REMARK
1	BODY 1	BRASS	1	NICKEL	B-16560355-N
2	BODY 2	BRASS	1	GOLD	B-16560353-G
3	INSULATION	TEFLON	1	TEFLON	I-0176T
4	PIN	BRASS	1	GOLD	P-16560225-G
5	BODY 3	BRASS	1	NICKEL	B-16560354-N
6	INSULATION	TEFLON	1	TEFLON	I-0175T
7	WASHER	BRASS	1	NICKEL	W-0043-N
8	RING	BRASS	1	NICKEL	R-0018-N



**All Connectors**

www.allconnectors.de  
TEL: 0049 781 408-049  
70754 Eilderstadt, Germany

info@allconnectors.de  
Fax: 0049 781 408-044  
Kollmannstr. 25

TITLE 1.6/5.6 MALE CRIMP ANGLE  
FOR RG 59/U

PART NO. 1656-108G-TGN

DRAWING NO. 1656 108G TGN

DRAWN MARY

DATE 96.08.29

CHECKED 蘇志欣

DATE

Q.A. 蘇姿潔

DATE

APPROVAL 徐燦霖

DATE

REVISION

DATE

DIMENSIONS ARE IN MILLIMETERS

UNLESS OTHERWISE SPECIFIED  
TOLERANCE

0.5-5 =  $\pm 0.2$     120-315 =  $\pm 1$   
5-30 =  $\pm 0.4$     315-1000 =  $\pm 1.6$   
30-120 =  $\pm 0.6$     1000-2000 =  $\pm 2.4$

SCALE 4:1    SIZE A

REVISION

DESCRIPTION    ENGINEER