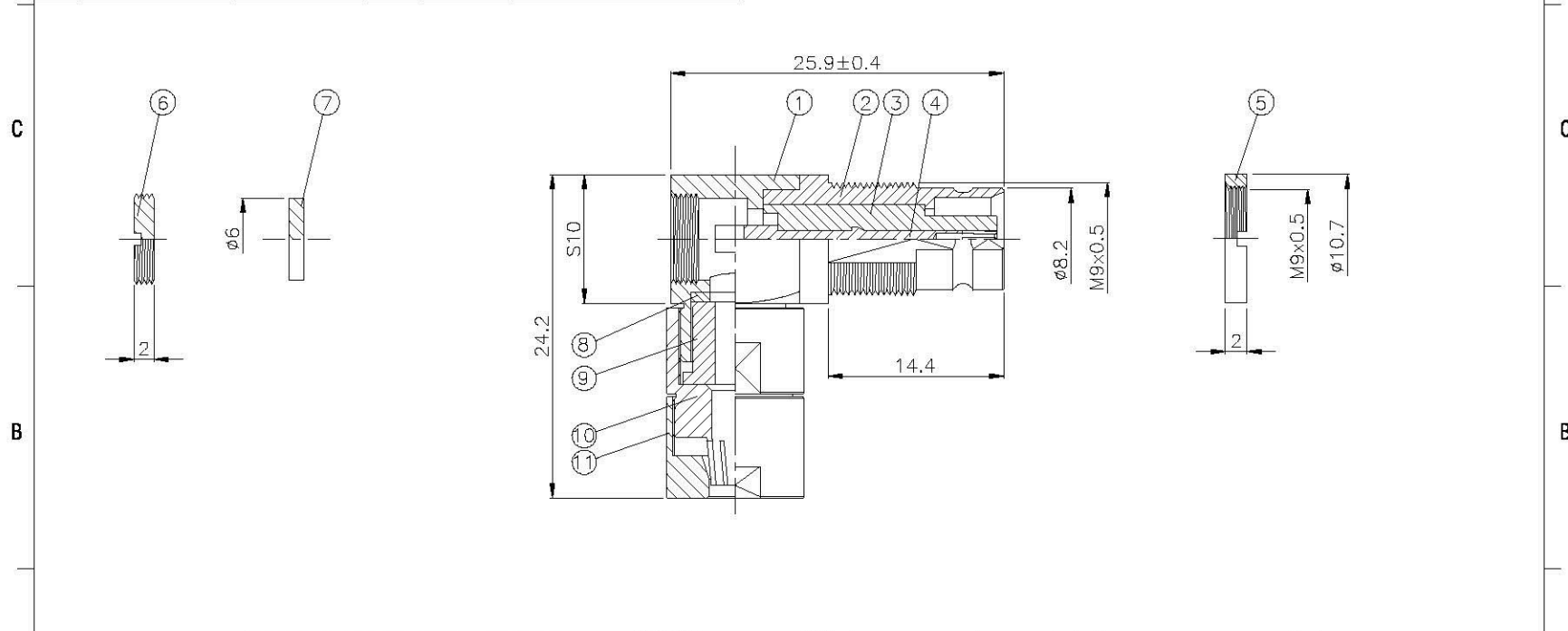
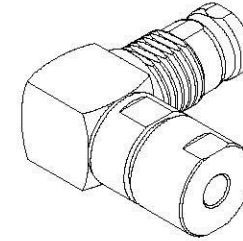
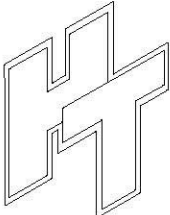


NO	DESCRIPTION	MATERIAL	Q'TY	FINISH	REMARK
1	BODY 1	BRASS	1	NICKEL	B-16560545-N
2	BODY 2	BRASS	1	GOLD	B-16560350-G
3	INSULATION	TEFLON	1	TEFLON	I-0173T
4	PIN	PH.BRONZE	1	GOLD	P-16560224-G
5	NUT	BRASS	1	NICKEL	N-0025-N
6	WASHER	BRASS	1	NICKEL	W-0043-N
7	INSULATION	TEFLON	1	TEFLON	I-0175T
8	WASHER	BRASS	1	SILVER	W-0050-S
9	SPIGOT	BRASS	1	SILVER	B-16560544-S
10	BODY	BRASS	1	NICKEL	B-16560543-N
11	SHELL	BRASS	1	TEFLON	N-0028-N



	<b>Allconnectors</b> <small>www.allconnectors.de info@allconnectors.de          70794 Filzbergstr. 10 Germany 63074 Frankfurt, Germany</small>	<b>DRAWN</b> MARY <b>CHECKED</b> 蘇志欣 <b>Q.A.</b> 蘇姿潔 <b>APPROVAL</b> 徐燦霖 <b>REVISION</b>	<b>DATE</b> 06.08.26 <b>DATE</b> <b>DATE</b> <b>DATE</b>	<b>DIMENSIONS ARE IN MILLIMETERS</b> <b>UNLESS OTHERWISE SPECIFIED TOLERANCE</b> 0.5-5=±0.2 120-315=±1 5-30=±0.4 315-1000=±1.6 30-120=±0.6 1000-2000=±2.4	<b>REVISION</b> DESCRIPTION ENGINEER
	<b>TITLE</b> 1.6/5.6 FEMALE ANGLE CLAMP FOR FLEX 3	<b>PART NO.</b> 1656-102V1C-TGN	<b>DRAWING NO.</b> 1656 102V1C TGN	<b>SCALE</b> 4:1 <b>SIZE</b> A	A

4 3 2 1