



MATERIAL

Insulator : PBT+30% Glass fiber

Contact Pin : Brass

SPECIFICATION

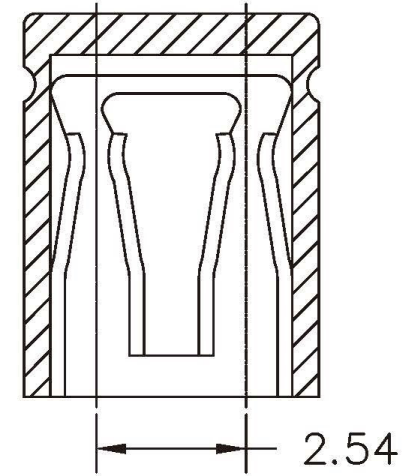
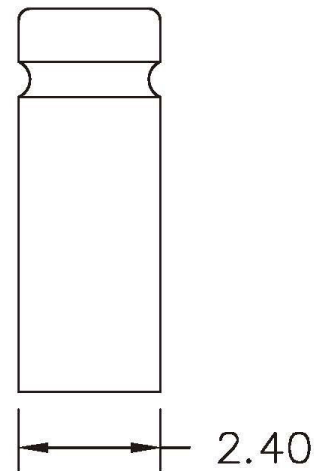
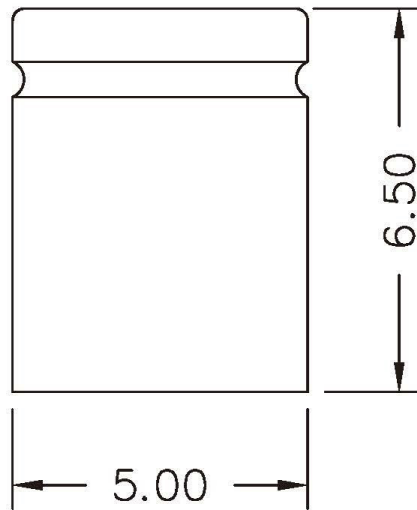
Current Rate : 3 AMP

Insulation Resistance : 5000MΩMin. at DC 500V

Contact Resistance : 20mΩMax. at DC 100mA

Dielectric Voltage : 1000V AC for one minute

Operation Temperature : -55°C to +105°C



All Connectors

www.allconnectors.de
Tel.: 0049 711 7009503
70794 Filderstadt - Germany

info@allconnectors.de
Fax: 0049 711 7009504
Kettnerstr. 25

RoHS Compliant

DRAWING BY CY
CHECKED BY GENIUS
UNIT / mm SCALE 1 : 1
DATE
SIZE A4

TOLERANCES ARE

X ±
.X ± 0.30
.XX ± 0.20
.XXX ±
ANG ±

PROJECTION



ORDER INFORMATION

J-A-06-LF
SERIES HIGH 6.5mm LEADFREE
CLOSE

DESCRIPTION: MINI JUMPER 2.54mm CLOSE 6.5mm