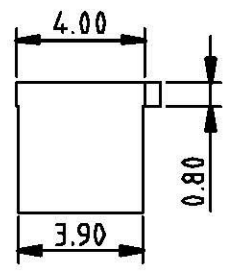
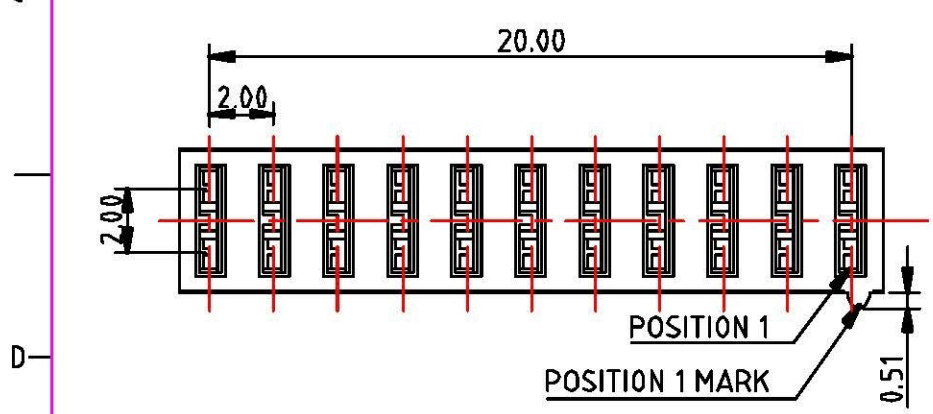
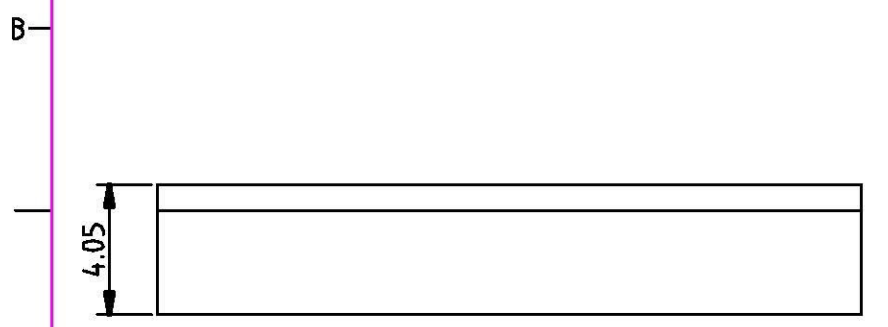
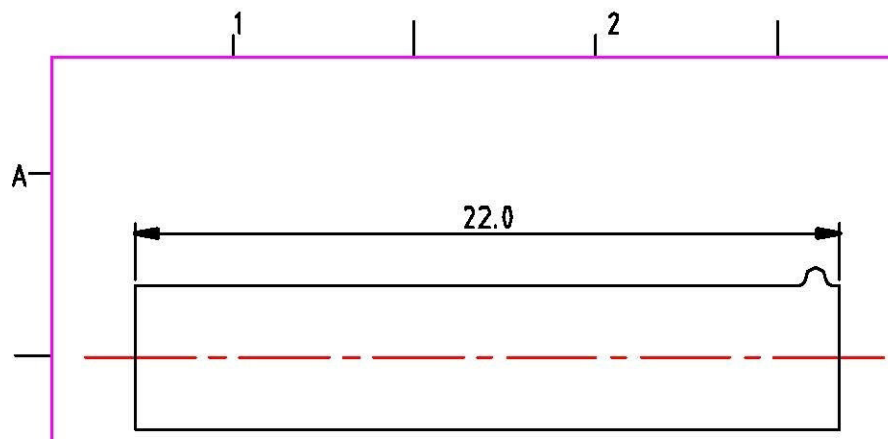


REV	ECN. NO.	APPD.
A	DC04-051	T.K MENG 8/7/2014

- NOTE:
1. DIMENSION SHALL BE INTERPRETED PER ANSI Y14.5M-1994
 2. ALL DIMENSIONS ARE IN MILLIMETER
 3. INSERTION FORCE: 0.5kgf MAX. PER CONTACT USING 0.50mm TEST PIN
WITHDRAWAL FORCE: 0.04kgf MIN. PER CONTACT USING 0.50mm TEST PIN
 - CONTACT RETENTION FORCE: 0.8kgf MIN. PER CONTACT
 4. MATERIAL:
CONTACT: PHOSPHOR BRONZE
HOUSING: THERMOPLASTIC, UL94V-0 RATED
 5. PROD. NO. LIST: G1-N-N-NN



CODE	DESCRIPTION	POSITIONS LOADED
11	1ST, 2ND, 3RD, 5TH, 6TH, 8TH AND 9TH	
12	1ST, 5TH, 6TH, 8TH AND 9TH	
13	1ST, 3RD, 5TH, 6TH, 8TH AND 9TH	
14	4TH, 5TH, 6TH, 8TH AND 9TH	
15	3RD, 5TH, 6TH, 8TH AND 9TH	

HOUSING, COLOR:

- R: RED
- W: WHITE
- U: BLUE
- B: BLACK
- G: GREEN
- Y: YELLOW

CONTACT PLATING:

- 0=100u" MIN TIN/LEAD PLATING OVER ALL
- 2= GOLD FLASH OVER ALL
- 8= 15u" GOLD

6. OPERATION TEMPERATURE : -55°C-105°C

X±	.X± 0.25	.XX± 1.21	NAME-INTENDED USE->	All Connectors
X°±	.X°±	.XX°±	JUMPER CONN	
UNITS:	mm	DATE: 8/1/2014	PART NO.-INTENDED USE->	TITLE:
MAT'L			G1 SERIES	CUSTOMER DRAWING
			APPD: T.K MENG	DWG NO.
			CHKD: GUDCHAO YAN	010-0002-301
			DR: TANG HAI QING	SCALE SHEET REV
				N/A 1/1 A