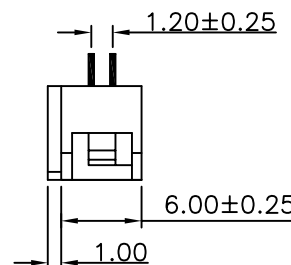
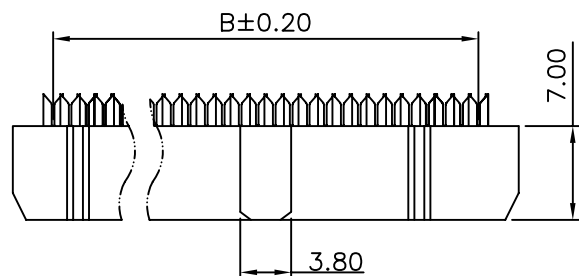
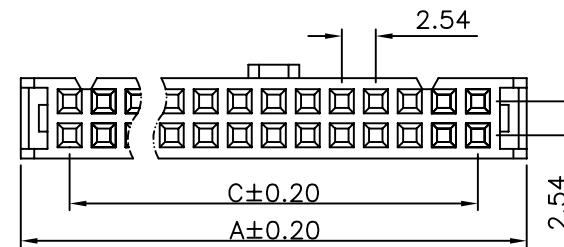
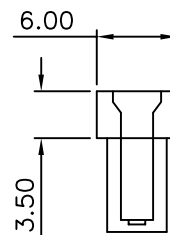
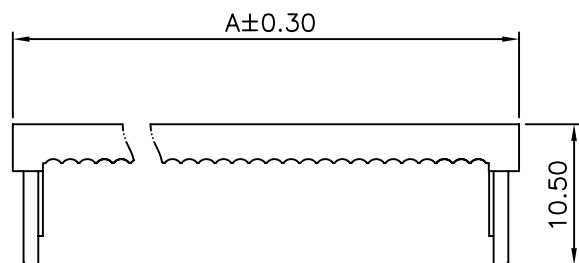


MATERIAL:
CONTACT: COPPER,GOLD AND TIN PLATED,
NICKEL UNDER PLATED.
HOUSING,COVER,LATCH:PBT BLACK UL94V-0.
All materials must be GP materials

RATING:
VOLTAGE:125V AC
CURRENT:0.5AMPERE
TEMPERATURE:-40°C TO 80°C.

3.TEST REQUIREMENT AND PROCEDURES SUMMARY:
ELECTRICAL:
TERMINATION RESISTANCE: 25m Ω MAX.
DIELECTRIC WITHSTANDING VOLTAGE:300 V AC.
INSULATION RESISTANCE: 5000MΩ (BEFORE TEST)
INSULATION RESISTANCE: 1000M (BEHIND TEST)
MECHANICAL:
MATING FORCE:1.67N MAX PER CONTACT.
UNMATING FORCE:0.14N MIN PER CONTACT.



PIN Q'TY	A	B	C
2*3	12.22	6.35	5.08
2*4	14.76	8.89	7.62
2*5	17.30	11.43	10.16
2*6	19.84	13.97	12.70
2*7	22.38	16.51	15.24
2*8	25.02	19.05	17.78
2*9	27.46	21.59	20.32
2*10	30.00	24.13	22.86
2*12	35.08	29.21	27.94
2*13	37.62	31.75	30.48
2*15	42.70	36.83	35.56
2*17	47.78	41.91	40.64
2*18	50.32	44.45	43.18
2*20	55.80	49.53	48.26
2*22	60.48	54.61	53.34
2*25	68.10	62.23	60.96
2*30	80.80	74.93	73.66
2*32	85.88	80.01	78.74


Ordering Information

IDCNF - X 1 X X

Pins Of Per Row
03~32

Select
W=With Strain Relief
WO=Without Strain Relief

COLOR
B=Black
XX=Select Color

GENERAL TOLERANCE	ANGLE TOLERANCE	DESIGN	DATE	 www.allconnectors.eu info@allconnectors.eu Tel. +49 (0)711 / 358 110 20 Fax +49 (0)711 / 358 110 25	
X. ± .X ±0.38 .XX ±0.25 .XXX ±0.13	X°. ±5° .X° ±2° .XX° ±1° .XXX° ±0.5°	CHECK	DATE		
UNIT:mm	SCALE 1:1	APPRO.	DATE	FILE NAME	2.54MM IDC
A4	SHEET: 1 of 1			PART NO	IDCNF-X1X
				DRAWING NO.	IDCNF-01
					REV.AO