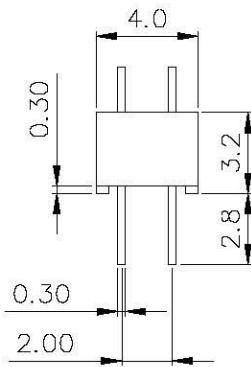
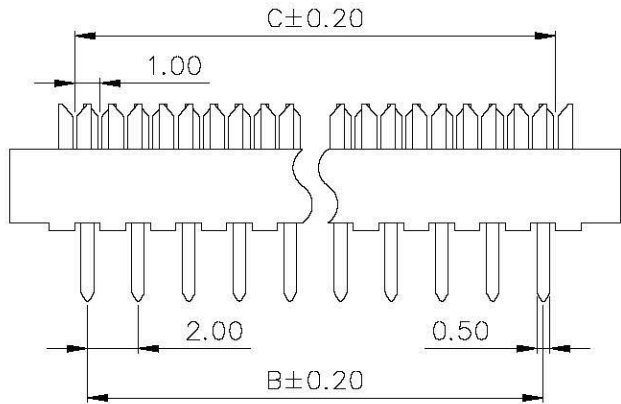
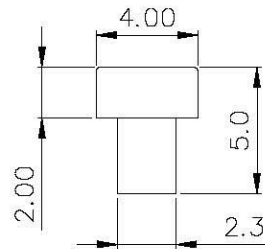
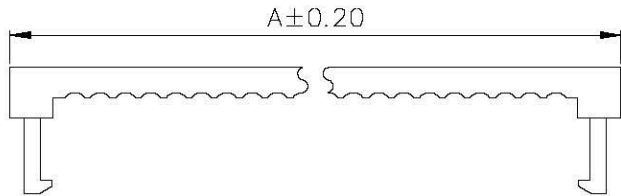


Material:
 Insulator: PBT+30% Glass Fiber (UL94V-0).
 Contact: Copper Alloy.
 Contact Plated: Gold or Tin over Nickel Plated.

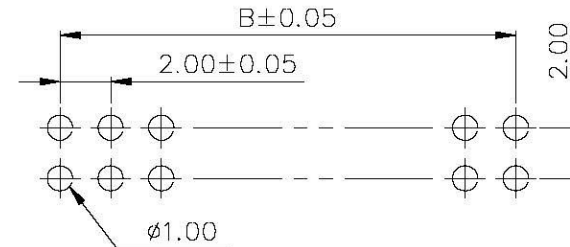
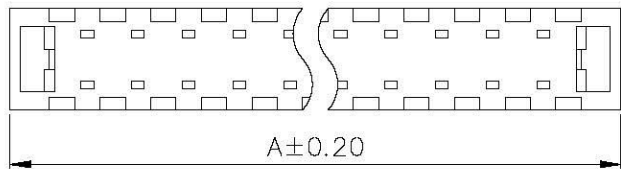
Specification:
 Current Rating: 1 Amp.
 Withstanding Voltage: AC 500V for 1 Minute.
 Insulation Resistance: 1000MΩ Min. at DC 500V.
 Contact Resistance: 15mΩ Max..
 Operating Temperature: -40°C ~ +105°C.

MIP-C2-xx-LF
 POSITION LEADFREE



Pos.	Dim. A	Dim. B	Dim. C
8	12.10	6.00	7.00
10	14.10	8.00	9.00
12	16.10	10.00	11.00
14	18.10	12.00	13.00
16	20.10	14.00	15.00
18	22.10	16.00	17.00
20	24.10	18.00	19.00
22	26.10	20.00	21.00
24	28.10	22.00	23.00
26	30.10	24.00	25.00
28	32.10	26.00	27.00
30	34.10	28.00	29.00
32	36.10	30.00	31.00
34	38.10	32.00	33.00

Pos.	Dim. A	Dim. B	Dim. C
36	40.10	34.00	35.00
38	42.10	36.00	37.00
40	44.10	38.00	39.00
42	46.10	40.00	41.00
44	48.10	42.00	43.00
46	50.10	44.00	45.00
48	52.10	46.00	47.00
50	54.10	48.00	49.00
52	56.10	50.00	51.00
54	58.10	52.00	53.00
56	60.10	54.00	55.00
58	62.10	56.00	57.00
60	64.10	58.00	59.00



RoHS Compliant

RECOMMEND P.C. BOARD LAYOUT

All Connectors

www.allconnectors.de
 Info@allconnectors.de
 70734 Filderstadt - Germany

PART NO. MIP-C2-xx

DWG NO. MIP-C2-xx

FILE NO.

UNIT / mm SCALE 1:1

CHECKED BY CY

DRAWING BY

PROJECTION

TOLERANCES ARE

.X ± 0.2
 .XX ±
 .XXX ±
 AWG

DESCRIPTION:		2.0mm Transition IDC Connector			
AREA	REVISIONS	HK	DATE		