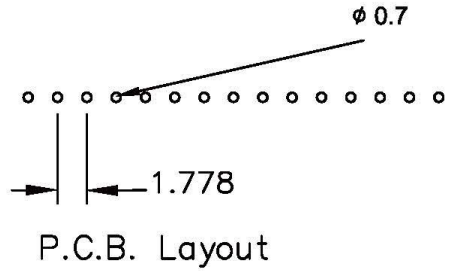
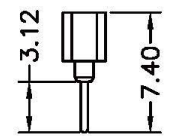
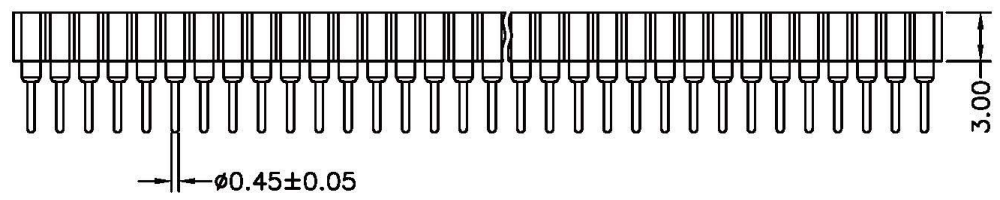
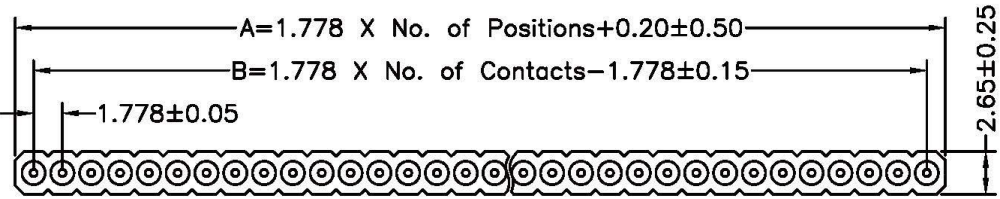


Technical Data



Material:
 Pin(outer sleeve): Brass,machined CuZn38Pb2
 Clip(contact 6 finger): Beryllium Copper,heat treated
 Plating(outer sleeve):
 Tin plated:2μm/80μ"Ni, 5μm/200μ"Sn
 Gold Plated:2μm/80μ"Ni,Full gold
 Plating(contact): 2μm/80μ"Ni, gold or Tin plated
 Insulator(black): Glass filled thermoplastic polyester
 UL94V-0

Electrical:
 Current rating: 3Amps/contact max.
 Contact resistance: $\leq 4m\Omega$ /contact
 Insulation resistance: $\geq 1000M\Omega$ at V=100V
 Operating voltage: 60VAC/DC

Mechanical:
 Average insertion force with steel pin of $\phi 0.43mm/0.17"$: <50g
 Average withdrawal force with steel pin of $\phi 0.43mm/0.17"$: >15g min.
 Mechanical life cycle:min.200
 Operating temperatures: Gold Plsted:-55°C to +105°C
 Tin plated:-40°C to +105°C
 Soldering temperature: +260°C,10s max.

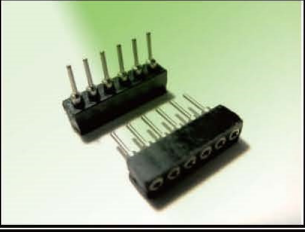
RoHS Compliant

All Connectors

www.allconnectors.de
 Tel.: 0049 711 7009503
 70794 Filderstadt - Germany

info@allconnectors.de
 Fax: 0049 711 7009504
 Kettnerstr. 25

DRAWING BY CY		TOLERANCES ARE X ± 0.25 .X ± 0.10 .XX ± .XXX ± ANG ±
CHECKED BY GENIUS		
UNIT / mm	SCALE 1 : 1	
DATE		
SIZE A4	PROJECTION	



ORDER INFORMATION

HISS-D-1Xxx-LF
 SERIES | DIP 180° | LEADFREE
 1X02:02WAY
 1X40:40WAY

DESCRIPTION: