

NOTES:

1.0 SPECIFICATIONS:

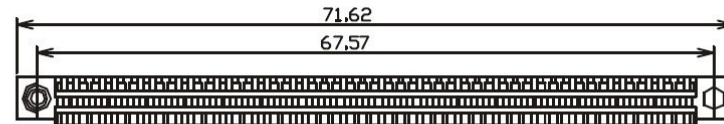
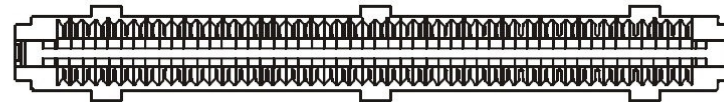
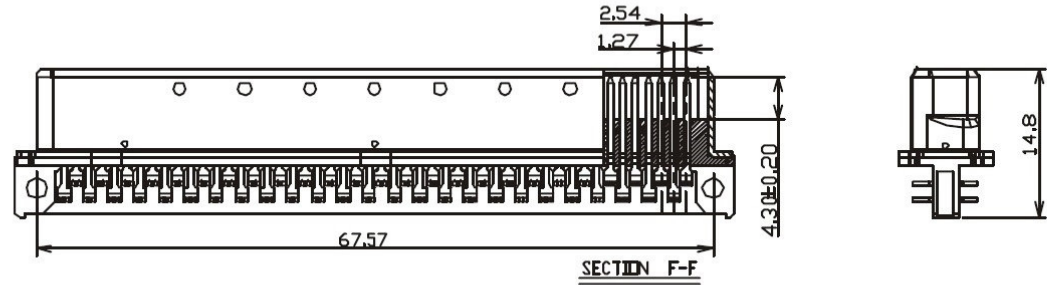
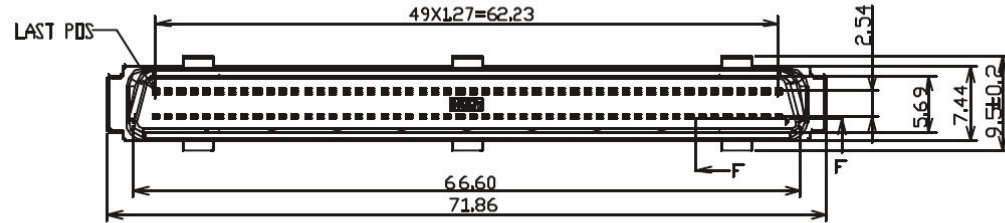
- 1.1 CONTACT CURRENT RATING: 1.0 AMPERES
- 1.2 DIELECTRIC WITHSTANDING VOLTAGE: AC 500 VOLTAGE R.M.S
- 1.3 HOUSING RESISTANCE: 1,000 MEGOHMS MINIMUM
- 1.4 CONTACT RESISTANCE: 35 MILLIOHMS MAXIMUM
- 1.5 OPERATING TEMPERATURE: -55°C TO +60°C
- 2.0 MATERIALS:
- 2.1 HOUSING: THERMOPLASTIC, GLASS-FIBER FILLED IN, UL 94V-0 RATED, COLOR TO BE BLACK
- 2.2 CONTACT: PHOSPHOR BRONZE
- 2.3 SHELL: STEEL
- 2.4 TERMINATION COVER: THERMOPLASTIC, GLASS-FIBER FILLED IN, UL 94V-0 RATED, COLOR TO BE BLACK

3.0 FINISH:

- 3.1 CONTACT: SELECTIVE GOLD PLATING
- 3.2 SHELL: NICKEL OVER COPPER

4.0 OTHERS:

- 4.1 RECOMMENDED WIRE: 26 AWG OR 28 AWG OR 30 AWG, SOLID OR 7 STRAND, WITH A INSULATION DIAMETER FROM 0.74-0.91 mm.
- 4.2 TERMINATING COVERS ARE PACKAGED SEPARATELY.



HPD-PI-100-LF
LEADFREE
RoHS Compliant

Allconnectors

www.allconnectors.de
Tel.: 0349 711 709503
70794 Filderstadt - Germany

Info@allconnectors.de
Fax: 0349 711 709504
Kettnerstr. 25

PART NO. HPD-PI-100

DWG NO. HPD-PI-100

FILE NO.

UNIT / mm

SCALE 1:1

CHECKED BY CY

DRAWING BY

PROJECTION

TOLERANCES ARE

- .X ± 0.2
- .XX ± 0.1
- .XXX ±
- AWG

DESCRIPTION:

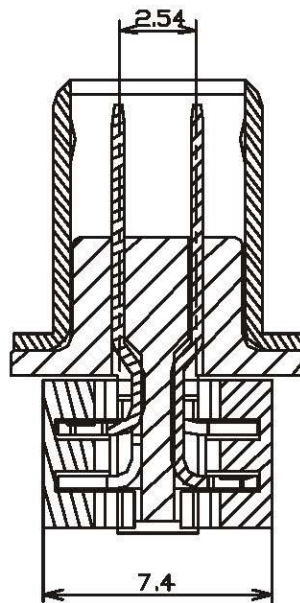
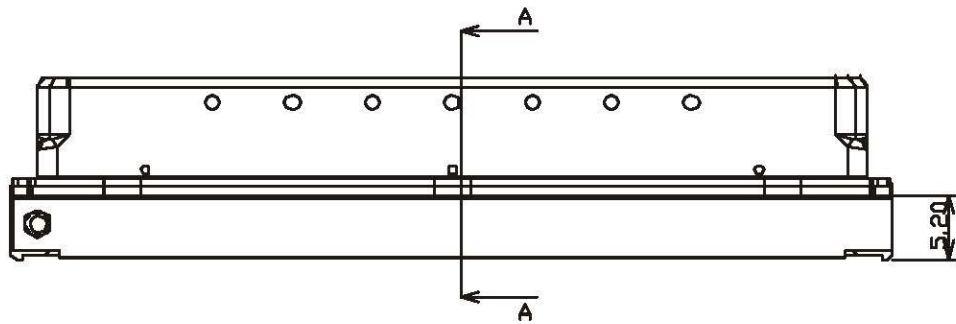
HALF-PITCH PIN TYPE SERIES,
100 POS. CABLE PLUG CONNECTOR

AREA

REVISIONS

HK

DATE



SECTION A-A
SCALE 5:1

DETAIL A (SCALE 10:1)

TYPE 1	TYPE 2
RECOMMENDATION USED ON 26028 AVG P/N: HPD-PI26-100	RECOMMENDATION USED ON 30 AVG P/N: HPD-PI30-100

Allconnectors

www.allconnectors.de
Tel.: 0049 711 7005503
70734 Filsterstadt - Germany

info@allconnectors.de
Fax: 0049 711 7005504
Kettenerstr. 25

PART NO. HPD-PI-100

DWG NO. HPD-PI-100

FILE NO.

UNIT / mm

SCALE 1:1

CHECKED BY CY

DRAWING BY

PROJECTION



TOLERANCES ARE

.X ± 0.2
.XX ± 0.1
.XXX ±
AWG

DESCRIPTION:

HALF-PITCH PIN TYPE SERIES,
100 PINS. PLUG CONNECTOR

AREA

REVISIONS

HK

DATE