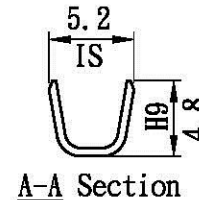
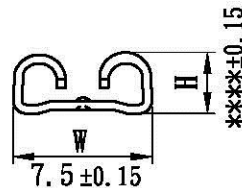
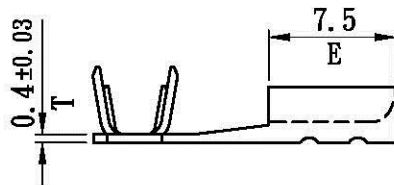
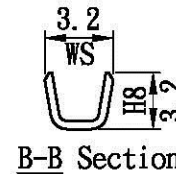
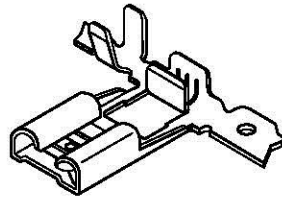
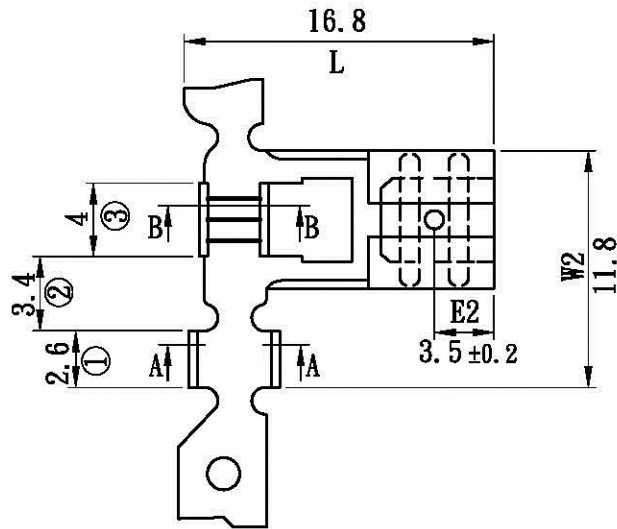


# 產品成品圖

Terminal(250 Flag Type)



品名	H	配合TAB
K70605BS-2	3.2	0.8Tx6.35W D60603BL-2#
K70605BS-2A	3.1	0.7Tx6.35W

鍍錫編號[Part No. (Tin-plated before press/forming)]:  
K70605BS-2  
K70605BS-2A

表面處理(Surface treatment):  
預鍍錫膜厚40 μ"以上  
(Pre-tin-plated thickness more than 40 μ")

適用電線(Applicable wire):  
AWG# 14-20

線皮外徑(Insulation O.D):  
3.8~1.5 mm

配合塑膠(Mates with housing):  
P70604M40K

包裝數量(Standard packing):  
2500 PCS

此產品須符合RoHS指令要求  
(The product must conform to the RoHS directive)

**Allconnectors**  
www.allconnectors.de info@allconnectors.de  
+49 (0)89 41 1339-14 +49 (0)89 41 1339-14  
70794 Filderstadt, Germany Gellertstr. 25

UL NO:	CSA NO:	TUV NO:	名稱(Name): 產品規格(Product specifications)			核發單位 (Issued by)	制定單位 (Instituted by)
			編號(Part No.): K70605BS系列				
			材質(Material): 黃銅[Brass]				
	增加配合端子	9	6-Jul-09	核 准 (Approved by)	審 查 (Confirmed by)	制 定 (Drawn by)	單位(Unit):mm 比例(Scale):Free
	規格整合	8	4-Sep-06				
	圖面格式更新, 整合	7	18-Feb-05				
記號 (Sign)	變更內容 (Change description)	版次 (Edition)	制修訂日期 (Drawn date)	韓曜安	韓曜安	黃莉雯	第三角法 (Projection): 一般公差 (General tolerance): ±0.3