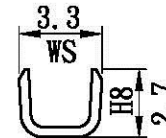
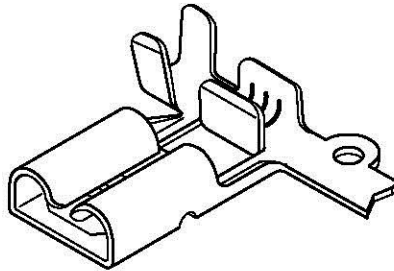
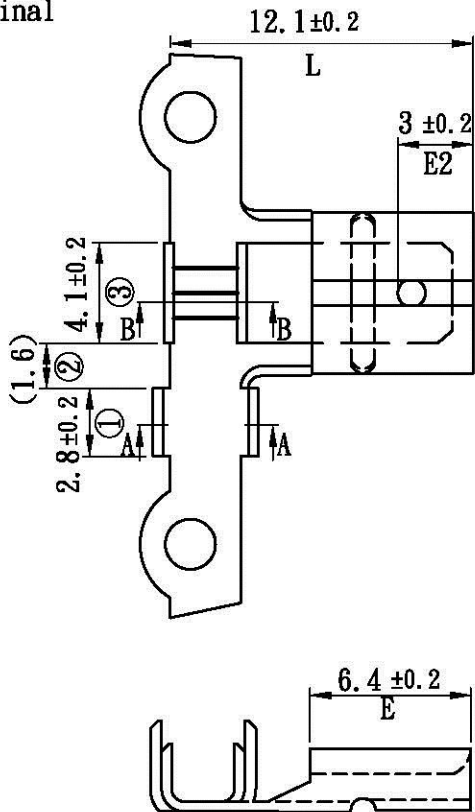
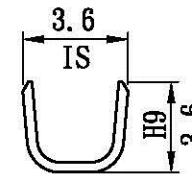
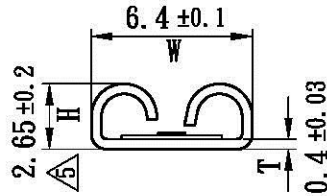
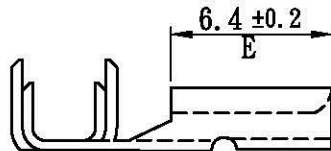


產品成品圖

Terminal



B-B Section



A-A Section

鍍錫編號[Part No. (Tin-plated before press/forming)]:K70502BS-2

表面處理(Surface treatment):
預鍍錫膜厚 $40\ \mu$ "以上
(Pre-tin-plated thickness more than $40\ \mu$ ")

適用電線(Applicable wire):
AWG# 14-18

線皮外徑(Insulation O.D):
3.6-2.9 mm

對手件(Mating part):
0.6mm TAB

包裝數量(Standard packing):
5000 PCS

此產品須符合RoHS指令要求
(The product must conform to the RoHS directive)

威力盛精工股份有限公司



WELI SHENG INDUSTRIAL CO., LTD.

UL NO:	CSA NO:	TUV NO:	名稱(Name): 產品規格(Product specifications)			核發單位 (Issued by)	制定單位 (Instituted by)
			編號(Part No.): K70502BS			部品部 2009.07.08 核發	開發課 2009.07.06 制定
			材質(Material): 黃銅[Brass]				
	修改H尺寸, 圖面格式更新	6	6-Jul-09	核准 (Approved by)	審查 (Confirmed by)	制定 (Drawn by)	單位(Unit):mm 比例(Scale):Free
		1	2-Apr-93				
記號 (Sign)	變更內容 (Change description)	版次 (Edition)	制修訂日期 (Drawn date)	韓曜安	韓曜安	陳敏伶	第三角法 (Projection): 一般公差 (General tolerance): ± 0.3