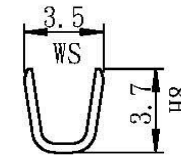
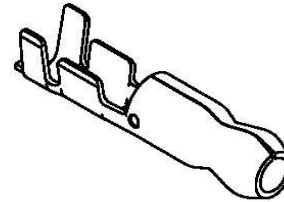
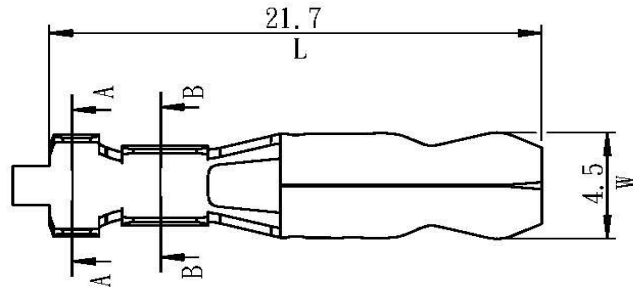
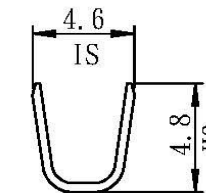
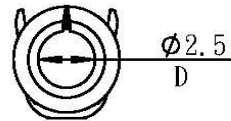
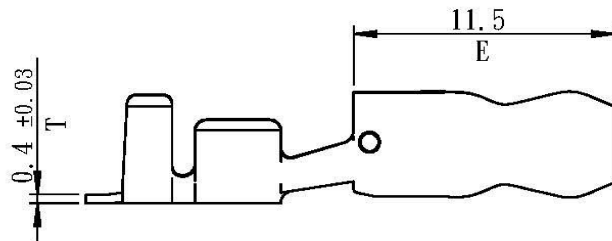


產品成品圖

Terminal



B-B Section



A-A Section

鍍錫編號[Part No.(Tin-plated after press/forming)]:
A00410BS-2#

表面處理(Surface treatment):
鍍錫膜厚 $40\mu''$ 以上
(Tin-plated thickness more than $40\mu''$)

適用電線(Applicable wire):
 $0.5\sim 2.0\text{mm}^2$

配合端子(Mates with terminal):
A10410BS-2#

包裝數量(Standard packing):
7500 PCS

此產品須符合RoHS指令要求
(The product must conform to the RoHS directive)

副本

All Connectors

www.allconnectors.de
Tel.: 0049 711 7005303
70794 Ellersdorf Germany

info@allconnectors.de
Fax: 0049 711 7009504
Kottbusstr. 25

UL No. :	CSA No. :	TUV No. :	名稱(Name): 產品規格(Product specifications):			核發單位 (Issued by)	制定單位 (Instituted by)
			編號(Part No.): A00410BS				
			材質(Material): 黃銅[Brass]				
			核 准 (Approved by)	審 查 (Confirmed by)	制 定 (Drawn by)	單位(Unit): mm	比例(Scale): Free
		1	3-Jan-08			第三角法 (Projection): 	一般公差 (General tolerance): ± 0.3
記號 (Sign)	變更內容 (Chang description)	版次 (Edition)	制定日期 (Drawn date)	韓曜安	蔡幸蕙		