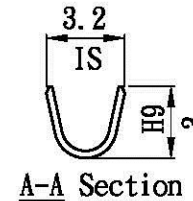
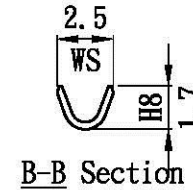
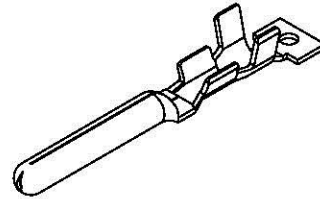
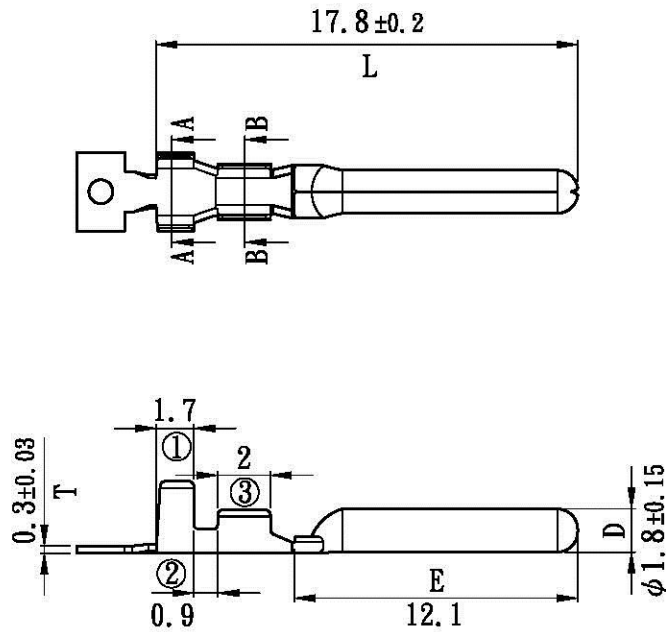


# 產品成品圖

Terminal



表面處理(Surface treatment):  
預鍍鎳膜厚30 μ" 以上  
(Pre-tin-plated nickel  
more than 30 μ")

適用電線(Applicable wire):  
AWG# 20-24

線皮外徑(Insulation O.D):  
1.8-1.5 mm

對手件(Mating part):  
A10109BS-1

包裝數量(Standard packing):  
10000 PCS

此產品須符合RoHS指令要求  
(The product must conform to  
the RoHS directive)

All Connectors

www.allconnectors.de  
Tel: +0049 711 2009501  
70794 Filberstadt - Germany

Info@allconnectors.de  
Fax: +0049 711 2009501  
Karte mestr. 25

|              |                              |                 |  |                       |                   |                         |                                      |
|--------------|------------------------------|-----------------|--|-----------------------|-------------------|-------------------------|--------------------------------------|
| UL NO:       | CSA NO:                      | TUV NO:         | 名稱(Name): 產品規格(Product specifications) |                       |                   | 核發單位<br>(Issued by)     | 制定單位<br>(Instituted by)              |
|              |                              |                 | 編號(Part No.): A00125BS-1               |                       |                   | 部品部<br>2008.09.25<br>核發 | 開發課<br>2008.09.25<br>制定              |
|              |                              |                 | 材質(Material): 黃銅[Brass]                |                       |                   |                         |                                      |
|              |                              |                 | 核 准<br>(Approved by)                   | 審 查<br>(Confirmed by) | 制 定<br>(Drawn by) | 單位(Unit):mm             | 比例(Scale):Free                       |
|              |                              | 1               | 25-Sep-08                              | 韓曜安                   | 韓曜安               | 黃莉雯                     | 第三角法<br>(Projection):<br>            |
| 記號<br>(Sign) | 變更內容<br>(Change description) | 版次<br>(Edition) | 制修訂日期<br>(Drawn date)                  |                       |                   |                         | 一般公差<br>(General tolerance):<br>±0.3 |