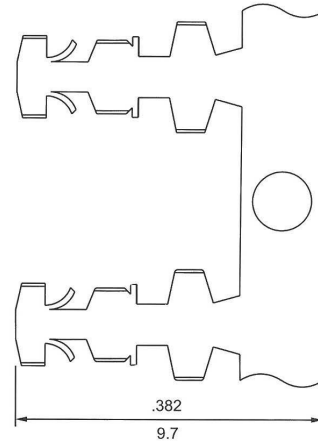


## Standard-Alone Board-In Crimp Terminal

### 5802T Series P.C. Board Crimp Terminal

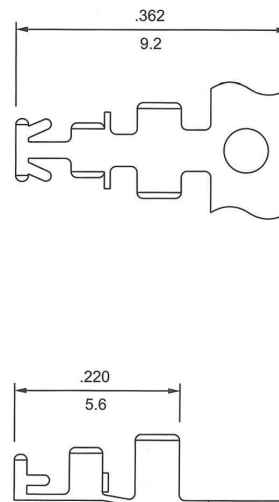
- Secures wire to P.C.B. before wave soldering
- Rapid and economical means of hand wiring P.C.B.
- Wire solders directly to P.C.B.
- No additional contact resistance
- Low profile
- Material: Phosphor bronze
- Finished: Tin-plated
- Thickness: 0.2mm
- Wire range: #18 ~ #22 AWG
- A max. protrusion below the P.C. Board of 2.2mm
- Recommended P.C.B. hole diameter  $\varnothing 1.8^{+0.1}_{-0}$  mm
- Applicable P.C.B. thickness: 1.57mm



inches  
mm

### 5820T Series P.C. Board Crimp Terminal

- Secures wire to P.C.B. before wave soldering
- Rapid and economical means of hand wiring P.C.B.
- Wire solders directly to P.C.B.
- No additional contact resistance
- Low profile
- Material: Phosphor bronze
- Finished: Tin-plated
- Thickness: 0.2mm
- Wire range: #22 ~ #24 AWG
- Recommended P.C.B. hole diameter  $\varnothing 1.6^{+0.05}_{-0}$  mm
- Applicable P.C.B. thickness: 1.57mm



inches  
mm