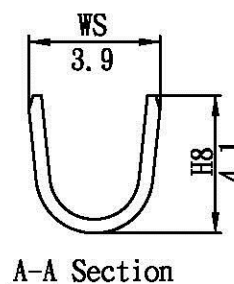
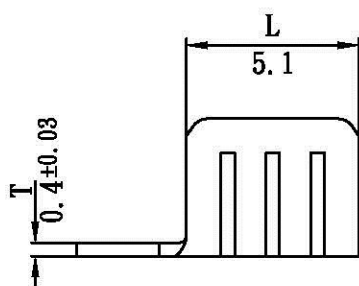
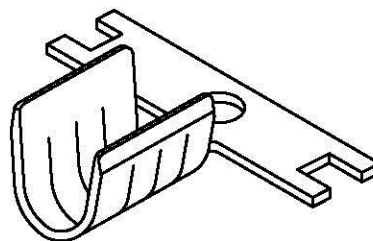
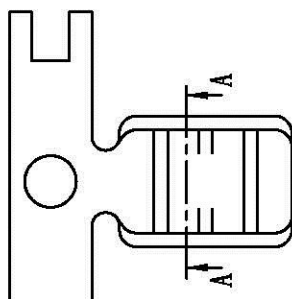


產品成品圖

Terminal



鍍錫編號[Part No. (Tin-plated before press/forming)]:G10404BS-2

表面處理(Surface treatment):
預鍍錫膜厚40 μ"以上
(Pre-tin-plated thickness more than 40 μ")

適用電線(Applicable wire):
AWG# 14-18

包裝數量(Standard packing):
1000 PCS

All Connectors

www.allconnectors.de
Tel.: 0049 711 2009503
20724 Hildersbach - Germany

info@allconnectors.de
Fax: 0049 711 2009504
Kardenerstr. 23

UL NO:	CSA NO:	TUV NO:	名稱(Name): 產品規格(Product specifications)			核發單位 (Issued by)	制定單位 (Instituted by)	
			編號(Part No.): G10404BS					
			材質(Material): 黃銅[Brass]					
			核 准 (Approved by)	審 查 (Confirmed by)	制 定 (Drawn by)	單位(Unit):mm	比例(Scale):Free	
		1	94.06.24	陳文進	高宏明	陳敏伶	第三角法 (Projection): 	一般公差 (General tolerance): ±0.3
記號 (Sign)	變更內容 (Change description)	版次 (Edition)	制修訂日期 (Drawn date)					