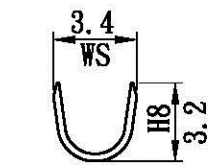
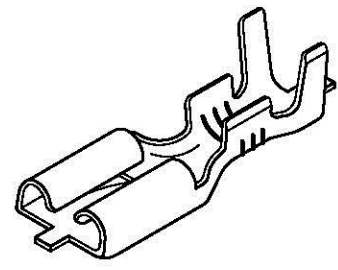
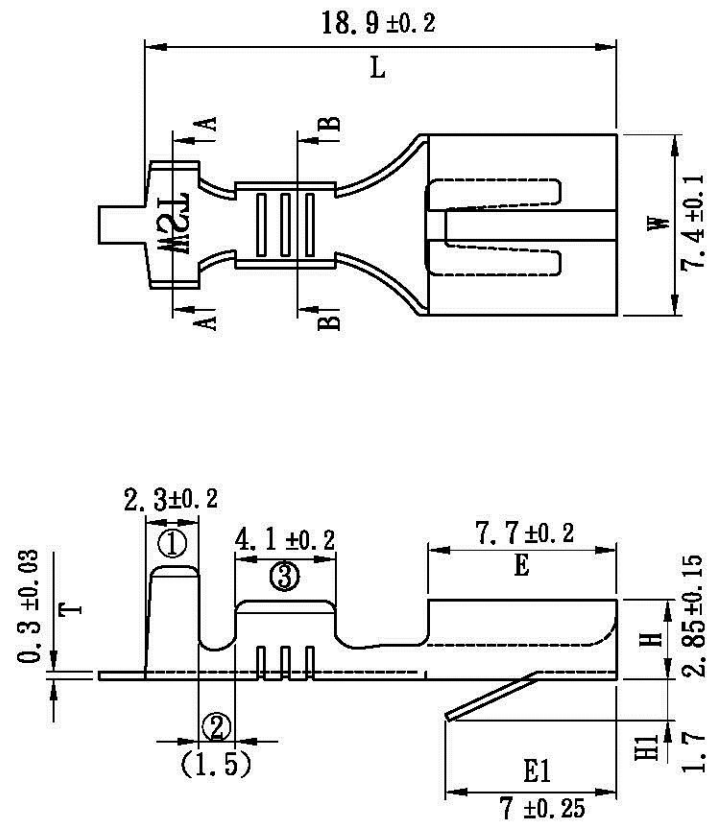
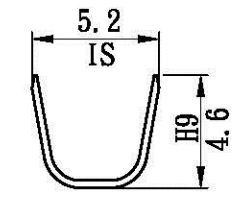


Terminal(250 Type)



B-B Section



A-A Section

鍍錫編號[Part No. (Tin-plated before press/forming)]:D70601BS(BL)-2

表面處理(Surface treatment):  
預鍍錫膜厚40 μ"以上  
(Pre-tin-plated thickness more than 40 μ")

適用電線(Applicable wire):  
AWG# 14-18

線皮外徑(Insulation O.D):  
3.6-2.9 mm

配合端子(Mates with terminal):  
D60601BS

配合塑膠(Mates with housing):  
PPK#-D70601, PPKH#-D70601系列

包裝數量(Standard packing):  
5000 PCS

此產品須符合RoHS指令要求  
(The product must conform to the RoHS directive)

**All Connectors**  
www.allconnectors.de info@allconnectors.de  
Tel.: 0049 711 7009500 Fax: 0049 711 7009504  
70791 Filderstadt - Germany Kettnerstr. 25

UL NO:		CSA NO:		TUV NO:		名稱(Name): 產品規格(Product specifications)			核發單位 (Issued by)	制定單位 (Instituted by)
						編號(Part No.): D70601BS(BL)			部品部 2010.10.22 核發	開發課 2010.10.21 制定
						材質(Material): 黃銅[Brass]				
⚠	圖面格式更新	9	20-Oct-2010	核准 (Approved by)	審查 (Confirmed by)	制定 (Drawn by)	單位(Unit):mm		比例(Scale):Free	
		1	15-Jun-1992							
記號 (Sign)	變更內容 (Change description)	版次 (Edition)	制修訂日期 (Drawn date)	高宏明	許仁義	陳敏伶	第三角法 (Projection): 		一般公差 (General tolerance): ±0.3	