

# 7.0mm .276" Center Crimp Terminal

AllConnectors

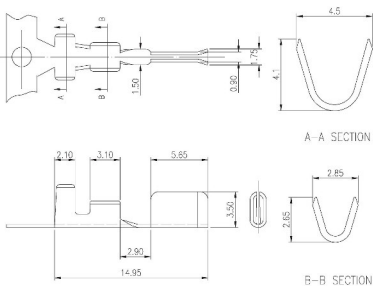
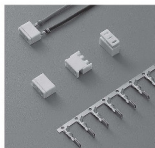
www.allconnectors.de  
Tel.: 0049 711 700958  
90794 Hilbertshausen, Germany

info@allconnectors.de  
Fax: 0049 711 700954  
Kathement, IS

## 1100 Series

### ■ TERMINAL

- Part No.: 1100-B
- Material: Brass
- Thickness: 0.3mm
- Plating: None
- Wire Range: Suitable for AWG#18~20
- Insulation O.D.: 3.2mm (max)
- Q'TY: 5,000 pcs/reel
- Accepts housing : 1100-H



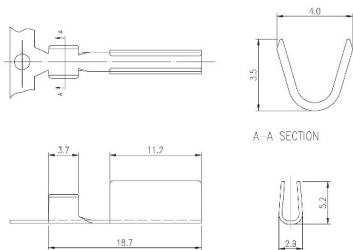
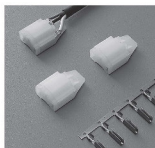
### Ordering Information

Part No.	Wire Range	Insulation O.D.	Material	Finish	Q'ty/reel	Note
1100-B	AWG #18~#20	3.2mm (max)	Brass	None	5,000 pcs	

## 1250 Series

### ■ TERMINAL

- Part No.: 1250-B · 1250-P
- Material: Brass or Phos. bronze
- Thickness: 0.4mm
- Plating: None
- Wire Range: Suitable for AWG#18~20
- Q'TY: 4,000 pcs/roll
- Accepts housing : 1250-H



### Ordering Information

Part No.	Wire Range	Wire O.D.	Material	Finish	Q'ty/reel	Note
1250-B	AWG #18~#20	3.2mm (max)	Brass	None	4,000 pcs	
1250-P	AWG #18~#20	3.2mm (max)	Phos. bronze	None	4,000 pcs	