

C6351 SERIES

6.35mm pitch wire to wire and wire to board connector

C6351WW-R

6.35mm pitch 180° Single Row Wafer, Round Pin-MALE TYPE

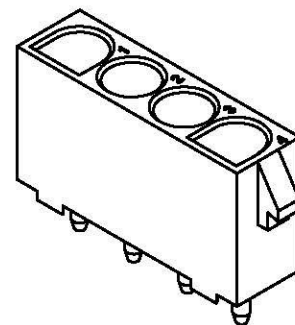
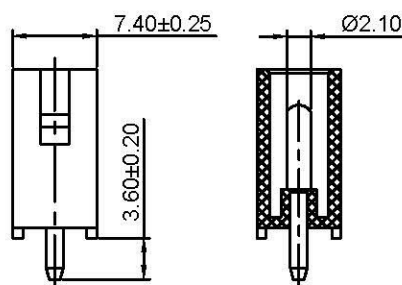
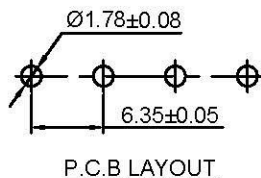
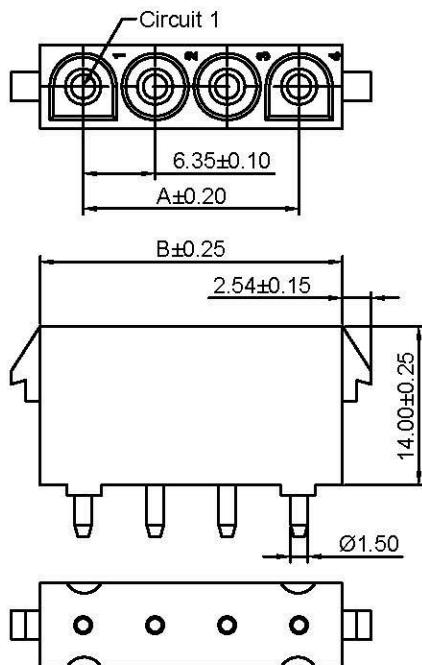
Reference Informations:

- *Material: Pin: Brass/Silver over Nickel
Insulator: Nylon 66, UL94V-2 or UL94V-0
- *Mates with C6351HF series single row Housing
- *Color: Natural

Ordering Information:

C6351WW-XP-R - **
1 2

1. Part No.
2. Material:
(blank): UL94V-2 / Natural
V0: UL94V-0 / White



Ordering Information & Dimensions:

PART NO.	Dimensions	
	A	B
C6351WW-2P-R	6.35	13.97
C6351WW-3P-R	12.70	20.32
C6351WW-4P-R	19.05	26.67
C6351WW-5P-R	25.40	33.02
C6351WW-6P-R	31.75	39.37
C6351WW-7P-R	38.10	45.72
C6351WW-8P-R	44.45	52.07
C6351WW-9P-R	50.80	58.42
C6351WW-10P-R	57.15	64.77

Unit: mm

C6351WW-F-M

6.35mm pitch 180° Single Row Wafer Polarizing Peg-MALE TYPE

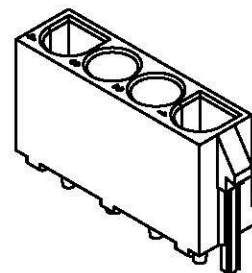
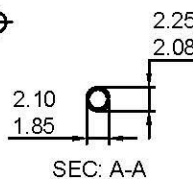
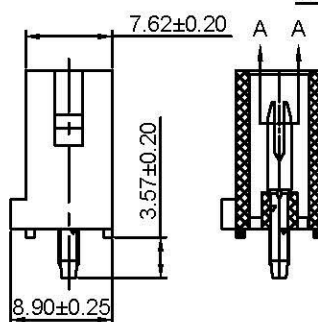
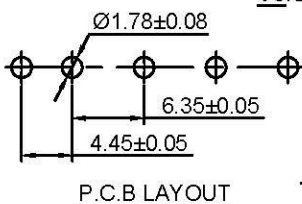
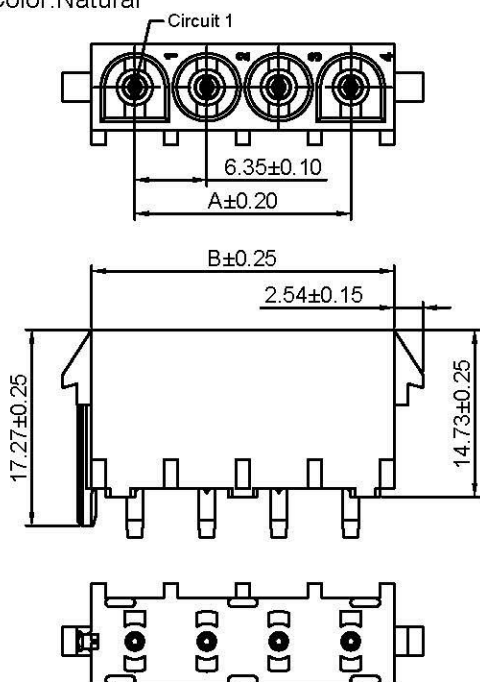
Reference Informations:

- *Material: Pin: Brass/Tin over Nickel
Insulator: Nylon 66, UL94V-2 or UL94V-0
- *Mates with C6351HF series single row Housing
- *Color: Natural

Ordering Information:

C6351WW-F-XP-M - **
1 2

1. Part No.
2. Material:
(blank): UL94V-2 / Natural
V0: UL94V-0 / White



Ordering Information & Dimensions:

PART NO.	Dimensions	
	A	B
C6351WW-F-2P-M	6.35	13.97
C6351WW-F-3P-M	12.70	20.32
C6351WW-F-4P-M	19.05	26.67
C6351WW-F-5P-M	25.40	33.02
C6351WW-F-6P-M	31.75	39.37
C6351WW-F-7P-M	38.10	45.72
C6351WW-F-8P-M	44.45	52.07
C6351WW-F-9P-M	50.80	58.42
C6351WW-F-10P-M	57.15	64.77

Unit: mm