

C6351 SERIES

6.35mm pitch wire to wire and wire to board connector

C6351WV-M

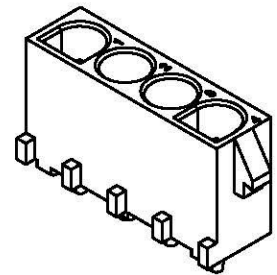
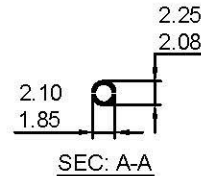
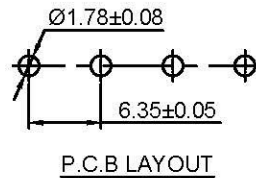
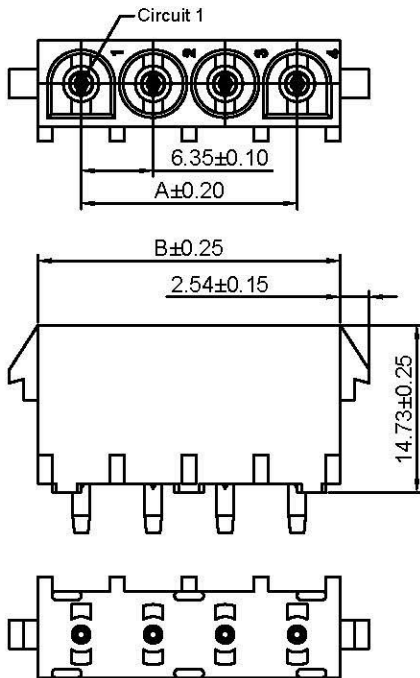
6.35mm pitch 180° Single Row Wafer-MALE TYPE

Reference Informations:

- *Material: Pin: Brass/Tin over Nickel
Insulator: Nylon 66, UL94V-2 or UL94V-0
- *Mates with C6351HF series single row Housing
- *Color: Natural

Ordering Information:
C6351WV-XP-M - **

1. Part No.
2. Material:
(blank): UL94V-2 / Natural
V0: UL94V-0 / White



Ordering Information & Dimensions:

PART NO.	Dimensions	
	A	B
C6351WV-2P-M	6.35	13.97
C6351WV-3P-M	12.70	20.32
C6351WV-4P-M	19.05	26.67
C6351WV-5P-M	25.40	33.02
C6351WV-6P-M	31.75	39.37
C6351WV-7P-M	38.10	45.72
C6351WV-8P-M	44.45	52.07
C6351WV-9P-M	31.75	58.42
C6351WV-10P-M	44.45	64.77

Unit: mm

C6351WV-F

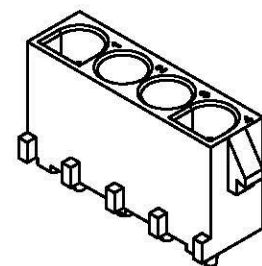
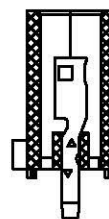
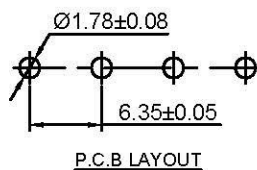
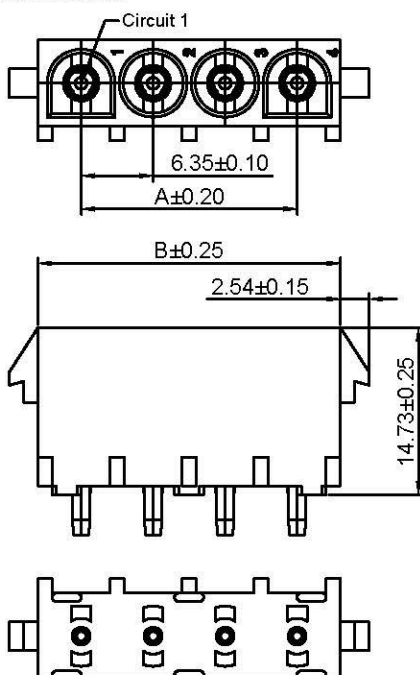
6.35mm pitch 180° Single Row Wafer-Female Type

Reference Informations:

- *Material: Pin: Brass/Tin over Nickel
Insulator: Nylon 66, UL94V-2 or UL94V-0
- *Mates with C6351HF series single row Housing
- *Color: Natural

Ordering Information:
C6351WV-XP-F - **

1. Part No.
2. Material:
(blank): UL94V-2 / Natural
V0: UL94V-0 / White



Ordering Information & Dimensions:

PART NO.	Dimensions	
	A	B
C6351WV-2P-F	6.35	13.97
C6351WV-3P-F	12.70	20.32
C6351WV-4P-F	19.05	26.67
C6351WV-5P-F	25.40	33.02
C6351WV-6P-F	31.75	39.37
C6351WV-7P-F	38.10	45.72
C6351WV-8P-F	44.45	52.07
C6351WV-9P-F	50.80	58.42
C6351WV-10P-F	57.15	64.77

Unit: mm