

Specifications

Material & Finish

Housing Material: Nylon UL94V-2

Plating:

Contacts: Copper alloy/Under plating : Nickel (50u")Min.

Over plating : Tin alloy (100? ")Min.

Mating Force : 6.7 N Max.

Unmating Force : 1 N min.

Normal Force : 3.4 N g.

Electrical Performance:

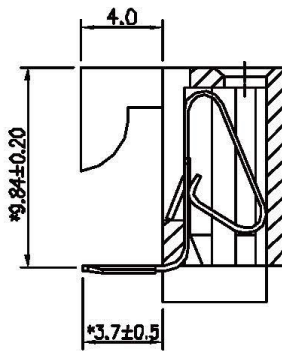
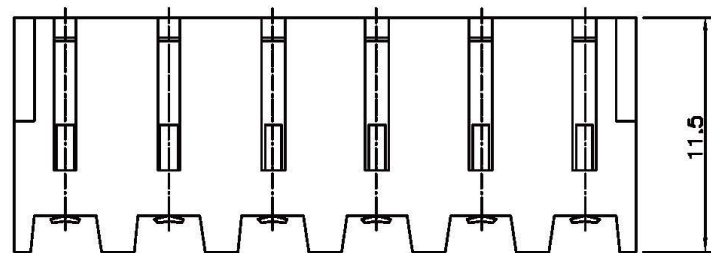
CURRENT-max. : 7.0A

VOLTAGE-max. : 250V

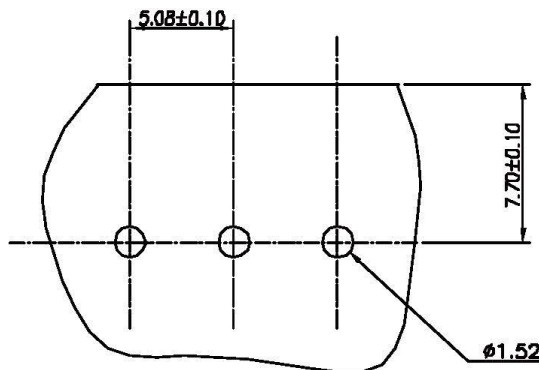
WITHSTANDING VOLTAGE : 1500V

INSULATION RESISTANCE : 500K Megohms min.

TEMPERATURE RANGE : -40° to +105°C



SEC:N-N



RECOMMENDED PCB LAYOUT

CIRCUITS	DIM. A	DIM. B
2	5.08±0.10	10.16±0.15
3	10.16±0.10	15.24±0.15
4	15.24±0.10	20.32±0.15
5	20.32±0.10	25.40±0.15
6	25.40±0.10	30.48±0.20
7	30.48±0.20	35.56±0.20
8	35.56±0.20	40.64±0.20
9	40.64±0.20	45.72±0.20
10	45.72±0.20	50.80±0.25
11	50.80±0.20	55.88±0.25
12	55.88±0.25	60.96±0.25
13	60.96±0.25	66.04±0.30
14	66.04±0.25	71.12±0.30
15	71.12±0.25	76.20±0.30
16	76.20±0.25	81.28±0.30
17	81.28±0.30	86.36±0.30
18	86.36±0.30	91.44±0.30
19	91.44±0.30	96.52±0.30
20	96.52±0.30	101.60±0.30

All Connectors

www.allconnectors.de
Tel.: 0049 711 7009503
70794 Filderstadt - Germany

info@allconnectors.de
Fax: 0049 711 7009504
Kettenerstr. 25

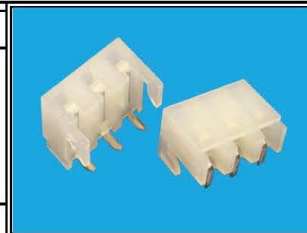
RoHS Compliant

DRAWING BY CY
CHECKED BY GENIUS
UNIT / mm SCALE 1 : 1
DATE
SIZE A4

TOLERANCES ARE

X ±
.X ± 0.20
.XX ± 0.10
.XXX ±
ANG ±

P PROJECTION



ORDER INFORMATION



DESCRIPTION: RIGHT ANGLE TYPE FOR 5.08MM PITCH FEMALE CONN.