

Note:

- Material: Insulator: See note 2  
Terminal: Copper alloy
- Contact:  
5011TCBTVA\* :  
Tin Plated 120 u" over Ni 30 u" min  
5011TCBSVA\* :  
Silver Plated 80~120 u" over Ni 30 u" min

Ordering Information:

5011P <sup>\*\*</sup> V <sup>\*</sup> <sup>\*\*</sup> <sup>\*\*</sup>  
1 2 3 4

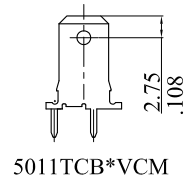
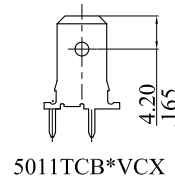
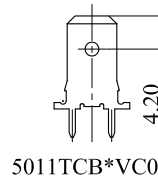
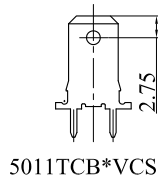
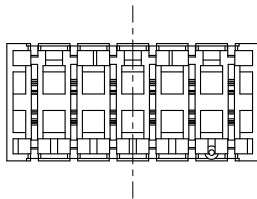
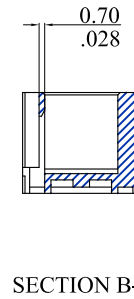
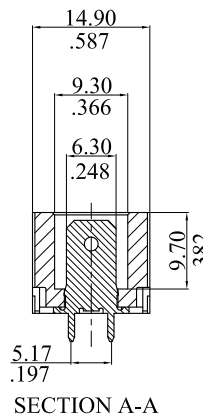
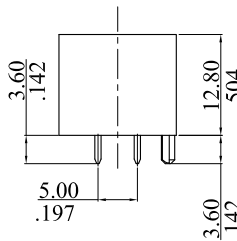
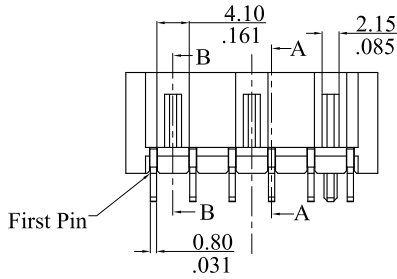
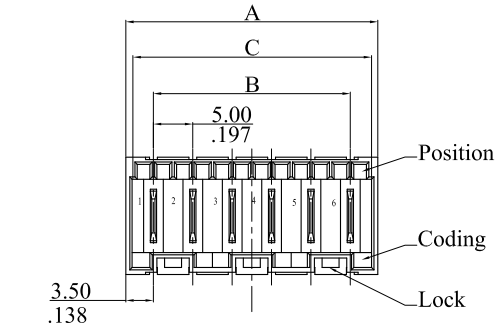
- No. of circuits
- Material for plastic:  
V=Insulator: PA66+30% G/F UL94V-0
- Terminal:  
T=Assemble terminal 5011TCBTVCO  
S=Assemble terminal 5011TCBTVCS  
X=Assemble terminal 5011TCBTVCX  
V=Assemble terminal 5011TCBTVCX  
With special layout  
M=Assemble terminal 5011TCBTVCM

Color: Nature

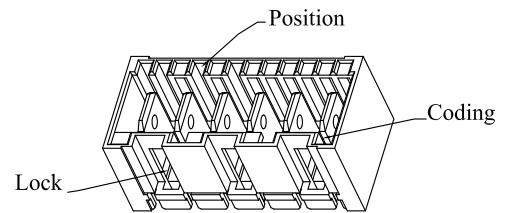
- P=Assemble terminal 5011TCBSVCO  
Q=Assemble terminal 5011TCBSVCS  
Y=Assemble terminal 5011TCBSVCX  
W=Assemble terminal 5011TCBSVCX  
With special layout  
N=Assemble terminal 5011TCBSVCM

4. See the Table of next page.

RoHS COMPLIANT



12	62.0(2.441)	55.0(2.165)	60.2(2.370)
11	57.0(2.244)	50.0(1.969)	55.2(2.173)
10	52.0(2.047)	45.0(1.712)	50.2(1.975)
9	47.0(1.850)	40.0(1.575)	45.2(1.780)
8	42.0(1.654)	35.0(1.378)	40.2(1.583)
7	37.0(1.457)	30.0(1.181)	35.2(1.386)
6	32.0(1.260)	25.0(.984)	30.2(1.189)
5	27.0(1.063)	20.0(.787)	25.2(.992)
4	22.0(.886)	15.0(.591)	20.2(.795)
3	17.0(.669)	10.0(.394)	15.2(.598)
2	12.0(.472)	5.0(.197)	10.2(.402)
CIRCUITS	DIM.A	DIM.B	DIM.C



F	ES101253	 <a href="http://www.allconnectors.eu">www.allconnectors.eu</a>   <a href="mailto:info@allconnectors.eu">info@allconnectors.eu</a> Tel. +49 (0)711 / 358 110 20   Fax +49 (0)711 / 358 110 25		APPROVED:	PART NO.:				
E	ES101238			DATE:	5011P**V***				
D	ES100717			CHECKED:	TITLE:				
C	ES060306			DATE:	Wafer				
A	DWG REL	GENERAL TOLERANCES: (UNLESS SPECIFIED)		DRAWN:	DRAWING NO.:				
REV.	ECO. NO.	CHG.	APP.	DATE:	501102S				
					UNITS	SCALE	SIZE	SHEET	REV.
					mm inch	1:1	A4	1/5	F
				ANGULAR ± ( 1° )					

\* See from top side

RoHS COMPLIANT

TYPE	0A	0B	0C	0D	0E	0F	0G	0H	0I	0K	0L	0M	0N
KEY/LOCK 2-way													

0P	0Q	0R	0S	0T	0U	0X	0Z	09	10	11	48	80	86

TYPE	0A	0B	0C	0D	0E	0F	0G	0H	0I	0K	0L
KEY/LOCK 3-way											

0M	0N	0Q	0W	02	03	04	05	10	12	13

1A	2N	2P	32	38	40	44	53	65	80	81

98

TYPE	0A	0B	0C	0D	0E	0F	0G	0H	0I
KEY/LOCK 4-way									

0J	0K	0L	0M	0W	01	02	03	04

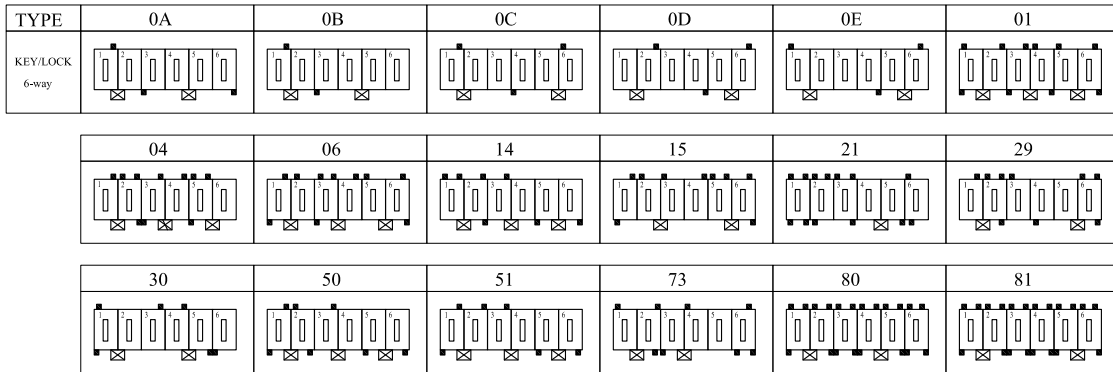
05	06	17	19	37	43	63	65	80

81	82	84	86	GA(Green)	PA	PB

F	ES101253			 www.allconnectors.eu   info@allconnectors.eu Tel. +49 (0)711 / 358 110 20   Fax +49 (0)711 / 358 110 25  GENERAL TOLERANCES: (UNLESS SPECIFIED)	APPROVED:	PART NO.:			
E	ES101238				DATE:	5011P**V***			
D	ES100717				CHECKED:	TITLE:			
C	ES060306				DATE:	Wafer			
A	DWG REL				DRAWN:	DRAWING NO.:			
REV.	ECO. NO.	CHG.	APP.		DATE:	501102S			
				 ANGULAR ± ( 1° )	UNITS  mm / inch	SCALE	SIZE	SHEET	REV.
						1:1	A4	2/5	F

\* See from top side

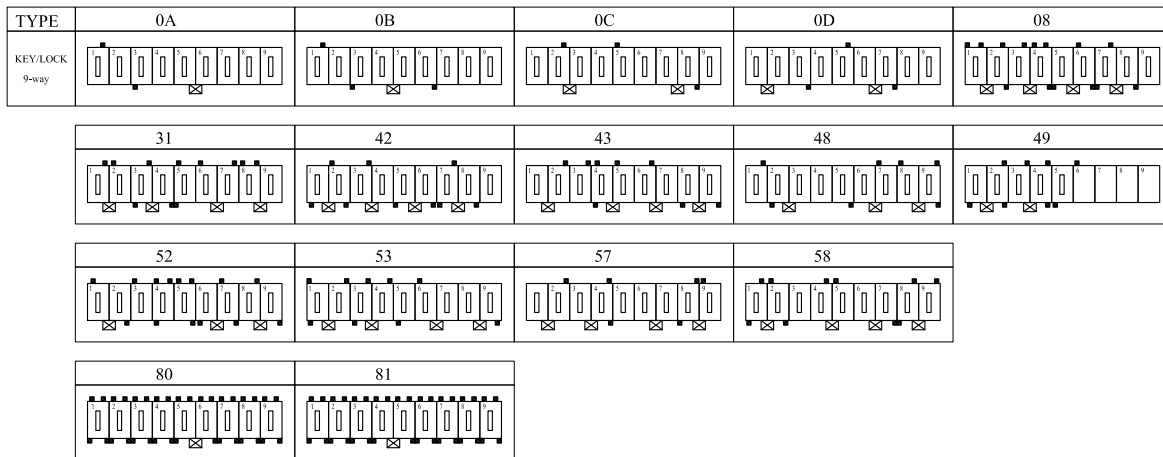
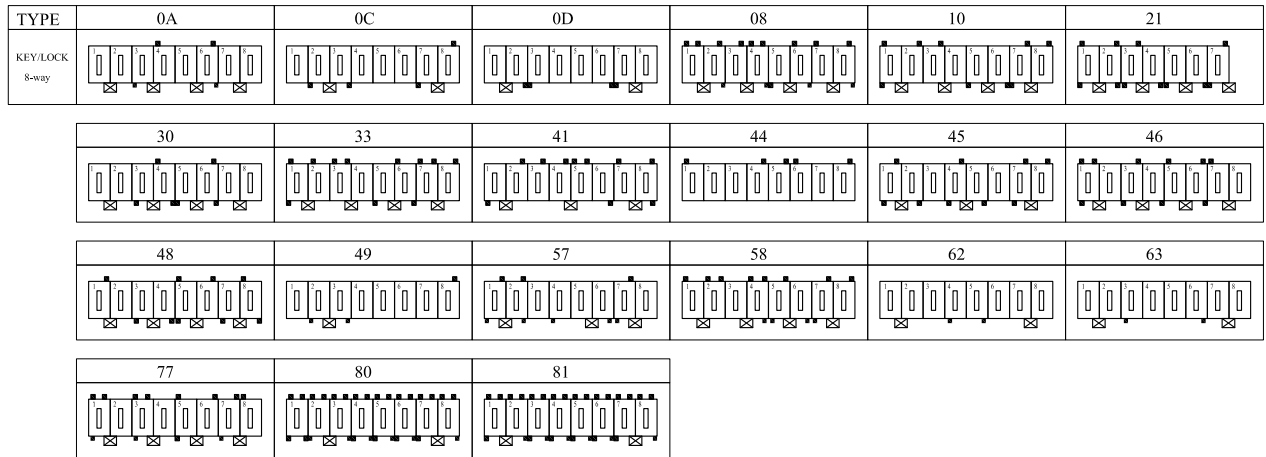
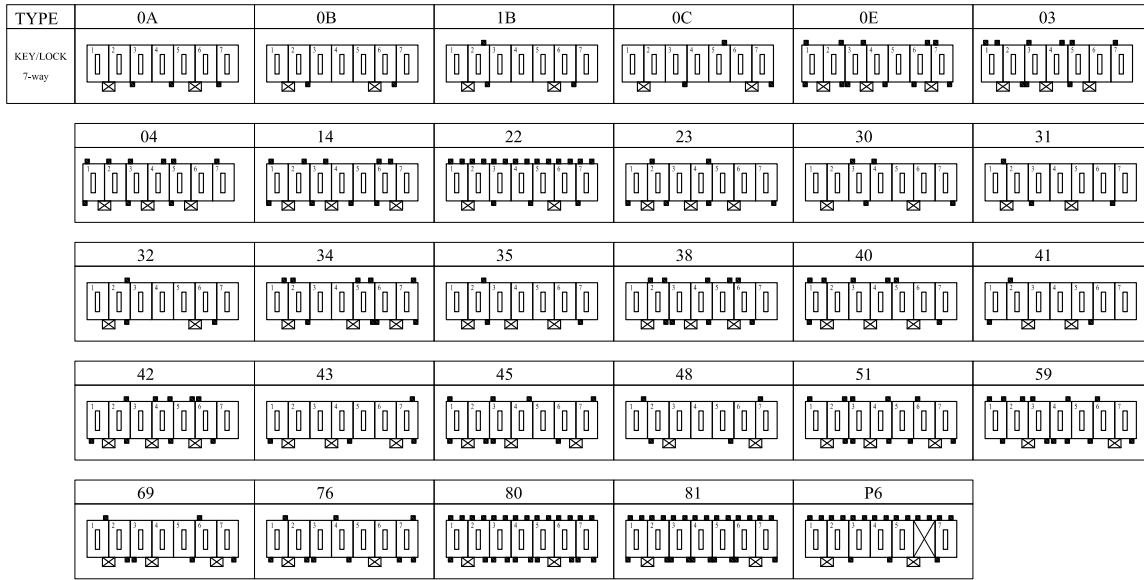
RoHS COMPLIANT



F	ES101253			 <small>www.allconnectors.eu   info@allconnectors.eu          Tel. +49 (0)711 / 358 110 20   Fax +49 (0)711 / 358 110 25</small> <b>GENERAL TOLERANCES:          (UNLESS SPECIFIED)</b>	APPROVED:	PART NO.:			
E	ES101238				DATE:	5011P**V***			
D	ES100717				CHECKED:	TITLE:			
C	ES060306				DATE:	Wafer			
A	DWG REL				DRAWN:	DRAWING NO.:			
REV.	ECO. NO.	CHG.	APP.		DATE:	501102S			
				 ANGULAR ± ( 1° )	 UNITS mm / inch	SCALE	SIZE	SHEET	REV.
						1:1	A4	3/5	F

\* See from top side

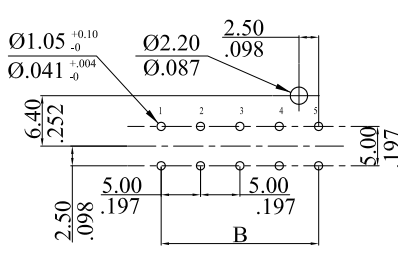
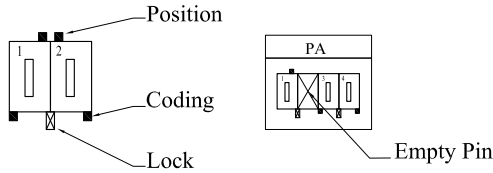
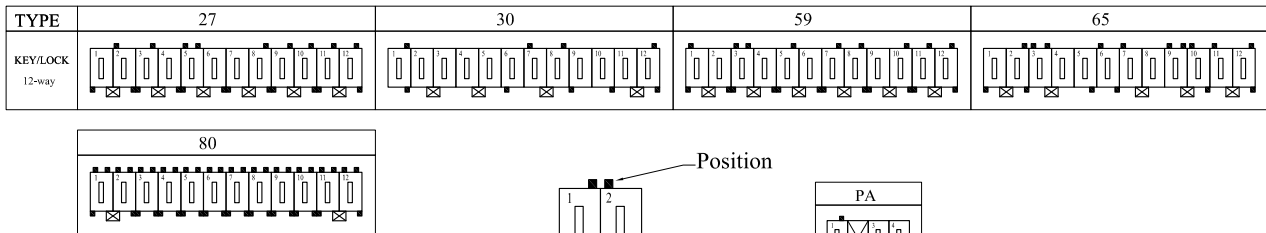
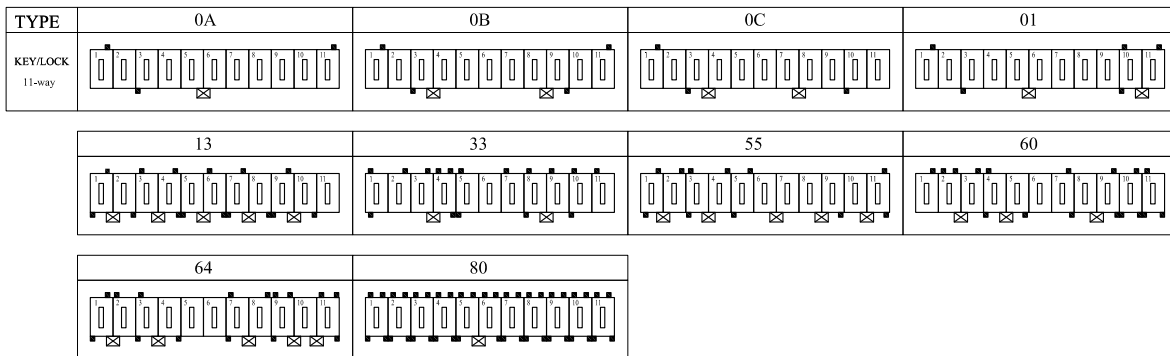
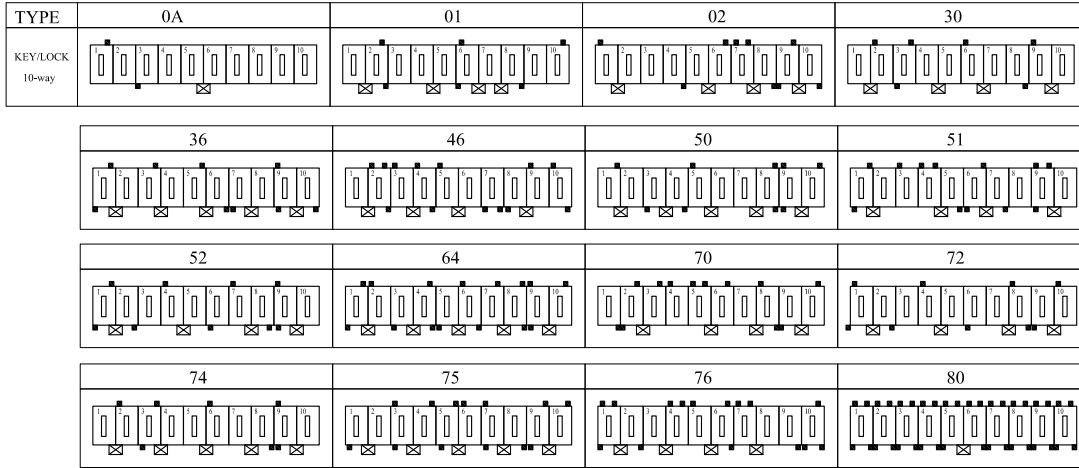
RoHS COMPLIANT



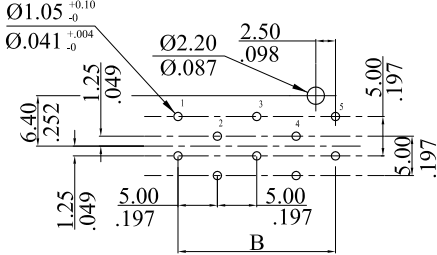
F	ES101253			 www.allconnectors.eu   info@allconnectors.eu Tel. +49 (0)711 / 358 110 20   Fax +49 (0)711 / 358 110 25	APPROVED:	PART NO.:				
E	ES101238				DATE:	5011P**V***				
D	ES100717				CHECKED:	TITLE:				
C	ES060306				DATE:	Wafer				
A	DWG REL			DRAWN:	DRAWING NO.:					
REV.	ECO. NO.	CHG.	APP.		DATE:	501102S				
						UNITS	SCALE	SIZE	SHEET	REV.
						mm inch	1:1	A4	4/5	F
					ANGULAR ± ( 1° )					

\* See from top side

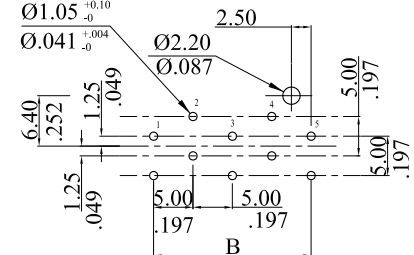
RoHS COMPLIANT



PCB layout for 5011P\*\*VT(S)\*\*



PCB layout for 5011P\*\*VX(M)\*\*



PCB special layout for 5011P\*\*VV(W)\*\*

F	ES101253			<p>www.allconnectors.eu   info@allconnectors.eu Tel. +49 (0)711 / 358 110 20   Fax +49 (0)711 / 358 110 25</p>	APPROVED:	PART NO.:						
E	ES101238				GENERAL TOLERANCES: (UNLESS SPECIFIED)	DATE:	5011P**V***					
D	ES100717				mm	inch	CHECKED:	TITLE:				
C	ES060306				1 PLACES	± 0.30	± --	DATE:	Wafer			
A	DWG REL			2 PLACES	± 0.20	± .012	DRAWN:	DRAWING NO.:				
REV.	ECO. NO.	CHG.	APP.	3 PLACES	± 0.10	± .008	DATE:	501102S				
				4 PLACES	± --	± .004		UNITS	SCALE	SIZE	SHEET	REV.
				ANGULAR ± ( 1° )		mm		1:1	A4	5/5	F	