

Note:

1. Material: Insulator: PA66+30% G/F UL94V-0  
Terminal: Copper alloy

2. Contact:

5011TCBTH\*\*:

Tin Plated 120 u" over Ni 30 u" min

5011TCBSH\*\* :

Silver Plated 80~120 u" over Ni 30 u" min

Ordering Information:

5011P  $\frac{**}{1}$   $\frac{H}{2}$   $\frac{**}{3}$   $\frac{**}{4}$

1. No. of circuits

2. Type:

H=Normal type R=Reverse type

3. Terminal:

T=Assemble terminal 5011TCBTHC\*

L=Assemble terminal 5011TCBTHD\*

J=Assemble terminal 5011TCBTHC\*

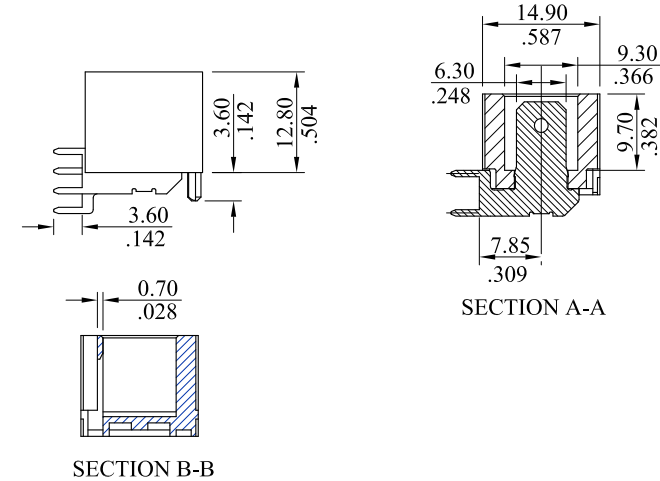
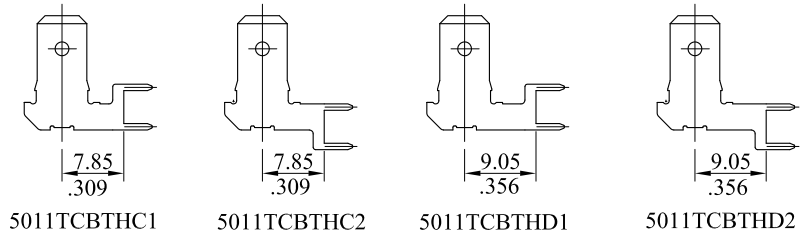
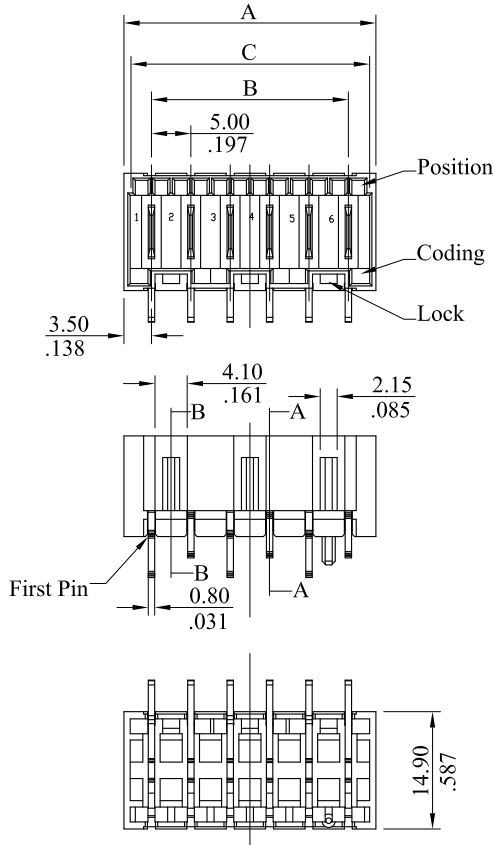
With special layout

G=Assemble terminal 5011TCBTHD\*

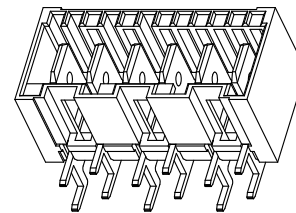
With special layout

4. See the Table of next page.

RoHS COMPLIANT



12	62.0(2.441)	55.0(2.165)	60.2(2.370)
11	57.0(2.244)	50.0(1.969)	55.2(2.173)
10	52.0(2.047)	45.0(1.712)	50.2(1.975)
9	47.0(1.850)	40.0(1.575)	45.2(1.780)
8	42.0(1.654)	35.0(1.378)	40.2(1.583)
7	37.0(1.457)	30.0(1.181)	35.2(1.386)
6	32.0(1.260)	25.0(.984)	30.2(1.189)
5	27.0(1.063)	20.0(.787)	25.2(.992)
4	22.0(.886)	15.0(.591)	20.2(.795)
3	17.0(.669)	10.0(.394)	15.2(.598)
2	12.0(.472)	5.0(.197)	10.2(.402)
CIRCUITS	DIM.A	DIM.B	DIM.C



NORMAL

G	ES101253			<p>www.allconnectors.eu   info@allconnectors.eu Tel. +49 (0)711 / 358 110 20   Fax +49 (0)711 / 358 110 25</p>	APPROVED:	PART NO.:																		
F	ES101238				DATE:	5011P*****																		
E	ES100901			<p>GENERAL TOLERANCES: (UNLESS SPECIFIED)</p> <table border="1"> <tr> <td></td> <td>mm</td> <td>inch</td> </tr> <tr> <td>1 PLACE</td> <td>± 0.30</td> <td>± --</td> </tr> <tr> <td>2 PLACES</td> <td>± 0.20</td> <td>± .012</td> </tr> <tr> <td>3 PLACES</td> <td>± 0.10</td> <td>± .008</td> </tr> <tr> <td>4 PLACES</td> <td>± --</td> <td>± .004</td> </tr> </table>		mm	inch	1 PLACE	± 0.30	± --	2 PLACES	± 0.20	± .012	3 PLACES	± 0.10	± .008	4 PLACES	± --	± .004	CHECKED:	TITLE:			
	mm	inch																						
1 PLACE	± 0.30	± --																						
2 PLACES	± 0.20	± .012																						
3 PLACES	± 0.10	± .008																						
4 PLACES	± --	± .004																						
D	ES100717			DATE:	Wafer																			
A	DWG REL			DRAWN:	DRAWING NO.:																			
REV.	ECO. NO.	CHG.	APP.	DATE:	501103S																			
				ANGULAR ± ( 1° )		UNITS	SCALE	SIZE	SHEET	REV.														
					<table border="1"> <tr> <td>mm</td> <td>inch</td> </tr> <tr> <td>1:1</td> <td>A4</td> </tr> <tr> <td>1/7</td> <td>G</td> </tr> </table>	mm	inch	1:1	A4	1/7	G													
mm	inch																							
1:1	A4																							
1/7	G																							

Note:

- Material: Insulator: PA66+30% G/F UL94V-0  
Terminal: Copper alloy
- Contact:  
5011TCBTH\*\*:  
Tin Plated 120 u" over Ni 30 u" min  
5011TCBSH\*\* :  
Silver Plated 80~120 u" over Ni 30 u" min

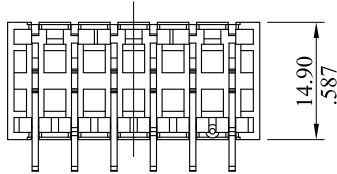
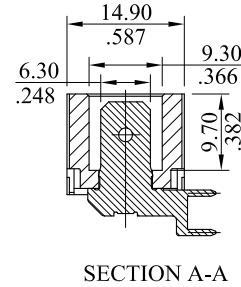
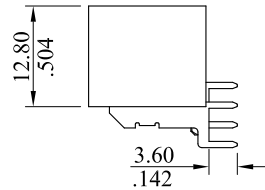
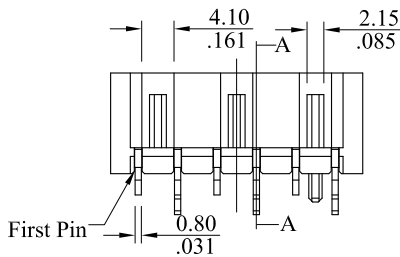
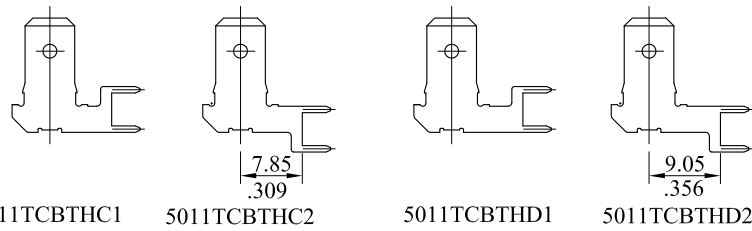
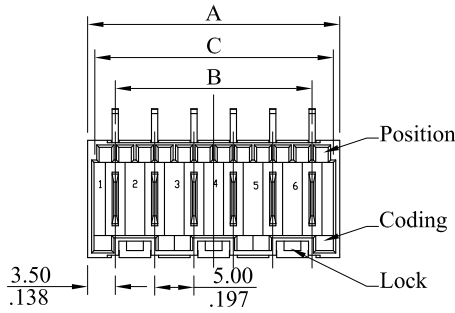
Ordering Information:

5011P  $\frac{**}{1}$   $\frac{R}{2}$   $\frac{***}{3}$   $\frac{***}{4}$

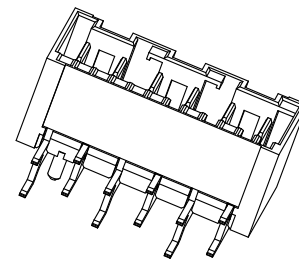
RoHS COMPLIANT

- No. of circuits
- Type:  
H=Normal type R=Reverse type
- Terminal:  
T=Assemble terminal 5011TCBTHC\*  
L=Assemble terminal 5011TCBTHD\*  
J=Assemble terminal 5011TCBTHC\*  
With special layout  
G=Assemble terminal 5011TCBTHD\*  
With special layout
- See the Table of next page.

- C=Assemble terminal 5011TCBSHC\*  
D=Assemble terminal 5011TCBSHD\*  
K=Assemble terminal 5011TCBSHC\*  
With special layout  
Z=Assemble terminal 5011TCBSHD\*  
With special layout



12	62.0(2.441)	55.0(2.165)	60.2(2.370)
11	57.0(2.244)	50.0(1.969)	55.2(2.173)
10	52.0(2.047)	45.0(1.712)	50.2(1.975)
9	47.0(1.850)	40.0(1.575)	45.2(1.780)
8	42.0(1.654)	35.0(1.378)	40.2(1.583)
7	37.0(1.457)	30.0(1.181)	35.2(1.386)
6	32.0(1.260)	25.0(.984)	30.2(1.189)
5	27.0(1.063)	20.0(.787)	25.2(.992)
4	22.0(.886)	15.0(.591)	20.2(.795)
3	17.0(.669)	10.0(.394)	15.2(.598)
2	12.0(.472)	5.0(.197)	10.2(.402)
CIRCUITS	DIM.A	DIM.B	DIM.C



REVERSE

G	ES101253			 www.allconnectors.eu   info@allconnectors.eu Tel. +49 (0)711 / 358 110 20   Fax +49 (0)711 / 358 110 25	APPROVED:	PART NO.:					
F	ES101238				GENERAL TOLERANCES: (UNLESS SPECIFIED)	DATE:	5011P*****				
E	ES100901				CHECKED:	TITLE:	Wafer				
D	ES100717				DATE:	DRAWING NO.:	501103S				
A	DWG REL				DRAWN:						
REV.	ECO. NO.	CHG.	APP.		DATE:						
					 ANGULAR ± ( 1° )	 UNITS mm inch	SCALE	SIZE	SHEET	REV.	
						1:1	A4	2/7	G		

\* See from top side

RoHS COMPLIANT

TYPE	0A	0B	0C	0D	0E	0F	0G	0H	0I	0K	0L	0M	0N
KEY/LOCK 2-way													

0P	0Q	0R	0S	0T	0U	0X	0Z	09	10	11	48	80	86

TYPE	0A	0B	0C	0D	0E	0F	0G	0H	0I	0K	0L
KEY/LOCK 3-way											

0M	0N	0Q	0W	02	03	04	05	10	12	13

1A	2N	2P	32	38	40	44	53	65	80	81

98

TYPE	0A	0B	0C	0D	0E	0F	0G	0H	0I
KEY/LOCK 4-way									

0J	0K	0L	0M	0W	01	02	03	04

05	06	17	19	37	43	63	65	80

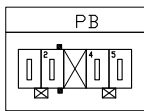
81	82	84	86	GA(Green)	PA	PB

G	ES101253			 www.allconnectors.eu   info@allconnectors.eu Tel. +49 (0)711 / 358 110 20   Fax +49 (0)711 / 358 110 25 GENERAL TOLERANCES: (UNLESS SPECIFIED)	APPROVED:	PART NO.:				
F	ES101238				DATE:	5011P*****				
E	ES100901				CHECKED:	TITLE:				
D	ES100717				DATE:	Wafer				
A	DWG REL				DRAWN:	DRAWING NO.:				
REV.	ECO. NO.	CHG.	APP.		DATE:	501103S				
				mm	inch	UNITS	SCALE	SIZE	SHEET	REV.
ANGULAR ± ( 1° )						mm inch	1:1	A4	3/7	G

\* See from top side

RoHS COMPLIANT

TYPE	0A	0B	0C	0D	0E	0F	0G	0I
KEY/LDCK 5-way								
	03	04	05	06	07	08	09	11
	12	13	14	17	18	20	21	22
	23	24	25	26	27	28	29	30
	31	32	33	34	35	36	43	49
	50	51	64	69	73	80	81	82
	83	84	85	86	87	88	B3<Blue>	B4<Blue>



TYPE	0A	0B	0C	0D	0E	0I
KEY/LDCK 6-way						
	04	06	14	15	21	29
	30	50	51	73	80	81

E	G	ES101253		 www.allconnectors.eu   info@allconnectors.eu Tel. +49 (0)711 / 358 110 20   Fax +49 (0)711 / 358 110 25	APPROVED:	PART NO.:				
	F	ES101238			DATE:	5011P*****				
	E	ES100901			GENERAL TOLERANCES: (UNLESS SPECIFIED)	CHECKED:	TITLE:			
	D	ES100717				DATE:	Wafer			
	A	DWG REL				DRAWN:	DRAWING NO.:			
	REV.	ECO. NO.	CHG.		APP.	DATE:	501103S			
				 ANGULAR ± ( 1° )	UNITS mm / inch	SCALE	SIZE	SHEET	REV.	
						1:1	A4	4/7	G	

\* See from top side

RoHS COMPLIANT

TYPE	0A	0B	1B	0C	0E	03
KEY/LDCK 7-way						
	04	14	22	23	30	31
	32	34	35	38	40	41
	42	43	45	48	51	59
	69	76	80	81	P6	

TYPE	0A	0C	0D	08	10	21
KEY/LDCK 8-way						
	30	33	41	44	45	46
	48	49	57	58	62	63
	77	80	81			

TYPE	0A	0B	0C	0D	08
KEY/LDCK 9-way					
	31	42	43	48	49
	52	53	57	58	
	80	81			

G	ES101253			 www.allconnectors.eu   info@allconnectors.eu Tel. +49 (0)711 / 358 110 20   Fax +49 (0)711 / 358 110 25	APPROVED:	PART NO.:																		
	F	ES101238				DATE:	5011P*****																	
E	ES100901			GENERAL TOLERANCES: (UNLESS SPECIFIED)	CHECKED:	TITLE:																		
D	ES100717				DATE:	Wafer																		
A	DWG REL			<table border="1"> <thead> <tr> <th></th> <th>mm</th> <th>inch</th> </tr> </thead> <tbody> <tr> <td>1 PLACE</td> <td>± 0.30</td> <td>± --</td> </tr> <tr> <td>2 PLACES</td> <td>± 0.20</td> <td>± .012</td> </tr> <tr> <td>3 PLACES</td> <td>± 0.10</td> <td>± .008</td> </tr> <tr> <td>4 PLACES</td> <td>± --</td> <td>± .004</td> </tr> </tbody> </table>		mm	inch	1 PLACE	± 0.30	± --	2 PLACES	± 0.20	± .012	3 PLACES	± 0.10	± .008	4 PLACES	± --	± .004	DRAWN:	DRAWING NO.:			
		mm	inch																					
1 PLACE	± 0.30	± --																						
2 PLACES	± 0.20	± .012																						
3 PLACES	± 0.10	± .008																						
4 PLACES	± --	± .004																						
REV.	ECO. NO.	CHG.	APP.	DATE:	501103S																			
						UNITS	SCALE	SIZE	SHEET	REV.														
						mm inch	1:1	A4	5/7	G														

\* See from top side

RoHS COMPLIANT

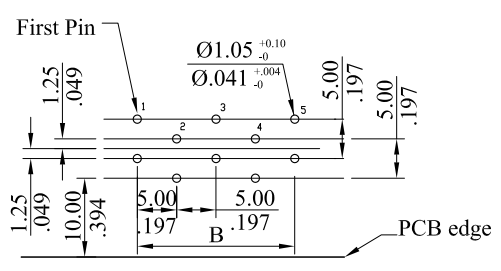
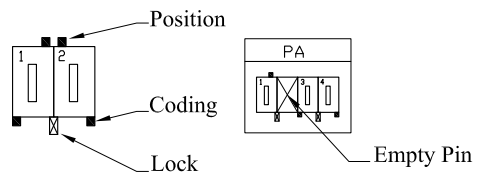
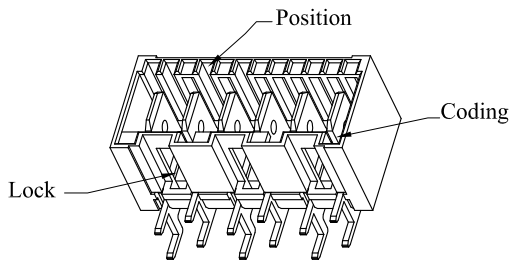
TYPE	0A	01	02	30
KEY/LOCK 10-way				
	36	46	50	51
	52	64	70	72
	74	75	76	80

TYPE	0A	0B	0C	01
KEY/LOCK 11-way				
	13	33	55	60
	64	80		

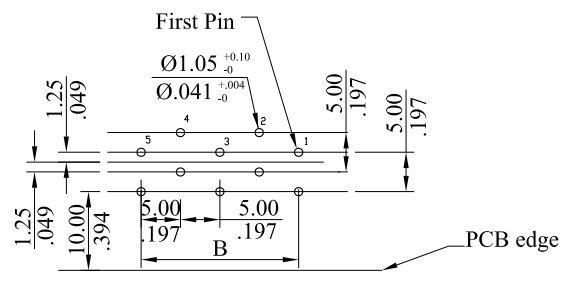
TYPE	27	30	59	65
KEY/LOCK 12-way				
	80			

E	G	ES101253		 www.allconnectors.eu   info@allconnectors.eu Tel. +49 (0)711 / 358 110 20   Fax +49 (0)711 / 358 110 25	APPROVED:	PART NO.:				
	F	ES101238			DATE:	5011P*****				
	E	ES100901			GENERAL TOLERANCES: (UNLESS SPECIFIED)	CHECKED:	TITLE:			
	D	ES100717				DATE:	Wafer			
	A	DWG REL				DRAWN:	DRAWING NO.:			
REV.	ECO. NO.	CHG.	APP.		DATE:	501103S				
					 UNITS mm / inch	SCALE	SIZE	SHEET	REV.	
				ANGULAR ± ( 1° )		1:1	A4	6/7	G	

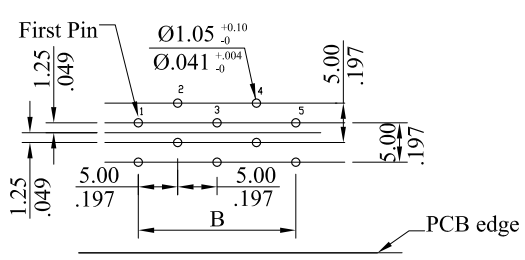
RoHS COMPLIANT



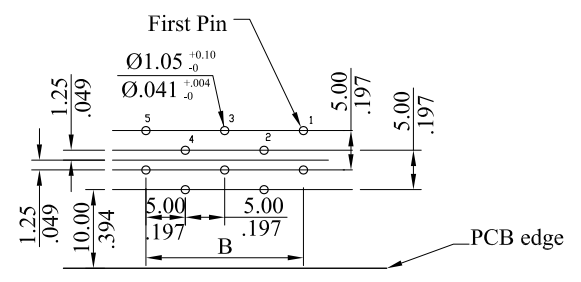
PCB layout for normal  
(5011P\*\*HT\*\*/5011P\*\*HL\*\*)



PCB layout for reverse  
(5011P\*\*RT\*\*/5011P\*\*RL\*\*)



PCB special layout for normal  
(5011P\*\*HJ\*\*/5011P\*\*HG\*\*)



PCB special layout for reverse  
(5011P\*\*RJ\*\*/5011P\*\*RG\*\*)

G	ES101253			 www.allconnectors.eu   info@allconnectors.eu Tel. +49 (0)711 / 358 110 20   Fax +49 (0)711 / 358 110 25	APPROVED:	PART NO.:				
F	ES101238				GENERAL TOLERANCES: (UNLESS SPECIFIED)	DATE:	5011P*****			
E	ES100901					CHECKED:	TITLE:			
D	ES100717					DATE:	Wafer			
A	DWG REL				DRAWN:	DRAWING NO.:				
REV.	ECO. NO.	CHG.	APP.		DATE:	501103S				
						UNITS	SCALE	SIZE	SHEET	REV.
						mm inch	1:1	A4	7/7	G
					ANGULAR ± ( ° )					