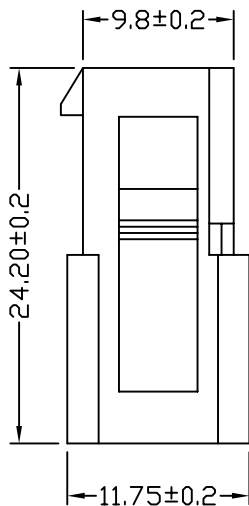
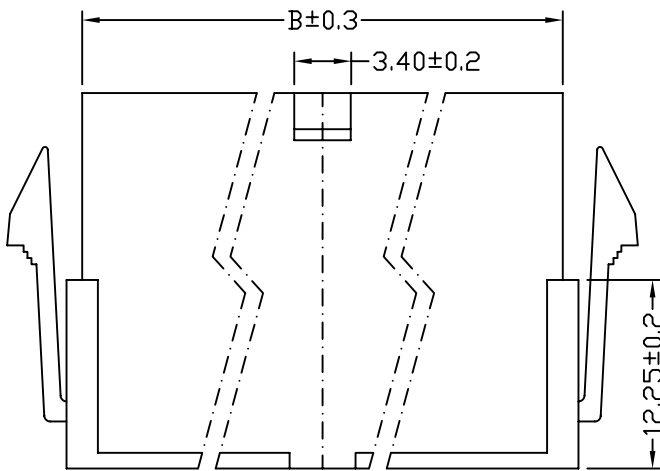
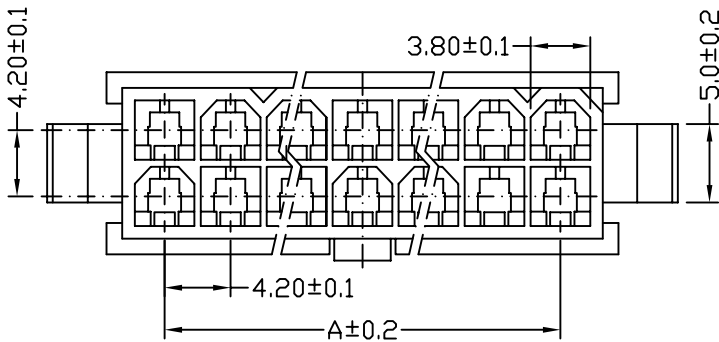


**■ SPECIFICATIONS**

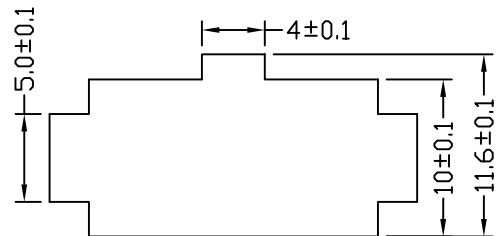
- Voltage rating: 600V AC, DC
- Current rating: 9A, AC, DC
- Withstanding Voltage: 1500V AC/minute
- Insulation resistance: 1000MΩmin
- Temperature range: -40° C~+105° C
- Contact resistance: Intial value/10mΩmax
- After enviornmental testing/20mΩmax

**■ HOUSING**

- Part No.: MF-9358E-2\*XX
- Poles: 2-24
- Material: Nylon 66 UL94V-2
- Q'ty: 1000pcs/bag



Poles	Part No	Dimensions (mm)	
		A	B
02	9358E-2*01	--	5.60
04	9358E-2*02	4.20	9.80
06	9358E-2*03	8.40	14.00
08	9358E-2*04	12.60	18.20
10	9358E-2*05	16.80	22.40
12	9358E-2*06	21.00	26.60
14	9358E-2*07	25.20	30.80
16	9358E-2*08	29.40	35.00
18	9358E-2*09	33.60	39.20
20	9358E-2*10	37.80	43.40
22	9358E-2*11	42.00	47.60
24	9358E-2*12	46.20	51.80



Recommad Mounting Dimension



www.allconnectors.eu | info@allconnectors.eu  
Tel. +49 (0)711 / 358 110 20 | Fax +49 (0)711 / 358 110 25

APPROVED BY	DATE	SCALE	TOLERANCE	
	2007/04/16	4:1	.0	±0.3
CHECKED BY	UNIT	VIEW	.00	±0.2
	mm		.000	±0.1
DRAWN BY	VER NO.	SIZE	ANGLE	
	D1	A4	.0	±
			.0	±
			A-010	

PART NO MF-9358E-2\*XX

4.2mm Crimp Style connectors