

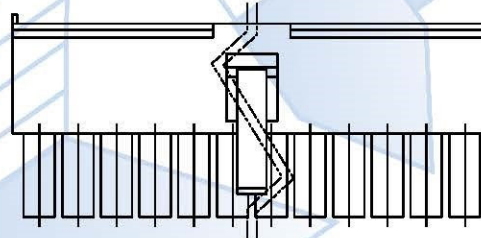
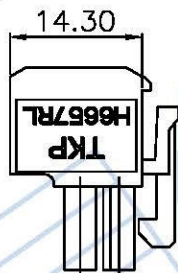
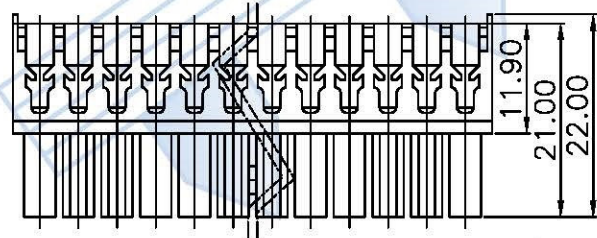
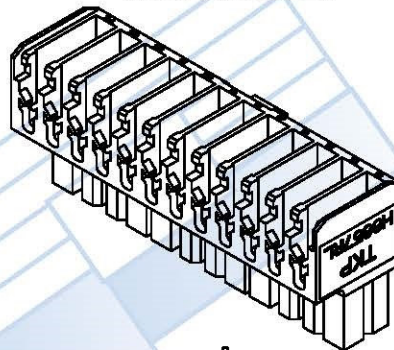
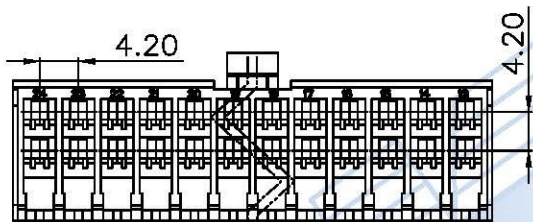
ROHS Compliant



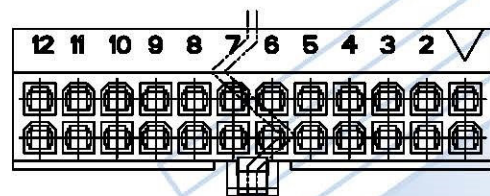
Allconnectors

www.allconnectors.de
Tel.: 0049 711 7009503
70794 Filderstadt - Germany

info@allconnectors.de
Fax: 0049 711 7009504
Kettnerstr. 25



- NOTE**
- * Material : Nylon UL 94V-2
 - * Color : Natural
 - * Electrical rating : C-UL 600V 6A, AC/DC
 - * Accepts 6657TPL(LF) short terminal . & 6657TPL-1(LF) long terminal .
 - * Mates with H6657P series plug housings or P6657I , P6657L series headers and P6658I , P6658L series headers
 - * Dual row , 2-36 circuits available



ENTWURF

Circuits	Part No.	Dim. A	Dim. B	Circuits	Part No.	Dim. A	Dim. B
2	H6657R1L-02	—	5.80	20	H6657R1L-20	37.80	43.60
4	H6657R1L-04	4.20	10.00	22	H6657R1L-22	42.00	47.80
6	H6657R1L-06	8.40	14.20	24	H6657R1L-24	46.20	52.00
8	H6657R1L-08	12.60	18.40	26	H6657R1L-26	50.40	56.20
10	H6657R1L-10	16.80	22.60	28	H6657R1L-28	54.60	60.40
12	H6657R1L-12	21.00	26.80	30	H6657R1L-30	58.80	64.60
14	H6657R1L-14	25.20	31.00	32	H6657R1L-32	63.00	68.80
16	H6657R1L-16	29.40	35.20	34	H6657R1L-34	67.20	73.00
18	H6657R1L-18	33.60	39.40	36	H6657R1L-36	71.40	77.20

PART NO.	H6657R1L-XX			Part NO.	Material	Color	Remark	APPROVAL
TITLE	4.20mm Wire to Wire					Natural		DRAWN:
THIRD ANGLE	SCALE	UNIT	SHEET NO	TOLERANCE	DATE	ODD NUMBERS	REV	CHECKED:
	1.25:1	mm	1/1	.X± 0.30 .XXX±0.10 .XX± 0.20 ANGLE±2'	2011.08.12	ENG950923	A2	APPROVED:
	420-071		C420-001					ENTWURF

CRUS
E118260